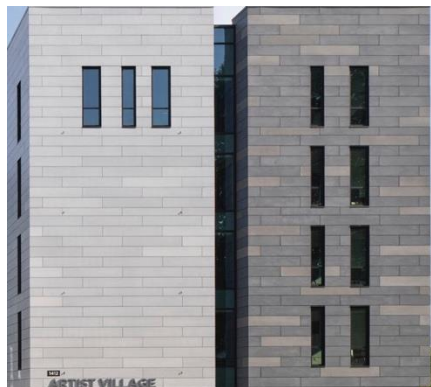


University of North Carolina School of the Arts - Winston-Salem, NC  
*A Fiber Cement Façade Designed to Patina Over Time*



Designed in collaboration with LS3P and Ayers Saint Gross, the building boasts a striking exterior clad in Swisspearl Patina fiber cement panels. Connecting two five-story wings via a bridge, this project harmonizes the university's vision of community, occupant well-being, and sustainable building systems.

The design team effectively leveraged the gentle, earthy grey hues of the Patina Original panels to deliver a visually captivating and unified facade, full of visual interest and able to 'patina' and evolve over time.

Panel Type: Swisspearl® PATINA Original

Architect: LS3P

888-826-8453

**CLADDING CORP**

THE 1<sup>ST</sup> NAME IN RAINSCREEN