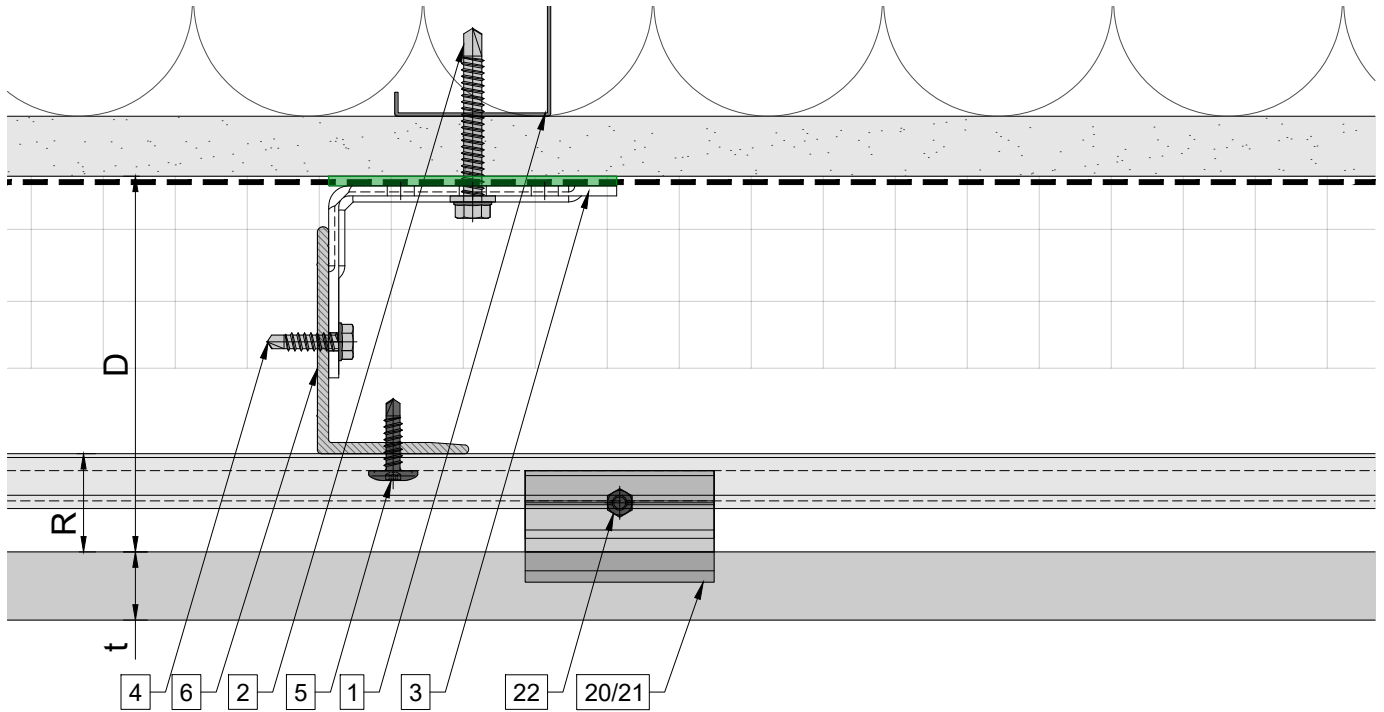


System depth



System depth

Bracket	nominal D System depth	min. D system depth	max. D system depth	R	t panel thickness
Sigma U.02	4 ¹ / ₈ "	3 ¹ / ₂ "	4 ³ / ₄ "	1"	varies
Sigma U.03	5"	4 ¹ / ₄ "	5 ³ / ₄ "	1"	varies
Sigma U.04	6"	5 ¹ / ₄ "	6 ³ / ₄ "	1"	varies
Sigma U.05	7"	6 ¹ / ₄ "	7 ³ / ₄ "	1"	varies
Sigma U.06	8"	7 ¹ / ₄ "	8 ³ / ₄ "	1"	varies
Sigma U.07	9"	8 ¹ / ₄ "	9 ³ / ₄ "	1"	varies
Sigma U.08	10"	9 ¹ / ₄ "	10 ³ / ₄ "	1"	varies
Sigma U.09	11"	10 ¹ / ₄ "	11 ³ / ₄ "	1"	varies
Sigma U.10	12"	11 ¹ / ₄ "	12 ³ / ₄ "	1"	varies
Sigma U.11	13"	12 ¹ / ₄ "	13 ³ / ₄ "	1"	varies
Sigma U.12	14"	13 ¹ / ₄ "	14 ³ / ₄ "	1"	varies

Legend

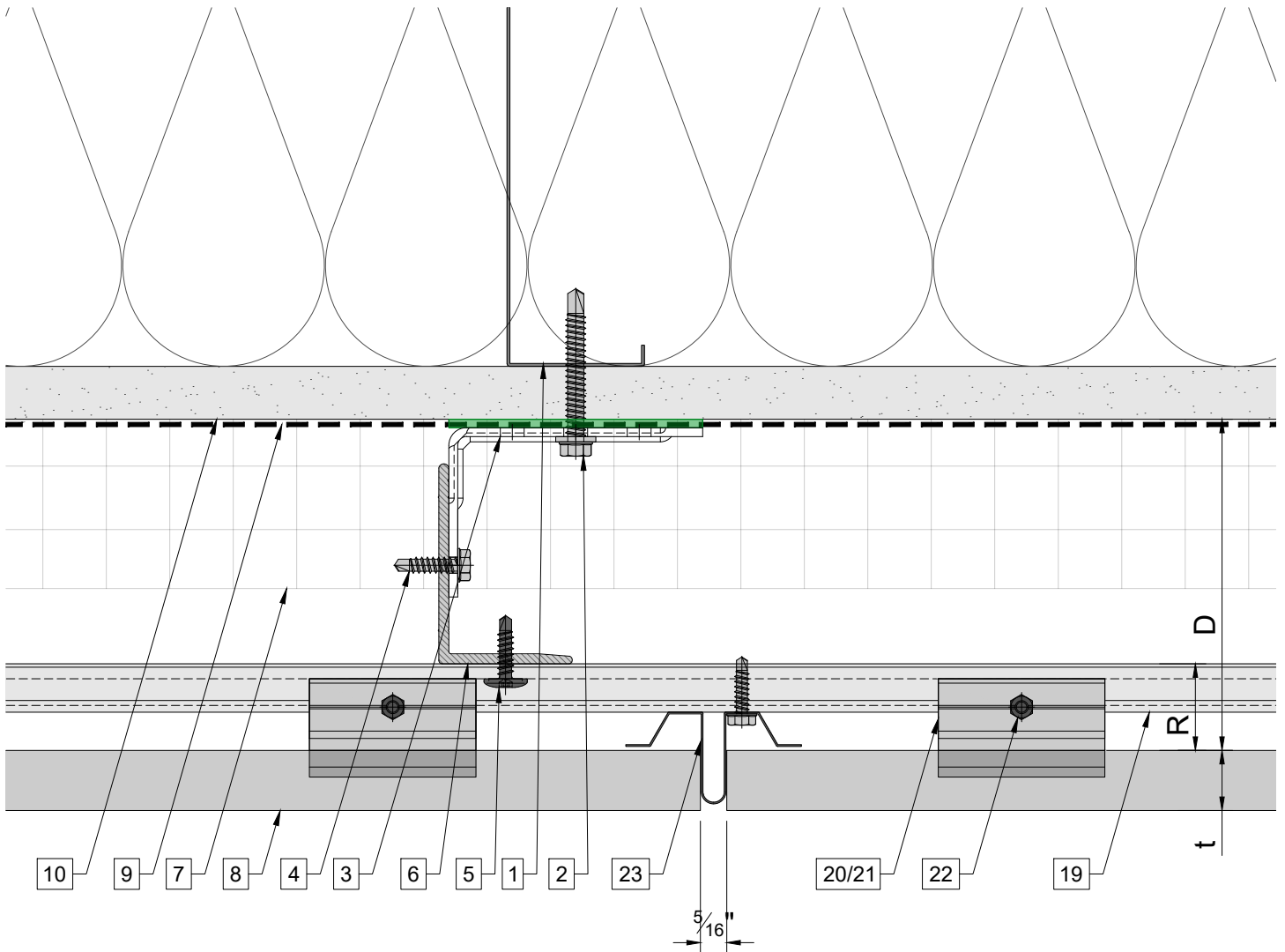
1. Steel stud (16 GA typical) (NBEC)
2. Perimeter anchor (NBEC)
3. Sigma wall bracket
4. st/st self-drilling screw $\frac{3}{16} \times \frac{3}{4}$ "
5. #12x1 TEKSELECT screw
6. Vertical L-profile
7. Insulation (NBEC)
8. Terracotta panel
9. A/V barrier (NBEC)

10. Exterior wall (NBEC)
11. Outer corner closure 1 (NBEC)
12. Outer corner closure 2 (NBEC)
13. Jamb closure (NBEC)
14. Horizontal L-profile
15. Coping (NBEC)
16. Perforated window head closure (NBEC)

17. Window sill (NBEC)
18. Perforated base closure (NBEC)
19. Carrier rail
20. Hanger, adjustable
21. Hanger, non-adjustable
22. S/S adjustment screw
23. Vertical joint closure

D - System depth
 t - Panel thickness
 R - Carrier rail and Hanger
 * Ventilation will vary based on insulation depth.
 ** Minimum ventilation requirement should be qualified by panel manufacturer.
 *** One of adjustable hangers per panel to be fixed with structural silicone
 **** (NBEC) - Not by Eco Cladding.

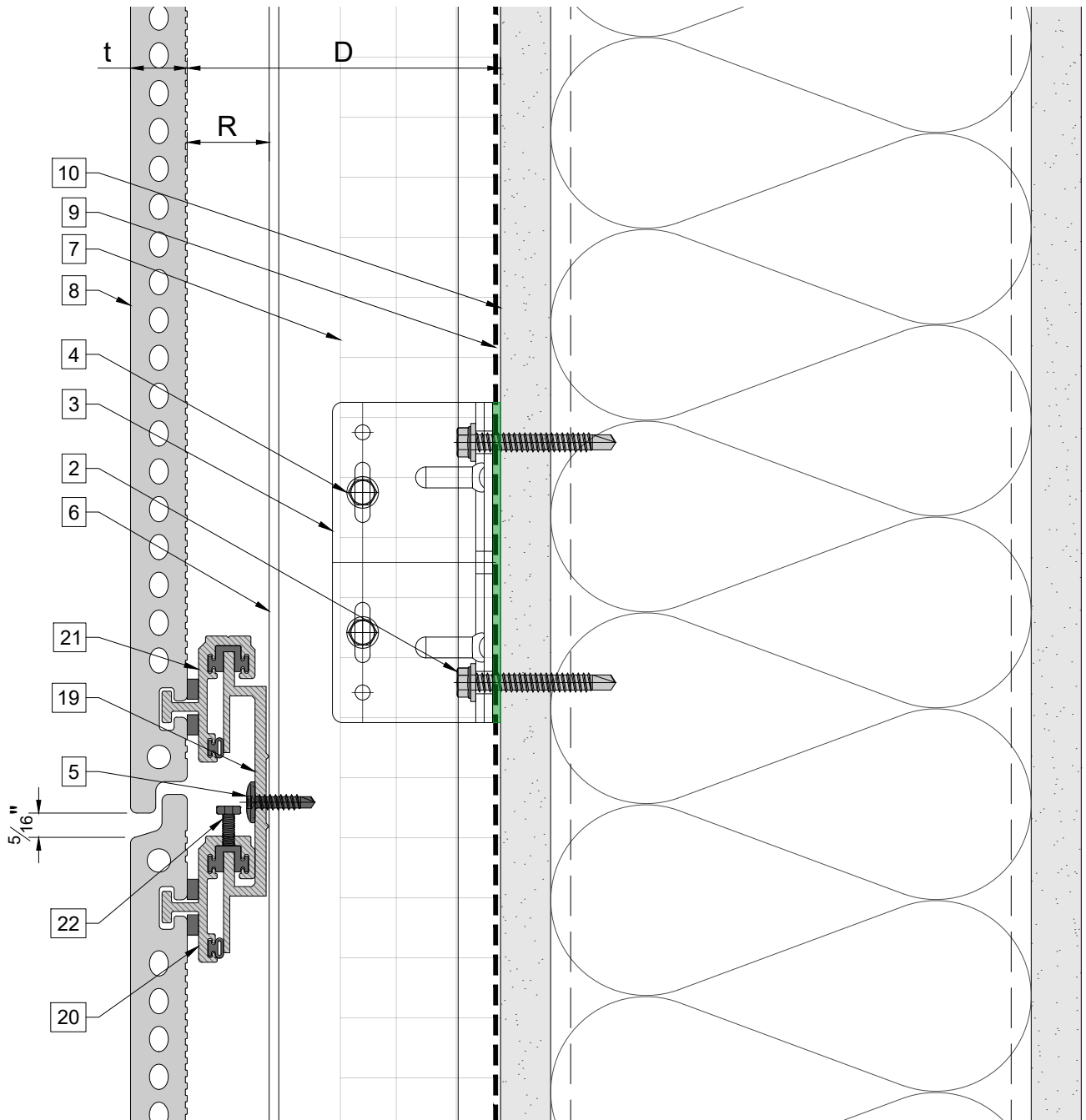
Vertical joint



Legend

1. Steel stud (16 GA typical) (NBEC)	10. Exterior wall (NBEC)	17. Window sill (NBEC)	D - System depth t - Panel thickness R - Carrier rail and Hanger * Ventilation will vary based on insulation depth. ** Minimum ventilation requirement should be qualified by panel manufacturer. *** One of adjustable hangers per panel to be fixed with structural silicone **** (NBEC) - Not by Eco Cladding.
2. Perimeter anchor (NBEC)	11. Outer corner closure 1 (NBEC)	18. Perforated base closure (NBEC)	
3. Sigma wall bracket	12. Outer corner closure 2 (NBEC)	19. Carrier rail	
4. st/st self-drilling screw $\frac{3}{16}'' \times \frac{3}{4}''$	13. Jamb closure (NBEC)	20. Hanger, adjustable	
5. #12x1 TEKSELECT screw	14. Horizontal L-profile	21. Hanger, non-adjustable	
6. Vertical L-profile	15. Coping (NBEC)	22. S/S adjustment screw	
7. Insulation (NBEC)	16. Perforated window head closure (NBEC)	23. Vertical joint closure	
8. Terracotta panel			
9. A/V barrier (NBEC)			

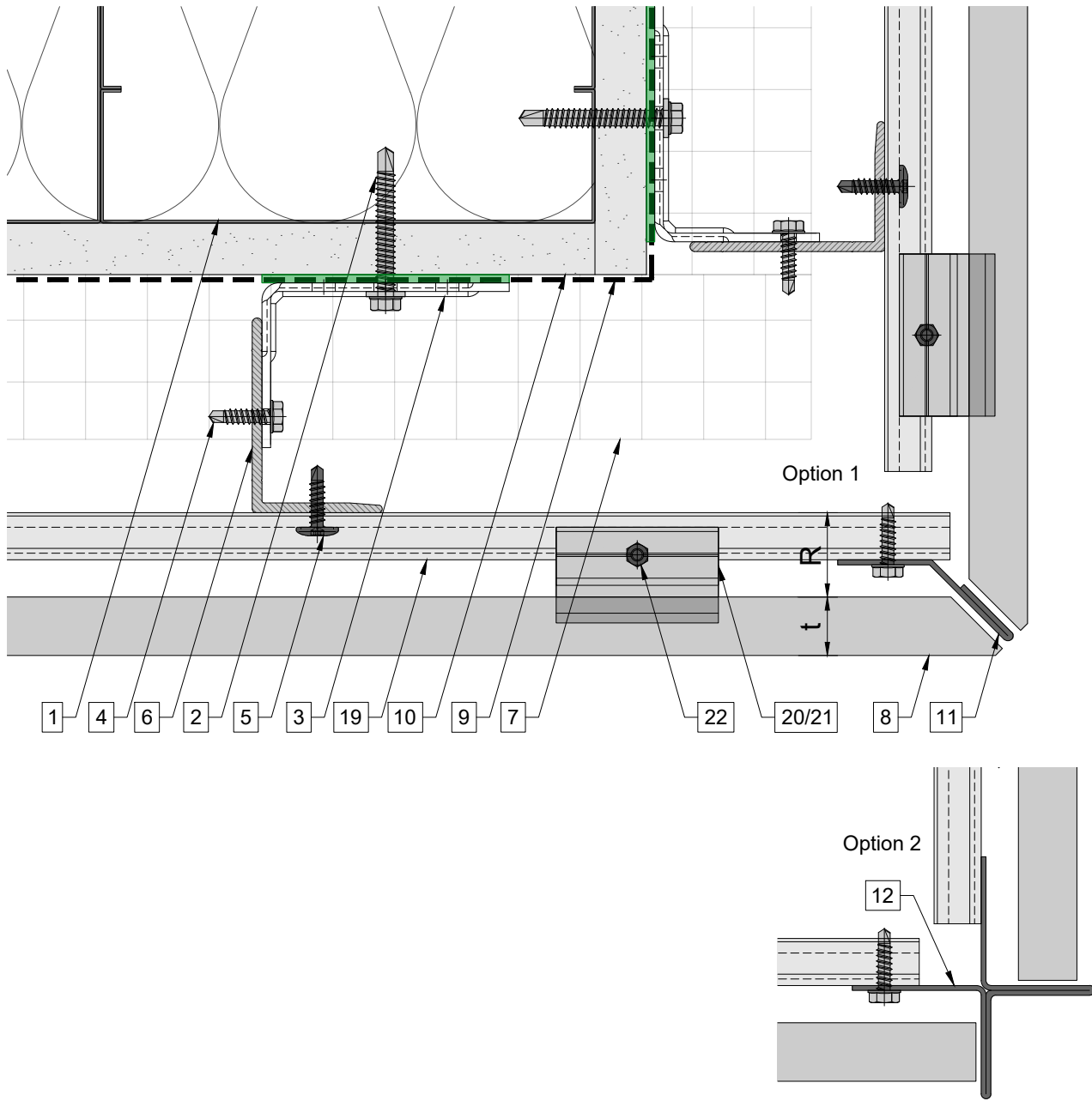
Horizontal joint



Legend

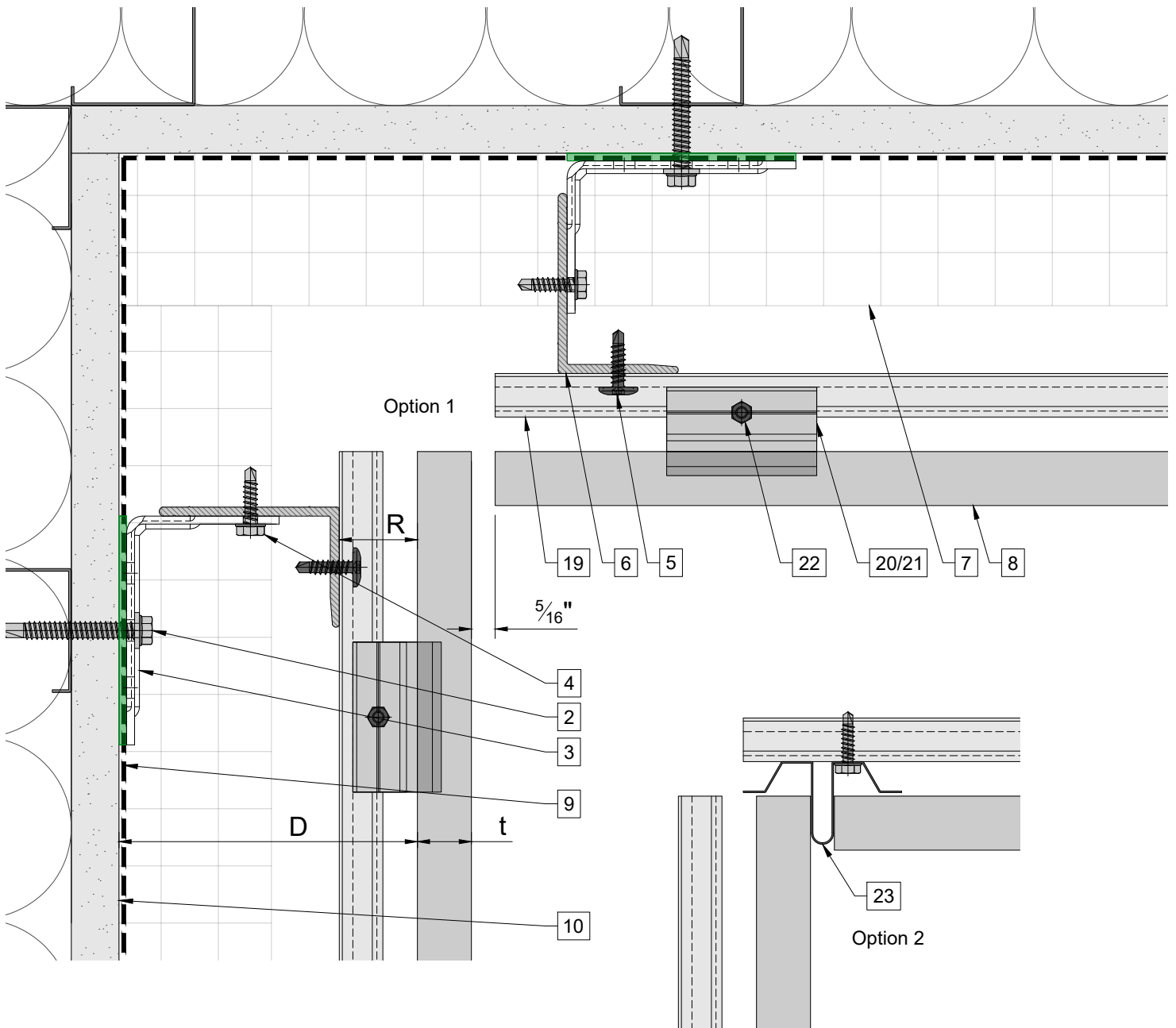
1. Steel stud (16 GA typical) (NBEC)	10. Exterior wall (NBEC)	17. Window sill (NBEC)	D - System depth t - Panel thickness R - Carrier rail and Hanger * Ventilation will vary based on insulation depth. ** Minimum ventilation requirement should be qualified by panel manufacturer. *** One of adjustable hangers per panel to be fixed with structural silicone **** (NBEC) - Not by Eco Cladding.
2. Perimeter anchor (NBEC)	11. Outer corner closure 1 (NBEC)	18. Perforated base closure (NBEC)	
3. Sigma wall bracket	12. Outer corner closure 2 (NBEC)	19. Carrier rail	
4. st/st self-drilling screw $\frac{3}{16} \times \frac{3}{4}$ "	13. Jamb closure (NBEC)	20. Hanger, adjustable	
5. #12x1 TEKSELECT screw	14. Horizontal L-profile	21. Hanger, non-adjustable	
6. Vertical L-profile	15. Coping (NBEC)	22. S/S adjustment screw	
7. Insulation (NBEC)	16. Perforated window head closure (NBEC)	23. Vertical joint closure	
8. Terracotta panel			
9. A/V barrier (NBEC)			

Outer corner



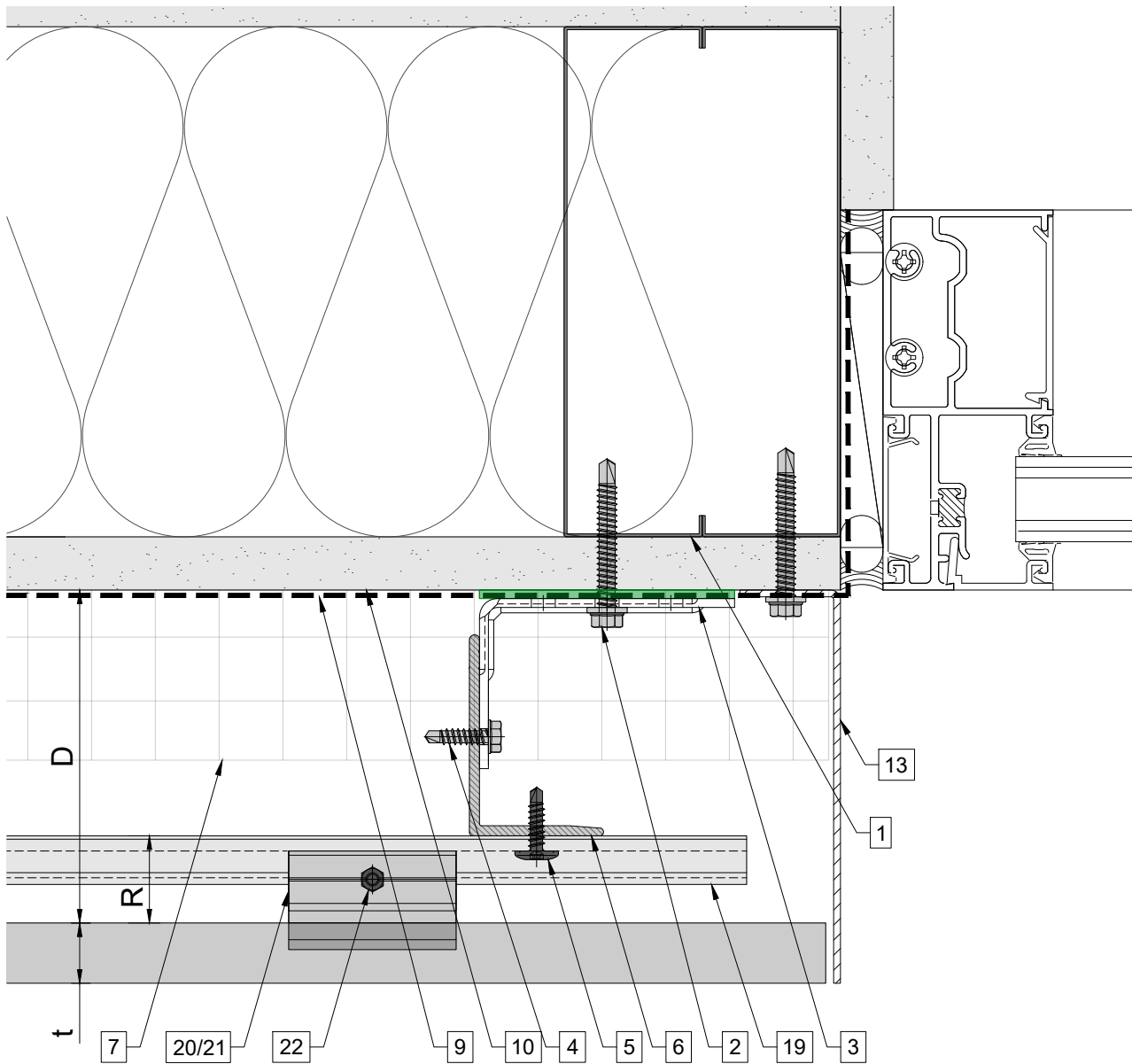
Legend

1. Steel stud (16 GA typical) (NBEC)	10. Exterior wall (NBEC)	17. Window sill (NBEC)	D - System depth t - Panel thickness R - Carrier rail and Hanger * Ventilation will vary based on insulation depth. ** Minimum ventilation requirement should be qualified by panel manufacturer. *** One of adjustable hangers per panel to be fixed with structural silicone **** (NBEC) - Not by Eco Cladding.
2. Perimeter anchor (NBEC)	11. Outer corner closure 1 (NBEC)	18. Perforated base closure (NBEC)	
3. Sigma wall bracket	12. Outer corner closure 2 (NBEC)	19. Carrier rail	
4. st/st self-drilling screw $\frac{3}{16} \times \frac{3}{4}$ "	13. Jamb closure (NBEC)	20. Hanger, adjustable	
5. #12x1 TEKSELECT screw	14. Horizontal L-profile	21. Hanger, non-adjustable	
6. Vertical L-profile	15. Coping (NBEC)	22. S/S adjustment screw	
7. Insulation (NBEC)	16. Perforated window head closure (NBEC)	23. Vertical joint closure	



Legend			
1. Steel stud (16 GA typical) (NBEC)	10. Exterior wall (NBEC)	17. Window sill (NBEC)	D - System depth t - Panel thickness R - Carrier rail and Hanger * Ventilation will vary based on insulation depth. ** Minimum ventilation requirement should be qualified by panel manufacturer. *** One of adjustable hangers per panel to be fixed with structural silicone **** (NBEC) - Not by Eco Cladding.
2. Perimeter anchor (NBEC)	11. Outer corner closure 1 (NBEC)	18. Perforated base closure (NBEC)	
3. Sigma wall bracket	12. Outer corner closure 2 (NBEC)	19. Carrier rail	
4. st/st self-drilling screw $\frac{3}{16}'' \times \frac{3}{4}''$	13. Jamb closure (NBEC)	20. Hanger, adjustable	
5. #12x1 TEKSELECT screw	14. Horizontal L-profile	21. Hanger, non-adjustable	
6. Vertical L-profile	15. Coping (NBEC)	22. S/S adjustment screw	
7. Insulation (NBEC)	16. Perforated window head closure (NBEC)	23. Vertical joint closure	
8. Terracotta panel			
9. A/V barrier (NBEC)			

Window jamb (option 1)



Legend

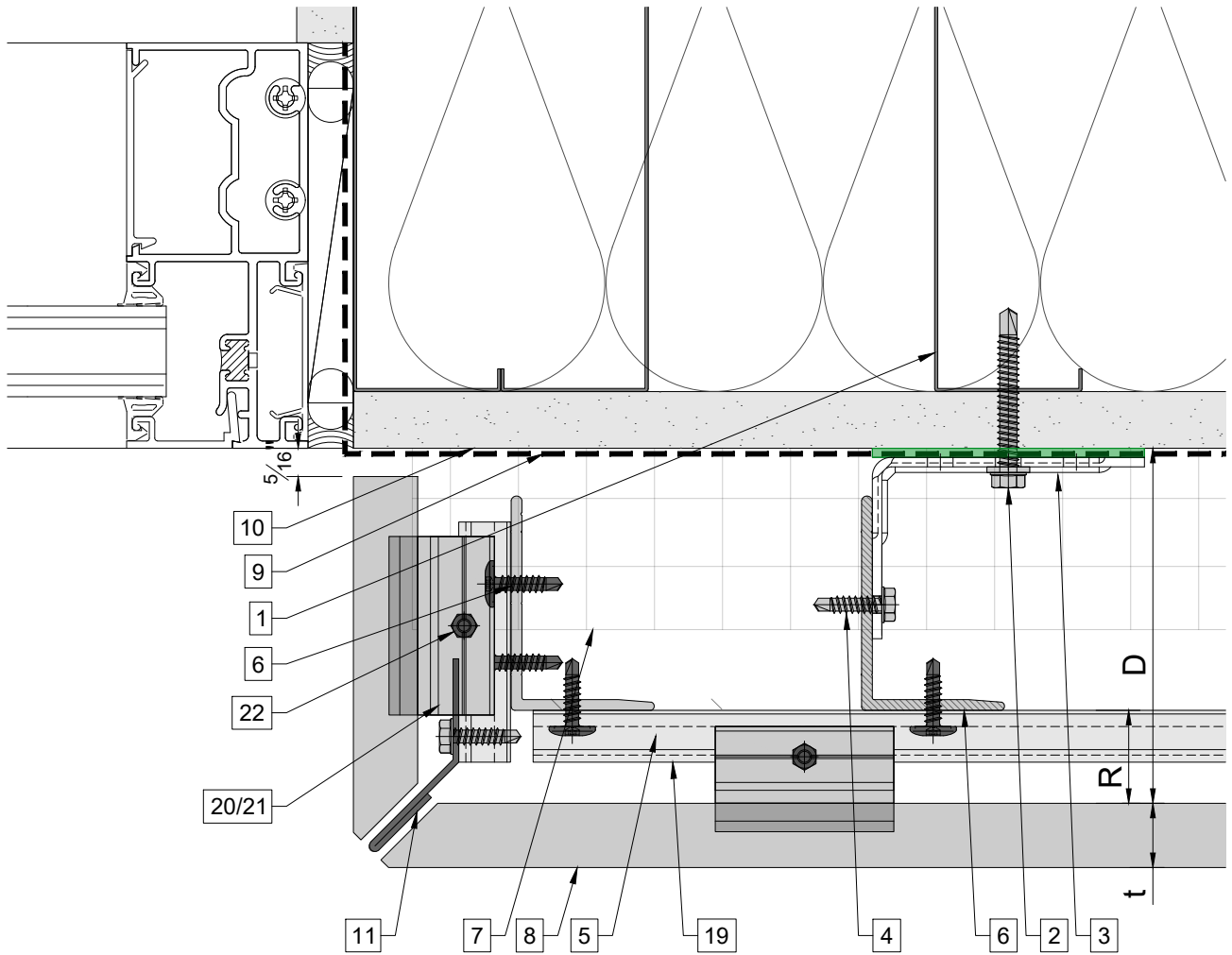
1. Steel stud (16 GA typical) (NBEC)
2. Perimeter anchor (NBEC)
3. Sigma wall bracket
4. st/st self-drilling screw $\frac{3}{16}'' \times \frac{3}{4}''$
5. #12x1 TEKSELECT screw
6. Vertical L-profile
7. Insulation (NBEC)
8. Terracotta panel
9. A/V barrier (NBEC)

10. Exterior wall (NBEC)
11. Outer corner closure 1 (NBEC)
12. Outer corner closure 2 (NBEC)
13. Jamb closure (NBEC)
14. Horizontal L-profile
15. Coping (NBEC)
16. Perforated window head closure (NBEC)

17. Window sill (NBEC)
18. Perforated base closure (NBEC)
19. Carrier rail
20. Hanger, adjustable
21. Hanger, non-adjustable
22. S/S adjustment screw
23. Vertical joint closure

D - System depth
 t - Panel thickness
 R - Carrier rail and Hanger
 * Ventilation will vary based on insulation depth.
 ** Minimum ventilation requirement should be qualified by panel manufacturer.
 *** One of adjustable hangers per panel to be fixed with structural silicone
 **** (NBEC) - Not by Eco Cladding.

Window jamb (option 2)



Legend

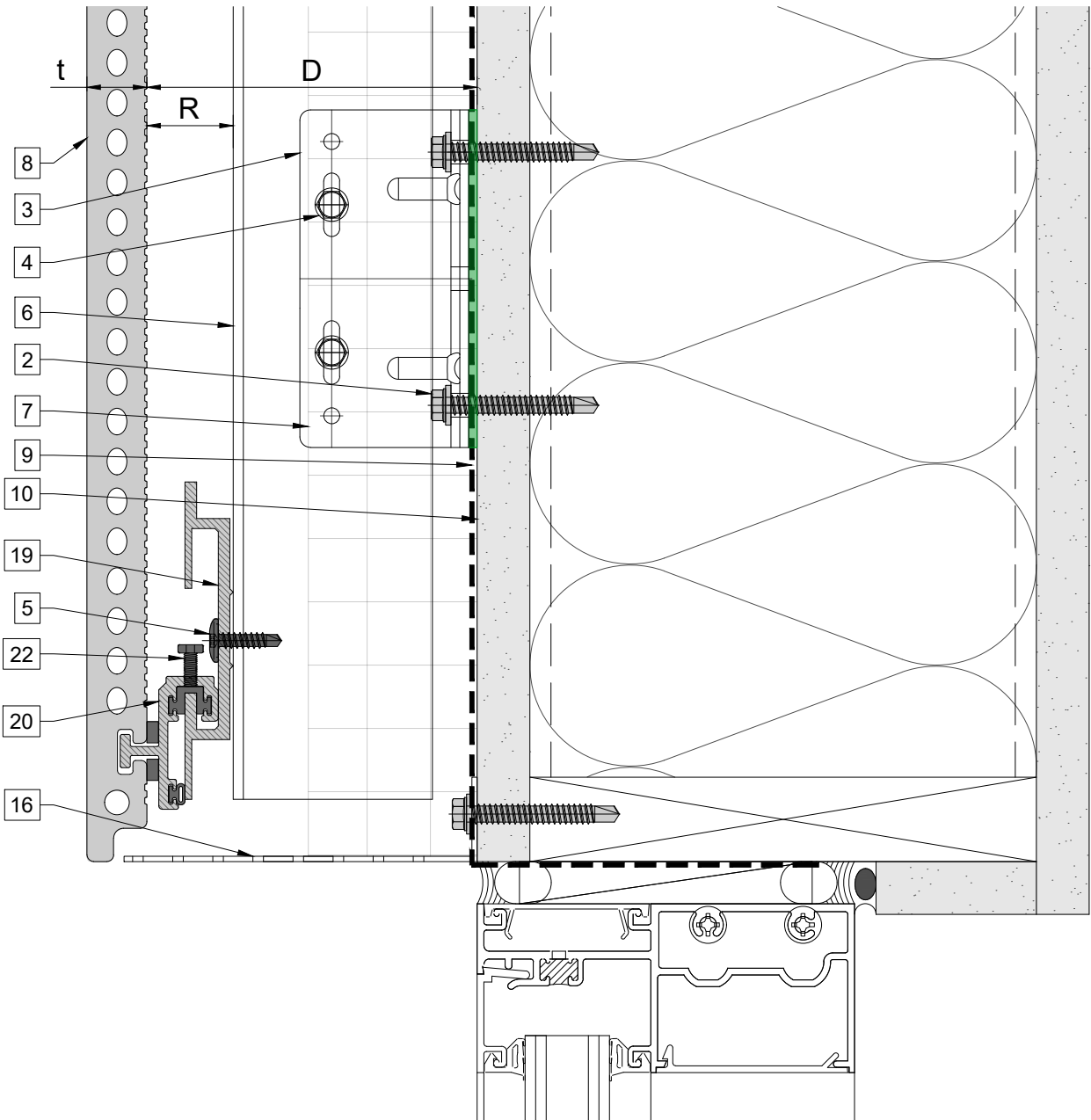
- 1. Steel stud (16 GA typical) (NBEC)
- 2. Perimeter anchor (NBEC)
- 3. Sigma wall bracket
- 4. st/st self-drilling screw $\frac{3}{16} \times \frac{3}{4}$ "
- 5. #12x1 TEKSELECT screw
- 6. Vertical L-profile
- 7. Insulation (NBEC)
- 8. Terracotta panel
- 9. A/V barrier (NBEC)

- 10. Exterior wall (NBEC)
- 11. Outer corner closure 1 (NBEC)
- 12. Outer corner closure 2 (NBEC)
- 13. Jamb closure (NBEC)
- 14. Horizontal L-profile
- 15. Coping (NBEC)
- 16. Perforated window head closure (NBEC)

- 17. Window sill (NBEC)
- 18. Perforated base closure (NBEC)
- 19. Carrier rail
- 20. Hanger, adjustable
- 21. Hanger, non-adjustable
- 22. S/S adjustment screw
- 23. Vertical joint closure

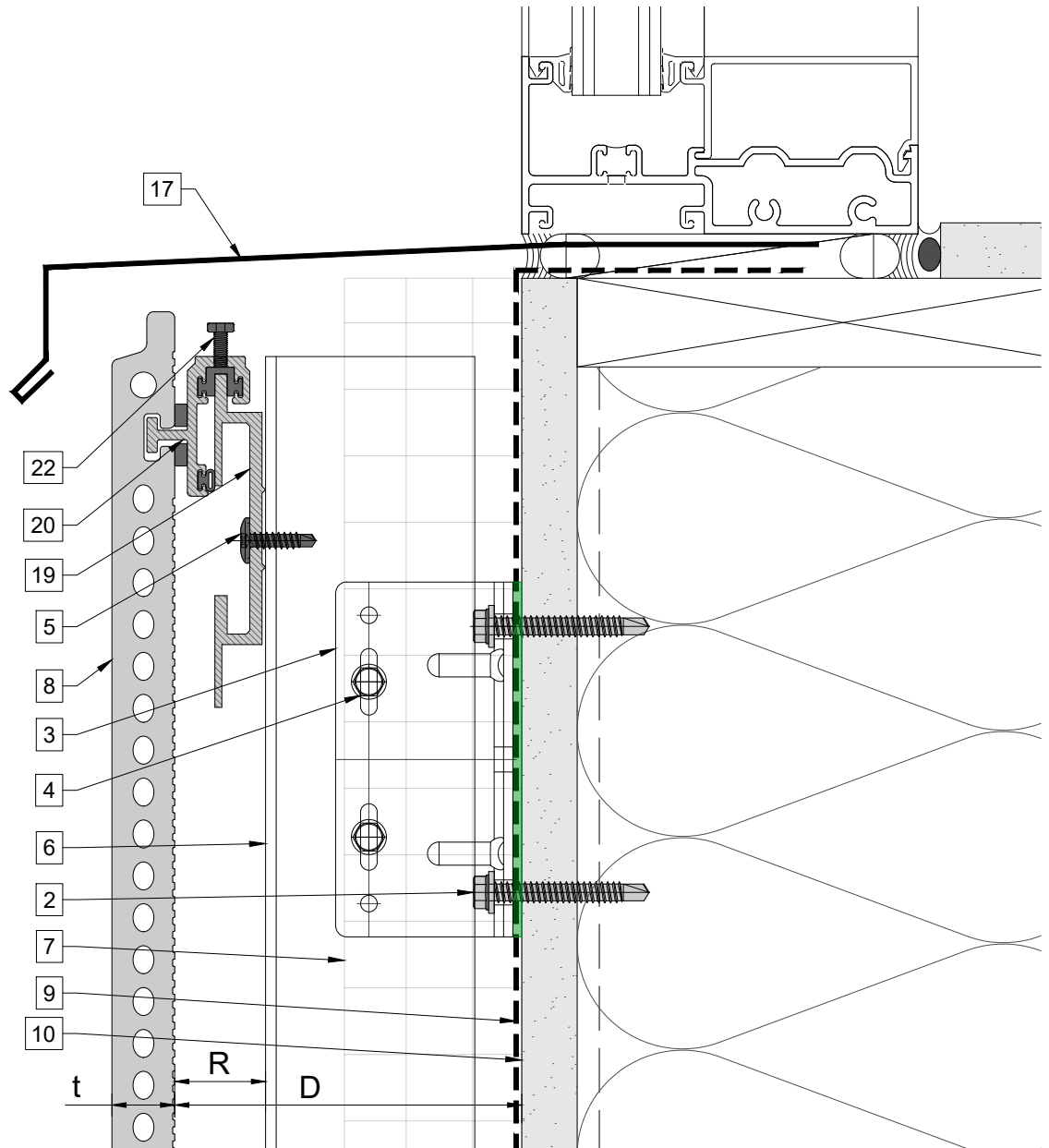
D - System depth
 t - Panel thickness
 R - Carrier rail and Hanger
 * Ventilation will vary based on insulation depth.
 ** Minimum ventilation requirement should be qualified by panel manufacturer.
 *** One of adjustable hangers per panel to be fixed with structural silicone
 **** (NBEC) - Not by Eco Cladding.

Window head (option 1)



Legend

1. Steel stud (16 GA typical) (NBEC)	10. Exterior wall (NBEC)	17. Window sill (NBEC)	D - System depth t - Panel thickness R - Carrier rail and Hanger * Ventilation will vary based on insulation depth. ** Minimum ventilation requirement should be qualified by panel manufacturer. *** One of adjustable hangers per panel to be fixed with structural silicone **** (NBEC) - Not by Eco Cladding.
2. Perimeter anchor (NBEC)	11. Outer corner closure 1 (NBEC)	18. Perforated base closure (NBEC)	
3. Sigma wall bracket	12. Outer corner closure 2 (NBEC)	19. Carrier rail	
4. st/st self-drilling screw $\frac{3}{16} \times \frac{3}{4}$ "	13. Jamb closure (NBEC)	20. Hanger, adjustable	
5. #12x1 TEKSELECT screw	14. Horizontal L-profile	21. Hanger, non-adjustable	
6. Vertical L-profile	15. Coping (NBEC)	22. S/S adjustment screw	
7. Insulation (NBEC)	16. Perforated window head closure (NBEC)	23. Vertical joint closure	



Legend

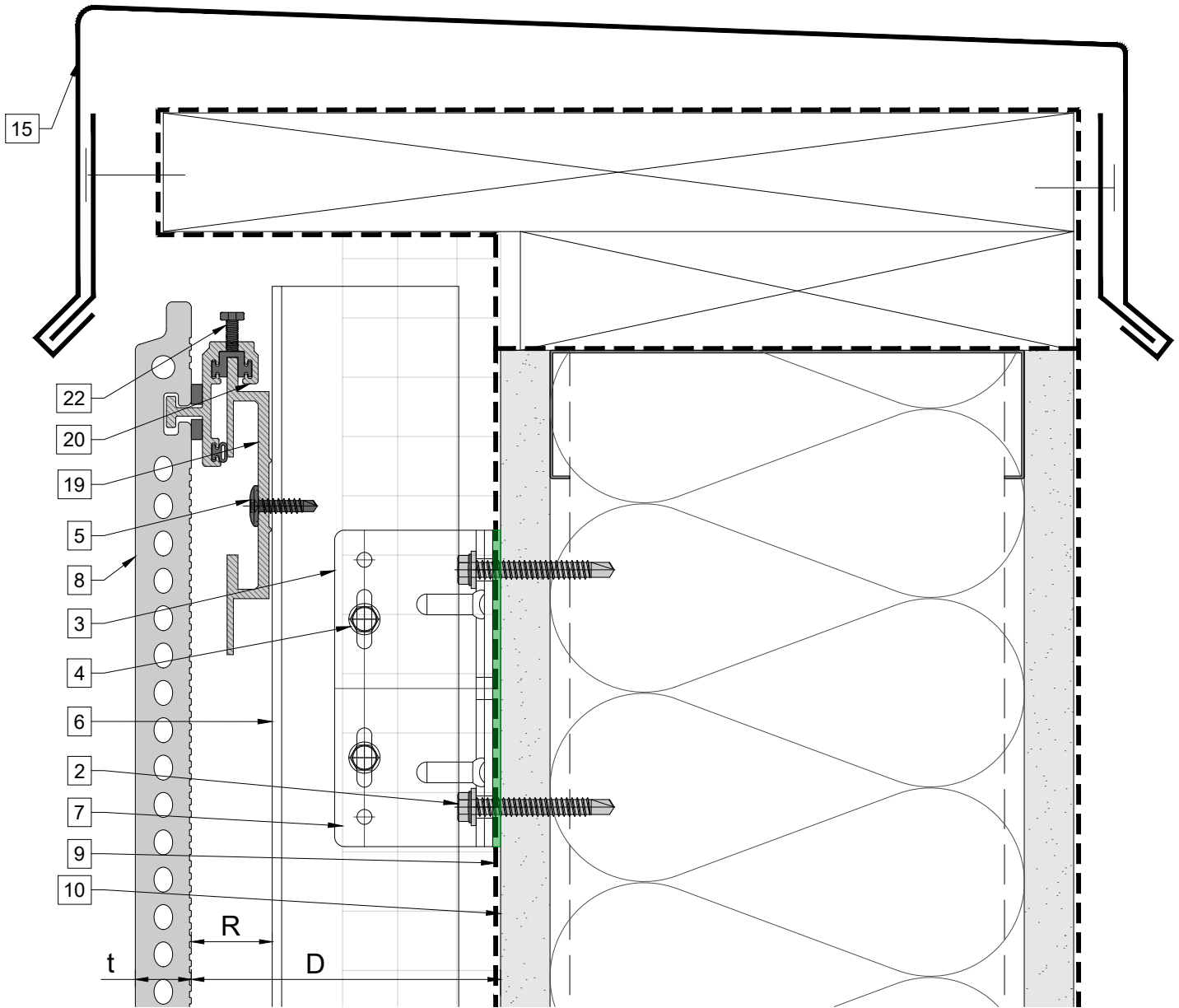
- 1. Steel stud (16 GA typical) (NBEC)
- 2. Perimeter anchor (NBEC)
- 3. Sigma wall bracket
- 4. st/st self-drilling screw $\frac{3}{16}'' \times \frac{3}{4}''$
- 5. #12x1 TEKSELECT screw
- 6. Vertical L-profile
- 7. Insulation (NBEC)
- 8. Terracotta panel
- 9. A/V barrier (NBEC)

- 10. Exterior wall (NBEC)
- 11. Outer corner closure 1 (NBEC)
- 12. Outer corner closure 2 (NBEC)
- 13. Jamb closure (NBEC)
- 14. Horizontal L-profile
- 15. Coping (NBEC)
- 16. Perforated window head closure (NBEC)

- 17. Window sill (NBEC)
- 18. Perforated base closure (NBEC)
- 19. Carrier rail
- 20. Hanger, adjustable
- 21. Hanger, non-adjustable
- 22. S/S adjustment screw
- 23. Vertical joint closure

D - System depth
 t - Panel thickness
 R - Carrier rail and Hanger
 * Ventilation will vary based on insulation depth.
 ** Minimum ventilation requirement should be qualified by panel manufacturer.
 *** One of adjustable hangers per panel to be fixed with structural silicone
 **** (NBEC) - Not by Eco Cladding.

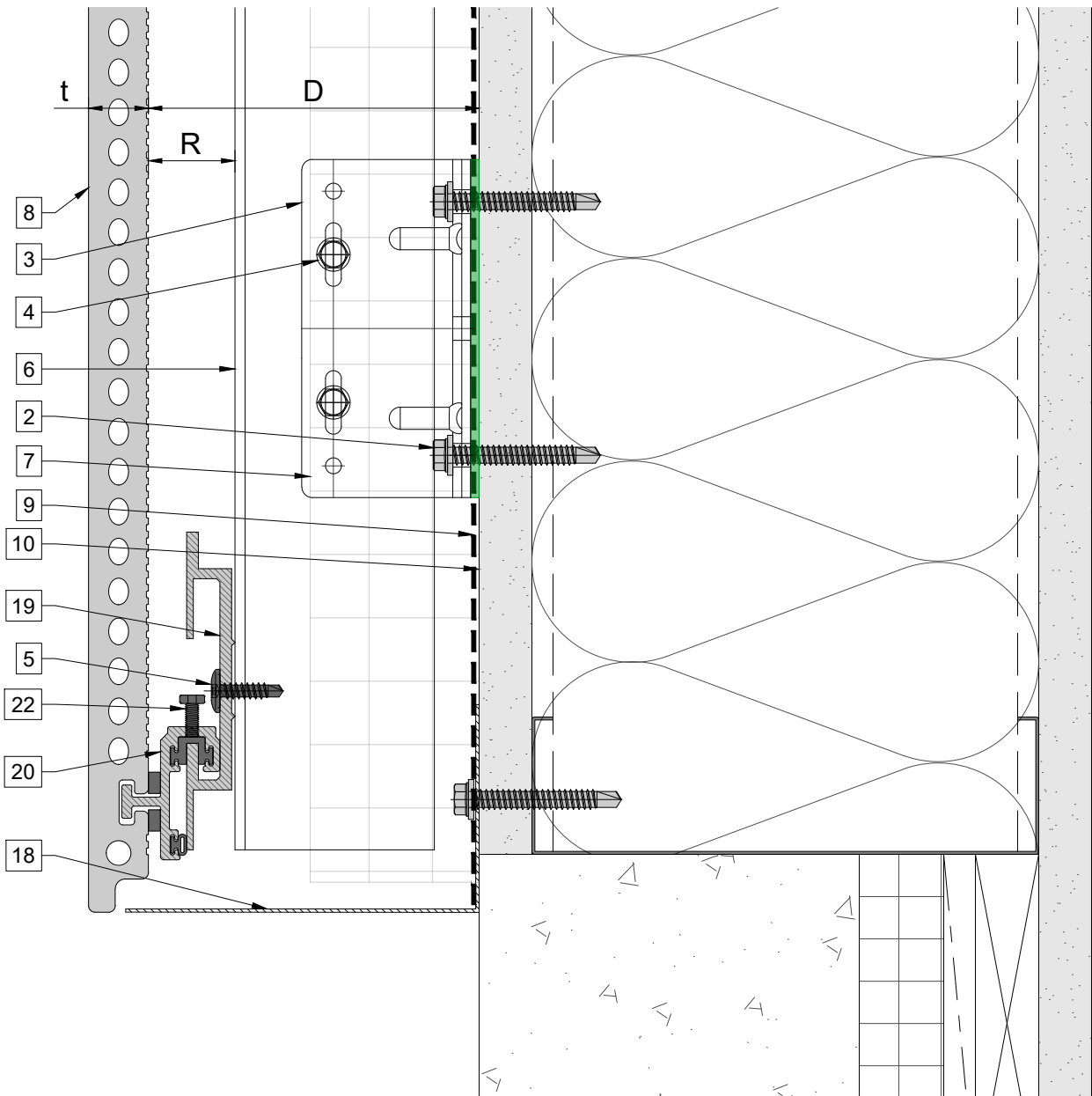
Coping detail



Legend

1. Steel stud (16 GA typical) (NBEC)	10. Exterior wall (NBEC)	17. Window sill (NBEC)	D - System depth t - Panel thickness R - Carrier rail and Hanger * Ventilation will vary based on insulation depth. ** Minimum ventilation requirement should be qualified by panel manufacturer. *** One of adjustable hangers per panel to be fixed with structural silicone **** (NBEC) - Not by Eco Cladding.
2. Perimeter anchor (NBEC)	11. Outer corner closure 1 (NBEC)	18. Perforated base closure (NBEC)	
3. Sigma wall bracket	12. Outer corner closure 2 (NBEC)	19. Carrier rail	
4. st/st self-drilling screw $\frac{3}{16}'' \times \frac{3}{4}''$	13. Jamb closure (NBEC)	20. Hanger, adjustable	
5. #12x1 TEKSELECT screw	14. Horizontal L-profile	21. Hanger, non-adjustable	
6. Vertical L-profile	15. Coping (NBEC)	22. S/S adjustment screw	
7. Insulation (NBEC)	16. Perforated window head closure (NBEC)	23. Vertical joint closure	
8. Terracotta panel			
9. A/V barrier (NBEC)			

Base detail



Legend

1. Steel stud (16 GA typical) (NBEC)	10. Exterior wall (NBEC)	17. Window sill (NBEC)	D - System depth t - Panel thickness R - Carrier rail and Hanger * Ventilation will vary based on insulation depth. ** Minimum ventilation requirement should be qualified by panel manufacturer. *** One of adjustable hangers per panel to be fixed with structural silicone **** (NBEC) - Not by Eco Cladding.
2. Perimeter anchor (NBEC)	11. Outer corner closure 1 (NBEC)	18. Perforated base closure (NBEC)	
3. Sigma wall bracket	12. Outer corner closure 2 (NBEC)	19. Carrier rail	
4. st/st self-drilling screw $\frac{3}{16} \times \frac{3}{4}$ "	13. Jamb closure (NBEC)	20. Hanger, adjustable	
5. #12x1 TEKSELECT screw	14. Horizontal L-profile	21. Hanger, non-adjustable	
6. Vertical L-profile	15. Coping (NBEC)	22. S/S adjustment screw	
7. Insulation (NBEC)	16. Perforated window head closure (NBEC)	23. Vertical joint closure	
8. Terracotta panel			
9. A/V barrier (NBEC)			