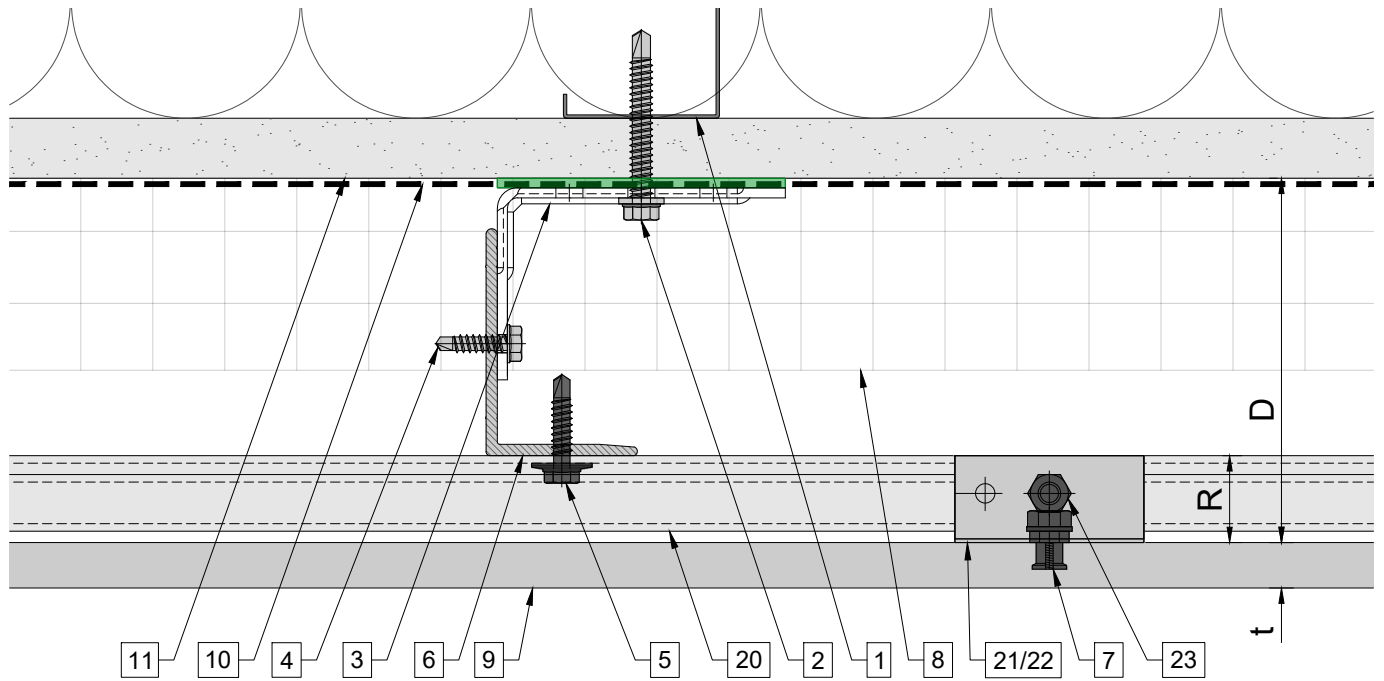


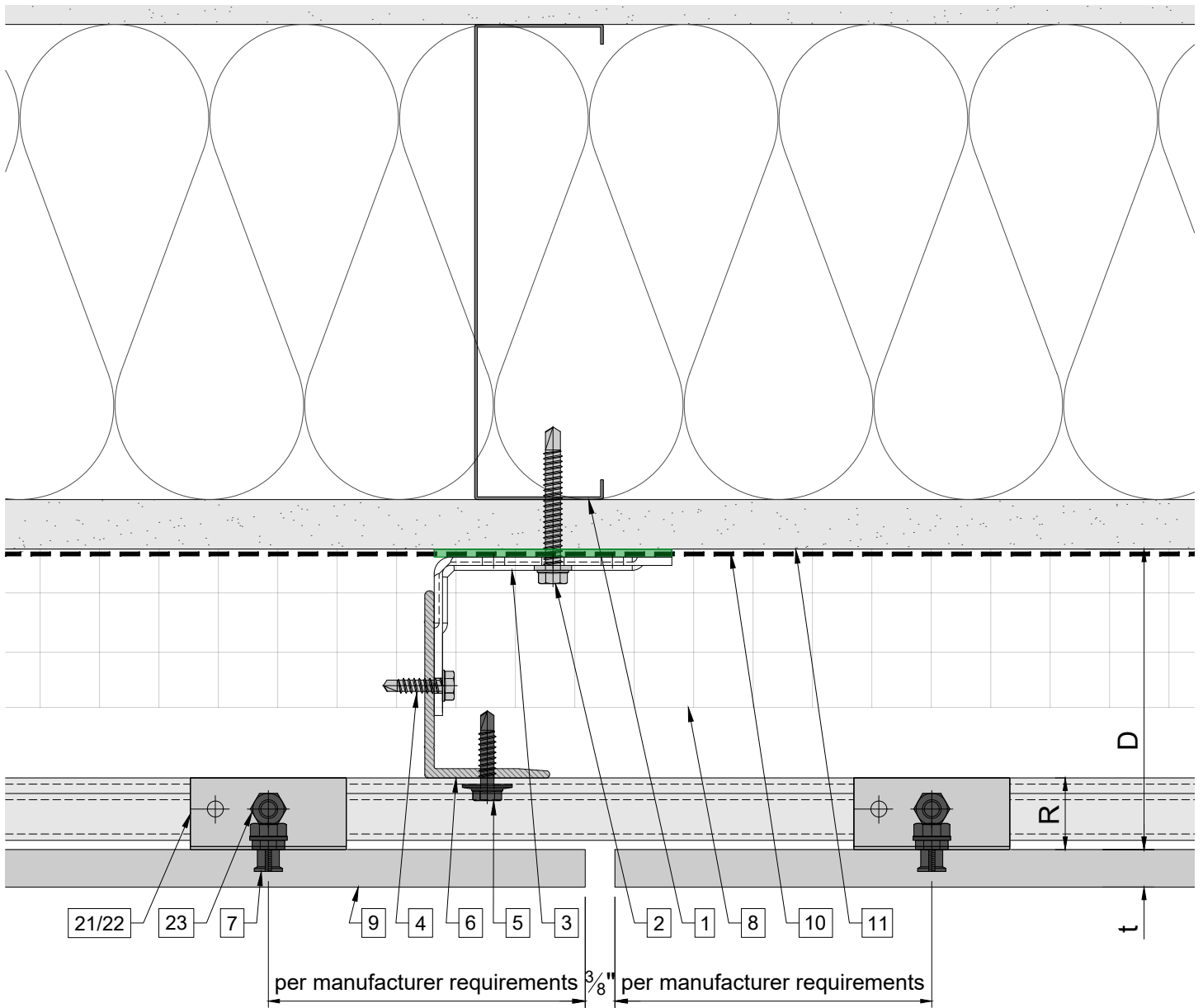
System depth



System depth					
Bracket	nominal D System depth	min. D system depth	max. D system depth	R	t panel thickness
Sigma U.02	4"	3 ³ / ₈ "	4 ⁵ / ₈ "	7 ⁷ / ₈ "	varies
Sigma U.03	4 ⁷ / ₈ "	4 ¹ / ₈ "	5 ⁵ / ₈ "	7 ⁷ / ₈ "	varies
Sigma U.04	5 ⁷ / ₈ "	5 ¹ / ₈ "	6 ⁵ / ₈ "	7 ⁷ / ₈ "	varies
Sigma U.05	6 ⁷ / ₈ "	6 ¹ / ₈ "	7 ⁵ / ₈ "	7 ⁷ / ₈ "	varies
Sigma U.06	7 ⁷ / ₈ "	7 ¹ / ₈ "	8 ⁵ / ₈ "	7 ⁷ / ₈ "	varies
Sigma U.07	8 ⁷ / ₈ "	8 ¹ / ₈ "	9 ⁵ / ₈ "	7 ⁷ / ₈ "	varies
Sigma U.08	9 ⁷ / ₈ "	9 ¹ / ₈ "	10 ⁵ / ₈ "	7 ⁷ / ₈ "	varies
Sigma U.09	10 ⁷ / ₈ "	10 ¹ / ₈ "	11 ⁵ / ₈ "	7 ⁷ / ₈ "	varies
Sigma U.10	11 ⁷ / ₈ "	11 ¹ / ₈ "	12 ⁵ / ₈ "	7 ⁷ / ₈ "	varies
Sigma U.11	12 ⁷ / ₈ "	12 ¹ / ₈ "	13 ⁵ / ₈ "	7 ⁷ / ₈ "	varies
Sigma U.12	13 ⁷ / ₈ "	13 ¹ / ₈ "	14 ⁵ / ₈ "	7 ⁷ / ₈ "	varies

Legend			
1. Steel stud (16 GA typical) (NBEC)	11. Exterior wall (NBEC)	21. C-hanger, adjustable	* Ventilation will vary based on insulation depth. ** Minimum ventilation requirement should be qualified by panel manufacturer. *** One of adjustable C-hangers per panel to be fixed with fixing screw 3/16"x1" **** (NBEC) - Not by Eco Cladding.
2. Perimeter anchor (NBEC)	12. Outer corner closure (NBEC)	22. C-hanger, non-adjustable	
3. Sigma wall bracket	13. Inner corner closure (NBEC)	23. Leveling bolt M6	
4. st/st self-drilling screw 3/16"x3"	14. Jamb closure (NBEC)	24. Fixing screw 3/16"x1"	
5. st/st self-drilling screw 1/4"x1"	15. Horizontal L-profile	25. Rivet	
6. Vertical L-profile	16. Coping (NBEC)	D - System depth	
7. Undercut anchor	17. Perforated window head closure (NBEC)	t - Panel thickness	
8. Insulation (NBEC)	18. Window sill (NBEC)	R - C-carrier rail and C-hanger	
9. Panel	19. Perforated base closure (NBEC)		
10. A/V barrier (NBEC)	20. C-carrier rail		

Vertical joint



Legend

- 1. Steel stud (16 GA typical) (NBEC)
- 2. Perimeter anchor (NBEC)
- 3. Sigma wall bracket
- 4. st/st self-drilling screw $\frac{3}{16}$ "x $\frac{3}{4}$ "
- 5. st/st self-drilling screw $\frac{1}{4}$ "x1"
- 6. Vertical L-profile
- 7. Undercut anchor
- 8. Insulation (NBEC)
- 9. Panel
- 10. A/V barrier (NBEC)

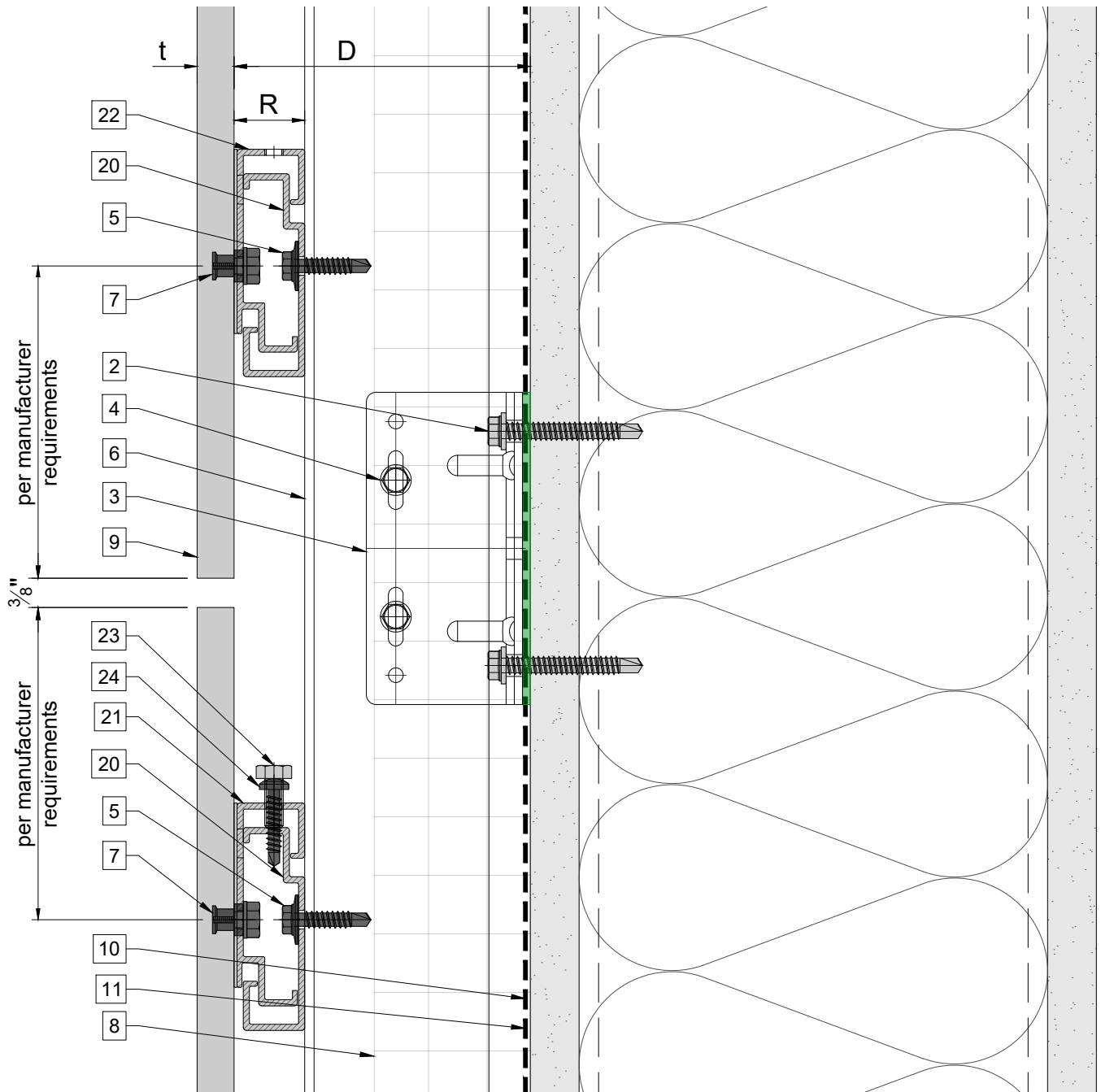
- 11. Exterior wall (NBEC)
- 12. Outer corner closure (NBEC)
- 13. Inner corner closure (NBEC)
- 14. Jamb closure (NBEC)
- 15. Horizontal L-profile
- 16. Coping (NBEC)
- 17. Perforated window head closure (NBEC)
- 18. Window sill (NBEC)
- 19. Perforated base closure (NBEC)
- 20. C-carrier rail

- 21. C-hanger, adjustable
- 22. C-hanger, non-adjustable
- 23. Leveling bolt M6
- 24. Fixing screw $\frac{3}{16}$ "x1"
- 25. Rivet

D - System depth
 t - Panel thickness
 R - C-carrier rail and C-hanger

* Ventilation will vary based on insulation depth.
 ** Minimum ventilation requirement should be qualified by panel manufacturer.
 *** One of adjustable C-hangers per panel to be fixed with fixing screw $\frac{3}{16}$ "x1"
 **** (NBEC) - Not by Eco Cladding.

Horizontal joint



Legend

1. Steel stud (16 GA typical) (NBEC)
2. Perimeter anchor (NBEC)
3. Sigma wall bracket
4. st/st self-drilling screw $\frac{3}{16}'' \times \frac{3}{4}''$
5. st/st self-drilling screw $\frac{1}{4}'' \times 1''$
6. Vertical L-profile
7. Undercut anchor
8. Insulation (NBEC)
9. Panel
10. A/V barrier (NBEC)

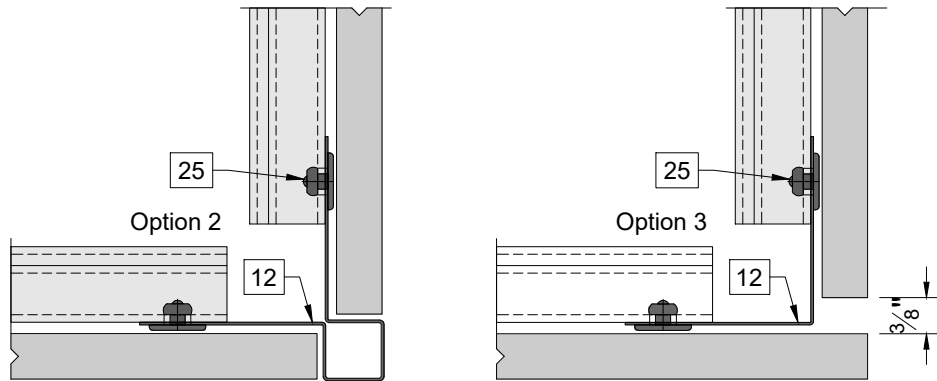
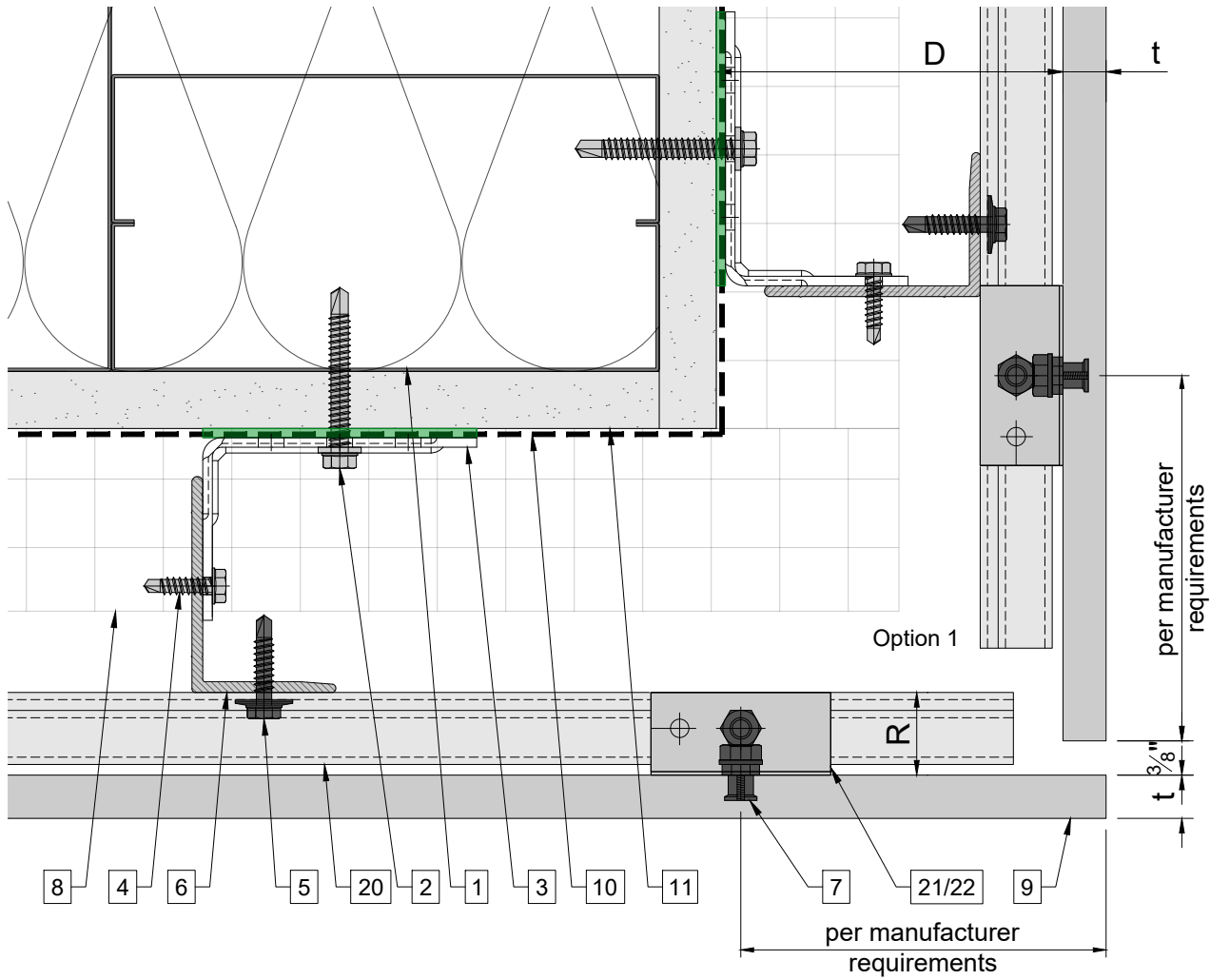
11. Exterior wall (NBEC)
12. Outer corner closure (NBEC)
13. Inner corner closure (NBEC)
14. Jamb closure (NBEC)
15. Horizontal L-profile
16. Coping (NBEC)
17. Perforated window head closure (NBEC)
18. Window sill (NBEC)
19. Perforated base closure (NBEC)
20. C-carrier rail

21. C-hanger, adjustable
22. C-hanger, non-adjustable
23. Leveling bolt M6
24. Fixing screw $\frac{3}{16}'' \times 1''$
25. Rivet

D - System depth
 t - Panel thickness
 R - C-carrier rail and C-hanger

* Ventilation will vary based on insulation depth.
 ** Minimum ventilation requirement should be qualified by panel manufacturer.
 *** One of adjustable C-hangers per panel to be fixed with fixing screw $\frac{3}{16}'' \times 1''$
 **** (NBEC) - Not by Eco Cladding.

Outer corner



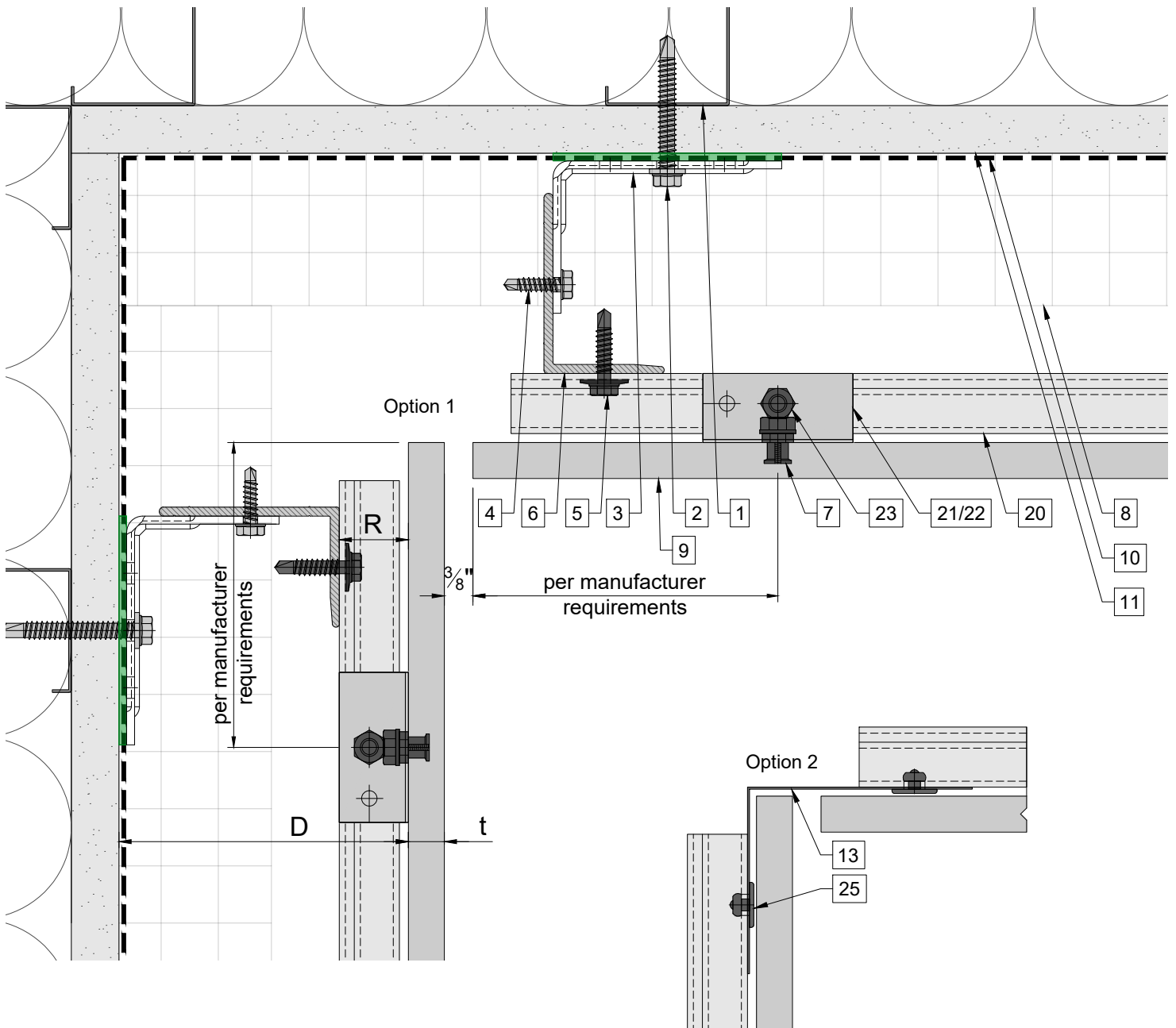
Legend

- 1. Steel stud (16 GA typical) (NBEC)
- 2. Perimeter anchor (NBEC)
- 3. Sigma wall bracket
- 4. st/st self-drilling screw $\frac{3}{16}$ "x $\frac{3}{4}$ "
- 5. st/st self-drilling screw $\frac{1}{4}$ "x1"
- 6. Vertical L-profile
- 7. Undercut anchor
- 8. Insulation (NBEC)
- 9. Panel
- 10. A/V barrier (NBEC)

- 11. Exterior wall (NBEC)
- 12. Outer corner closure (NBEC)
- 13. Inner corner closure (NBEC)
- 14. Jamb closure (NBEC)
- 15. Horizontal L-profile
- 16. Coping (NBEC)
- 17. Perforated window head closure (NBEC)
- 18. Window sill (NBEC)
- 19. Perforated base closure (NBEC)
- 20. C-carrier rail

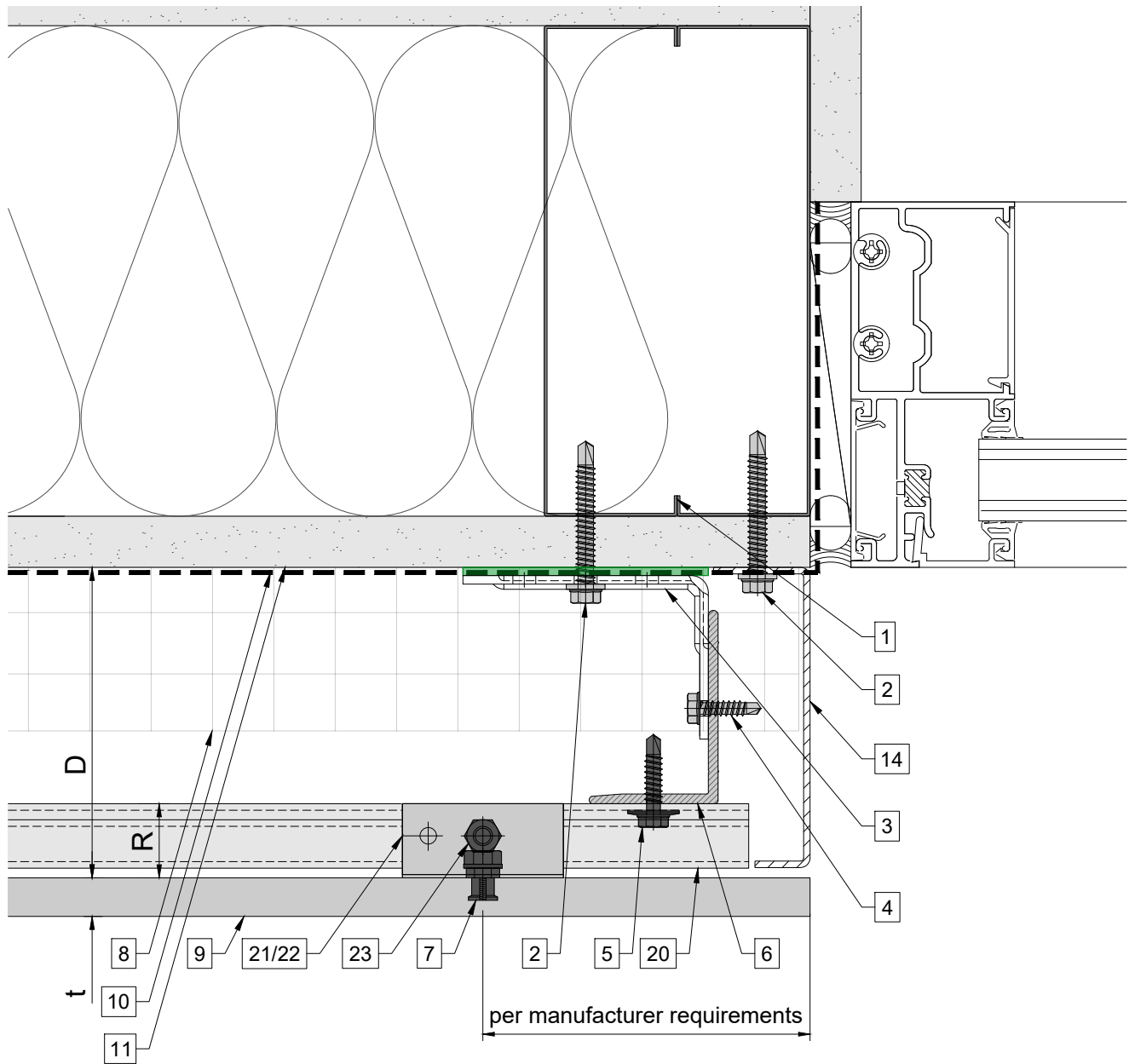
- 21. C-hanger, adjustable
 - 22. C-hanger, non-adjustable
 - 23. Leveling bolt M6
 - 24. Fixing screw $\frac{3}{16}$ "x1"
 - 25. Rivet
- D - System depth
t - Panel thickness
R - C-carrier rail and C-hanger

* Ventilation will vary based on insulation depth.
 ** Minimum ventilation requirement should be qualified by panel manufacturer.
 *** One of adjustable C-hangers per panel to be fixed with fixing screw $\frac{3}{16}$ "x1"
 **** (NBEC) - Not by Eco Cladding.



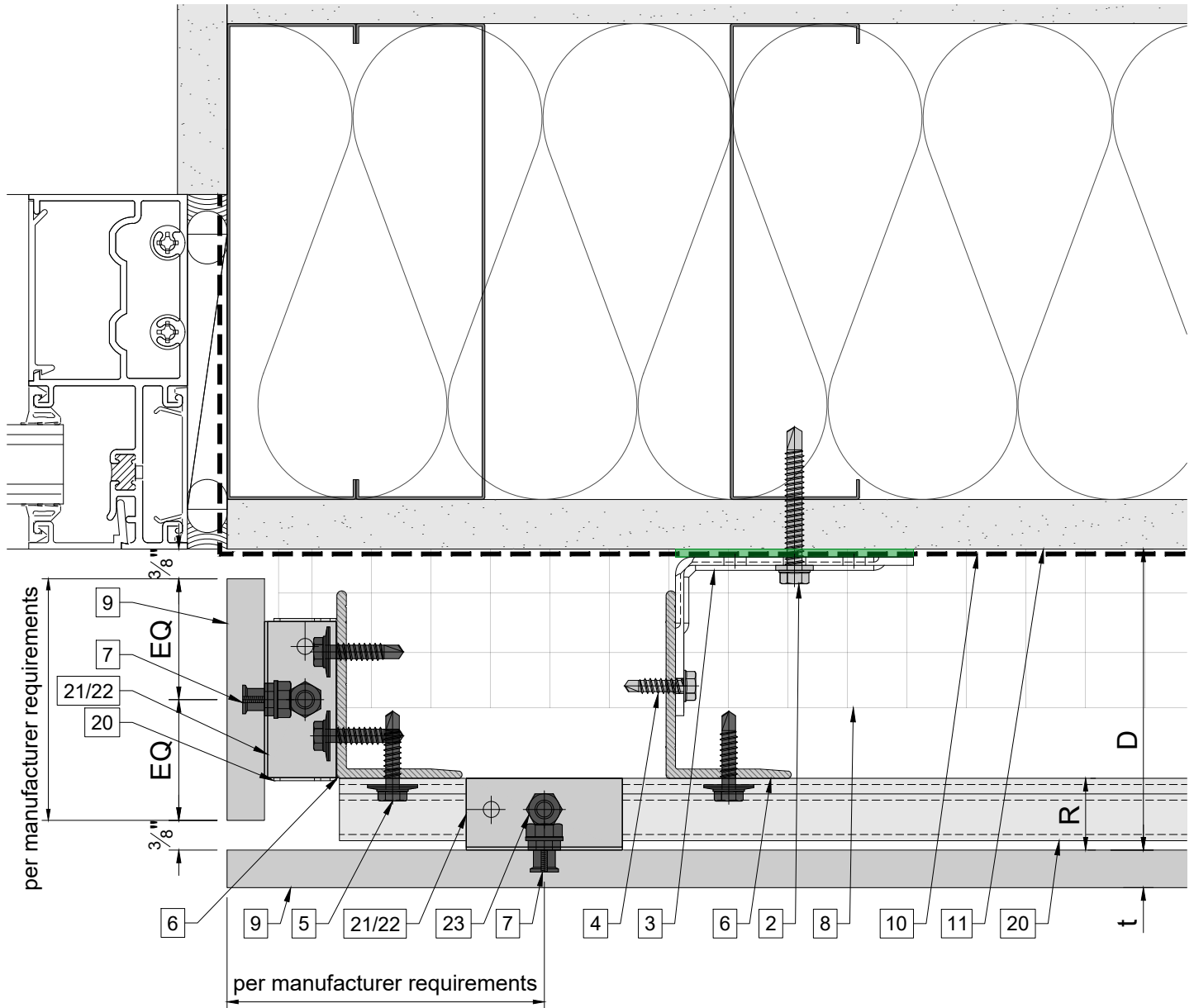
Legend			
1. Steel stud (16 GA typical) (NBEC)	11. Exterior wall (NBEC)	21. C-hanger, adjustable	* Ventilation will vary based on insulation depth. ** Minimum ventilation requirement should be qualified by panel manufacturer. *** One of adjustable C-hangers per panel to be fixed with fixing screw 3/16"x1" **** (NBEC) - Not by Eco Cladding.
2. Perimeter anchor (NBEC)	12. Outer corner closure (NBEC)	22. C-hanger, non-adjustable	
3. Sigma wall bracket	13. Inner corner closure (NBEC)	23. Leveling bolt M6	
4. st/st self-drilling screw 3/16"x3/4"	14. Jamb closure (NBEC)	24. Fixing screw 3/16"x1"	
5. st/st self-drilling screw 1/4"x1"	15. Horizontal L-profile	25. Rivet	
6. Vertical L-profile	16. Coping (NBEC)		
7. Undercut anchor	17. Perforated window head closure (NBEC)	D - System depth	
8. Insulation (NBEC)	18. Window sill (NBEC)	t - Panel thickness	
9. Panel	19. Perforated base closure (NBEC)	R - C-carrier rail and C-hanger	
10. A/V barrier (NBEC)	20. C-carrier rail		

Window jamb (option 1)



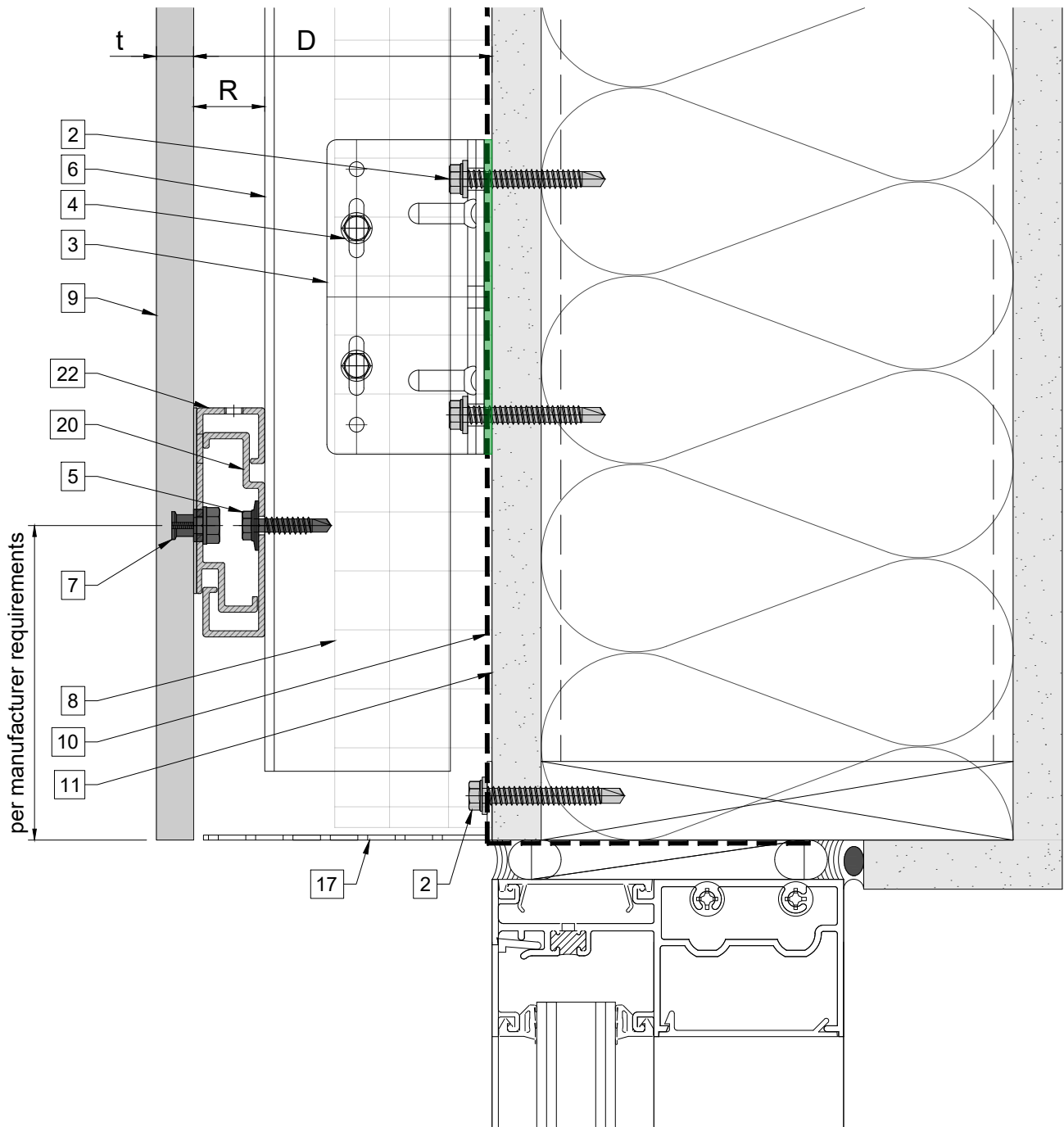
Legend			
1. Steel stud (16 GA typical) (NBEC)	11. Exterior wall (NBEC)	21. C-hanger, adjustable	* Ventilation will vary based on insulation depth. ** Minimum ventilation requirement should be qualified by panel manufacturer. *** One of adjustable C-hangers per panel to be fixed with fixing screw 3/16"x1" **** (NBEC) - Not by Eco Cladding.
2. Perimeter anchor (NBEC)	12. Outer corner closure (NBEC)	22. C-hanger, non-adjustable	
3. Sigma wall bracket	13. Inner corner closure (NBEC)	23. Leveling bolt M6	
4. st/st self-drilling screw 3/16"x3/4"	14. Jamb closure (NBEC)	24. Fixing screw 3/16"x1"	
5. st/st self-drilling screw 1/4"x1"	15. Horizontal L-profile	25. Rivet	
6. Vertical L-profile	16. Coping (NBEC)	D - System depth	
7. Undercut anchor	17. Perforated window head closure (NBEC)	t - Panel thickness	
8. Insulation (NBEC)	18. Window sill (NBEC)	R - C-carrier rail and C-hanger	
9. Panel	19. Perforated base closure (NBEC)		
10. A/V barrier (NBEC)	20. C-carrier rail		

Window jamb (option 2)



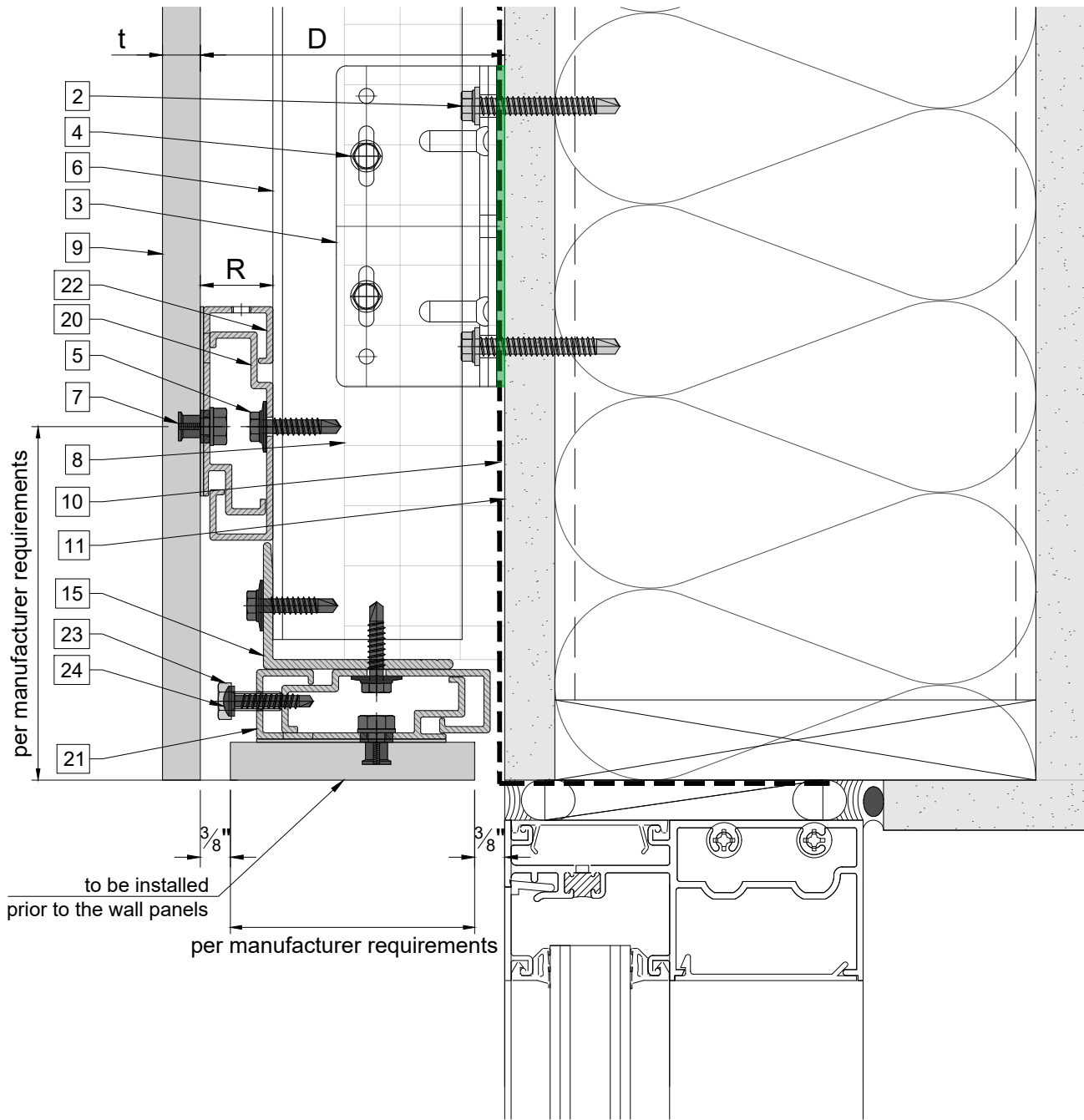
Legend			
1. Steel stud (16 GA typical) (NBEC)	11. Exterior wall (NBEC)	21. C-hanger, adjustable	* Ventilation will vary based on insulation depth. ** Minimum ventilation requirement should be qualified by panel manufacturer. *** One of adjustable C-hangers per panel to be fixed with fixing screw 3/16"x1" **** (NBEC) - Not by Eco Cladding.
2. Perimeter anchor (NBEC)	12. Outer corner closure (NBEC)	22. C-hanger, non-adjustable	
3. Sigma wall bracket	13. Inner corner closure (NBEC)	23. Leveling bolt M6	
4. st/st self-drilling screw 3/16"x3/4"	14. Jamb closure (NBEC)	24. Fixing screw 3/16"x1"	
5. st/st self-drilling screw 1/4"x1"	15. Horizontal L-profile	25. Rivet	
6. Vertical L-profile	16. Coping (NBEC)	D - System depth	
7. Undercut anchor	17. Perforated window head closure (NBEC)	t - Panel thickness	
8. Insulation (NBEC)	18. Window sill (NBEC)	R - C-carrier rail and C-hanger	
9. Panel	19. Perforated base closure (NBEC)		
10. A/V barrier (NBEC)	20. C-carrier rail		

Window head (option 1)

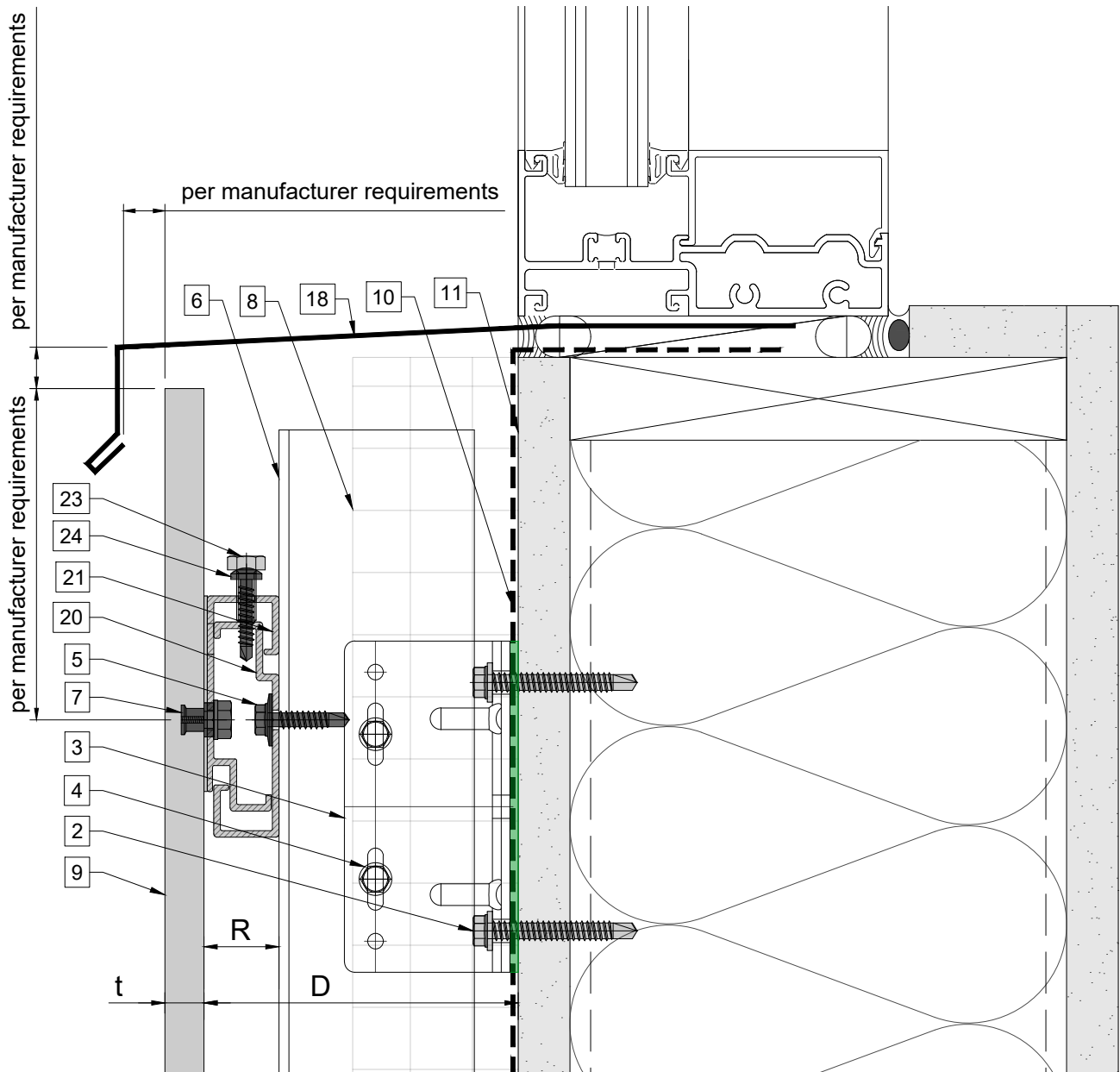


Legend			
1. Steel stud (16 GA typical) (NBEC)	11. Exterior wall (NBEC)	21. C-hanger, adjustable	* Ventilation will vary based on insulation depth. ** Minimum ventilation requirement should be qualified by panel manufacturer. *** One of adjustable C-hangers per panel to be fixed with fixing screw 3/16"x1" **** (NBEC) - Not by Eco Cladding.
2. Perimeter anchor (NBEC)	12. Outer corner closure (NBEC)	22. C-hanger, non-adjustable	
3. Sigma wall bracket	13. Inner corner closure (NBEC)	23. Leveling bolt M6	
4. st/st self-drilling screw $\frac{3}{16}$ "x $\frac{3}{4}$ "	14. Jamb closure (NBEC)	24. Fixing screw $\frac{3}{16}$ "x1"	
5. st/st self-drilling screw $\frac{1}{4}$ "x1"	15. Horizontal L-profile	25. Rivet	
6. Vertical L-profile	16. Coping (NBEC)	D - System depth	
7. Undercut anchor	17. Perforated window head closure (NBEC)	t - Panel thickness	
8. Insulation (NBEC)	18. Window sill (NBEC)	R - C-carrier rail and C-hanger	
9. Panel	19. Perforated base closure (NBEC)		
10. A/V barrier (NBEC)	20. C-carrier rail		

Window head (option 2)



Legend			
1. Steel stud (16 GA typical) (NBEC)	11. Exterior wall (NBEC)	21. C-hanger, adjustable	* Ventilation will vary based on insulation depth. ** Minimum ventilation requirement should be qualified by panel manufacturer. *** One of adjustable C-hangers per panel to be fixed with fixing screw 3/16"x1" **** (NBEC) - Not by Eco Cladding.
2. Perimeter anchor (NBEC)	12. Outer corner closure (NBEC)	22. C-hanger, non-adjustable	
3. Sigma wall bracket	13. Inner corner closure (NBEC)	23. Leveling bolt M6	
4. st/st self-drilling screw 3/16"x3/4"	14. Jamb closure (NBEC)	24. Fixing screw 3/16"x1"	
5. st/st self-drilling screw 1/4"x1"	15. Horizontal L-profile	25. Rivet	
6. Vertical L-profile	16. Coping (NBEC)	D - System depth	
7. Undercut anchor	17. Perforated window head closure (NBEC)	t - Panel thickness	
8. Insulation (NBEC)	18. Window sill (NBEC)	R - C-carrier rail and C-hanger	
9. Panel	19. Perforated base closure (NBEC)		
10. A/V barrier (NBEC)	20. C-carrier rail		



Legend

- 1. Steel stud (16 GA typical) (NBEC)
- 2. Perimeter anchor (NBEC)
- 3. Sigma wall bracket
- 4. st/st self-drilling screw $\frac{3}{16}$ "x $\frac{3}{4}$ "
- 5. st/st self-drilling screw $\frac{1}{4}$ "x1"
- 6. Vertical L-profile
- 7. Undercut anchor
- 8. Insulation (NBEC)
- 9. Panel
- 10. A/V barrier (NBEC)

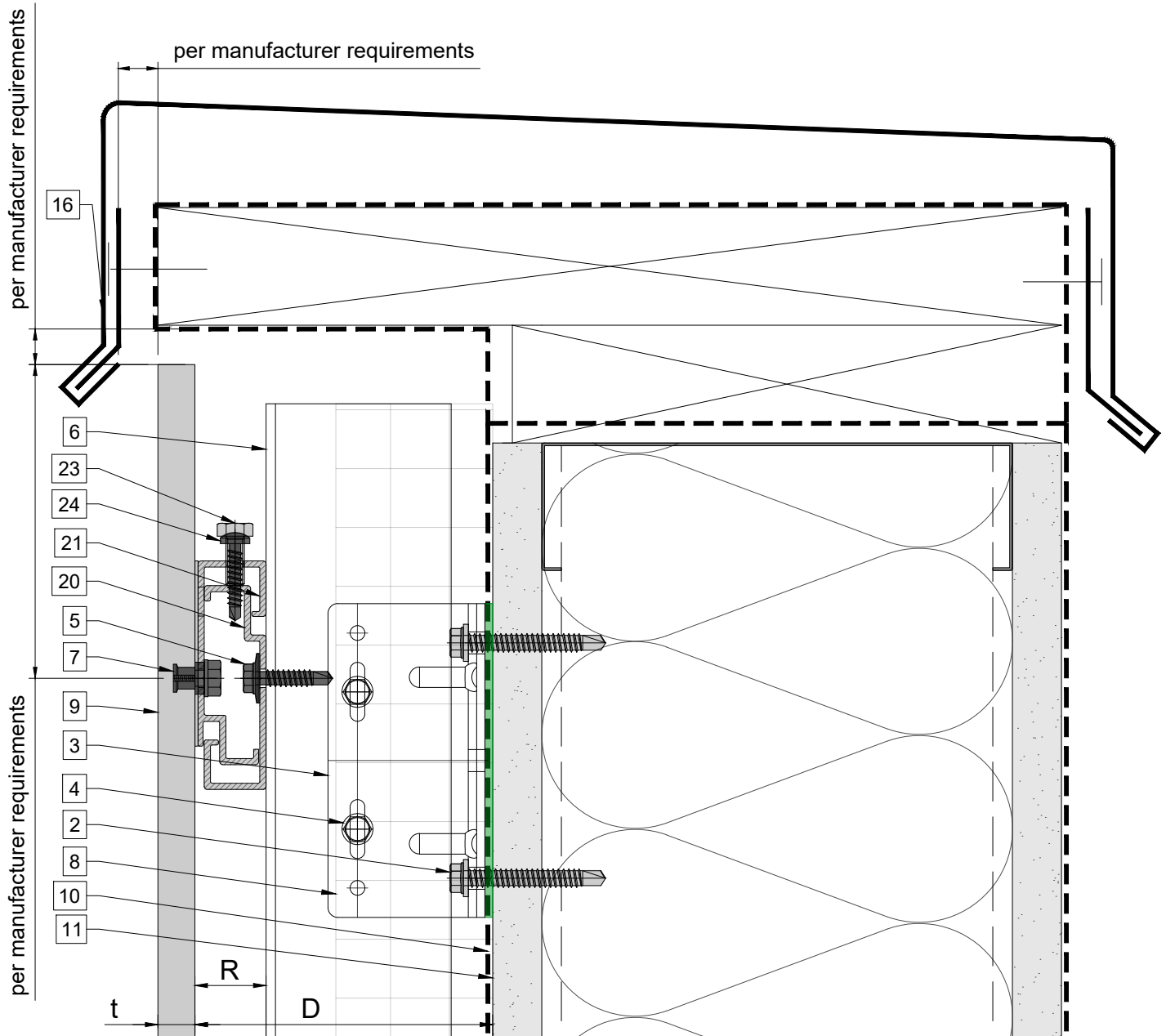
- 11. Exterior wall (NBEC)
- 12. Outer corner closure (NBEC)
- 13. Inner corner closure (NBEC)
- 14. Jamb closure (NBEC)
- 15. Horizontal L-profile
- 16. Coping (NBEC)
- 17. Perforated window head closure (NBEC)
- 18. Window sill (NBEC)
- 19. Perforated base closure (NBEC)
- 20. C-carrier rail

- 21. C-hanger, adjustable
- 22. C-hanger, non-adjustable
- 23. Leveling bolt M6
- 24. Fixing screw $\frac{3}{16}$ "x1"
- 25. Rivet

D - System depth
 t - Panel thickness
 R - C-carrier rail and C-hanger

* Ventilation will vary based on insulation depth.
 ** Minimum ventilation requirement should be qualified by panel manufacturer.
 *** One of adjustable C-hangers per panel to be fixed with fixing screw $\frac{3}{16}$ "x1"
 **** (NBEC) - Not by Eco Cladding.

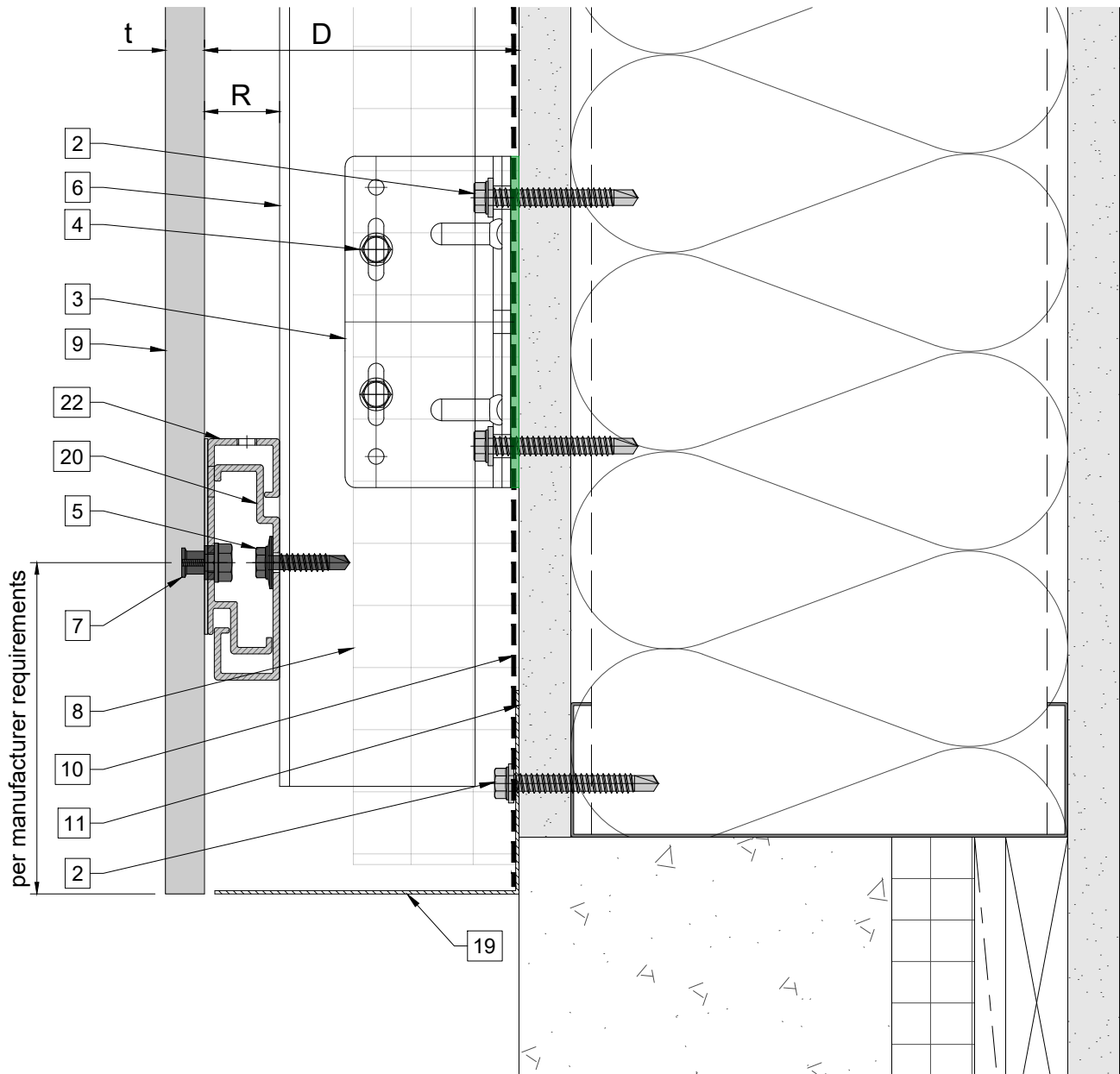
Coping detail



Legend

1. Steel stud (16 GA typical) (NBEC)	11. Exterior wall (NBEC)	21. C-hanger, adjustable	* Ventilation will vary based on insulation depth. ** Minimum ventilation requirement should be qualified by panel manufacturer. *** One of adjustable C-hangers per panel to be fixed with fixing screw 3/16"x1" **** (NBEC) - Not by Eco Cladding.
2. Perimeter anchor (NBEC)	12. Outer corner closure (NBEC)	22. C-hanger, non-adjustable	
3. Sigma wall bracket	13. Inner corner closure (NBEC)	23. Leveling bolt M6	
4. st/st self-drilling screw $\frac{3}{16}$ "x $\frac{3}{4}$ "	14. Jamb closure (NBEC)	24. Fixing screw $\frac{3}{16}$ "x1"	
5. st/st self-drilling screw $\frac{1}{4}$ "x1"	15. Horizontal L-profile	25. Rivet	
6. Vertical L-profile	16. Coping (NBEC)		
7. Undercut anchor	17. Perforated window head closure (NBEC)	D - System depth	
8. Insulation (NBEC)	18. Window sill (NBEC)	t - Panel thickness	
9. Panel	19. Perforated base closure (NBEC)	R - C-carrier rail and C-hanger	
10. A/V barrier (NBEC)	20. C-carrier rail		

Base detail



Legend			
1. Steel stud (16 GA typical) (NBEC)	11. Exterior wall (NBEC)	21. C-hanger, adjustable	* Ventilation will vary based on insulation depth. ** Minimum ventilation requirement should be qualified by panel manufacturer. *** One of adjustable C-hangers per panel to be fixed with fixing screw 3/16"x1" **** (NBEC) - Not by Eco Cladding.
2. Perimeter anchor (NBEC)	12. Outer corner closure (NBEC)	22. C-hanger, non-adjustable	
3. Sigma wall bracket	13. Inner corner closure (NBEC)	23. Leveling bolt M6	
4. st/st self-drilling screw 3/16"x3/4"	14. Jamb closure (NBEC)	24. Fixing screw 3/16"x1"	
5. st/st self-drilling screw 1/4"x1"	15. Horizontal L-profile	25. Rivet	
6. Vertical L-profile	16. Coping (NBEC)		
7. Undercut anchor	17. Perforated window head closure (NBEC)	D - System depth	
8. Insulation (NBEC)	18. Window sill (NBEC)	t - Panel thickness	
9. Panel	19. Perforated base closure (NBEC)	R - C-carrier rail and C-hanger	
10. A/V barrier (NBEC)	20. C-carrier rail		