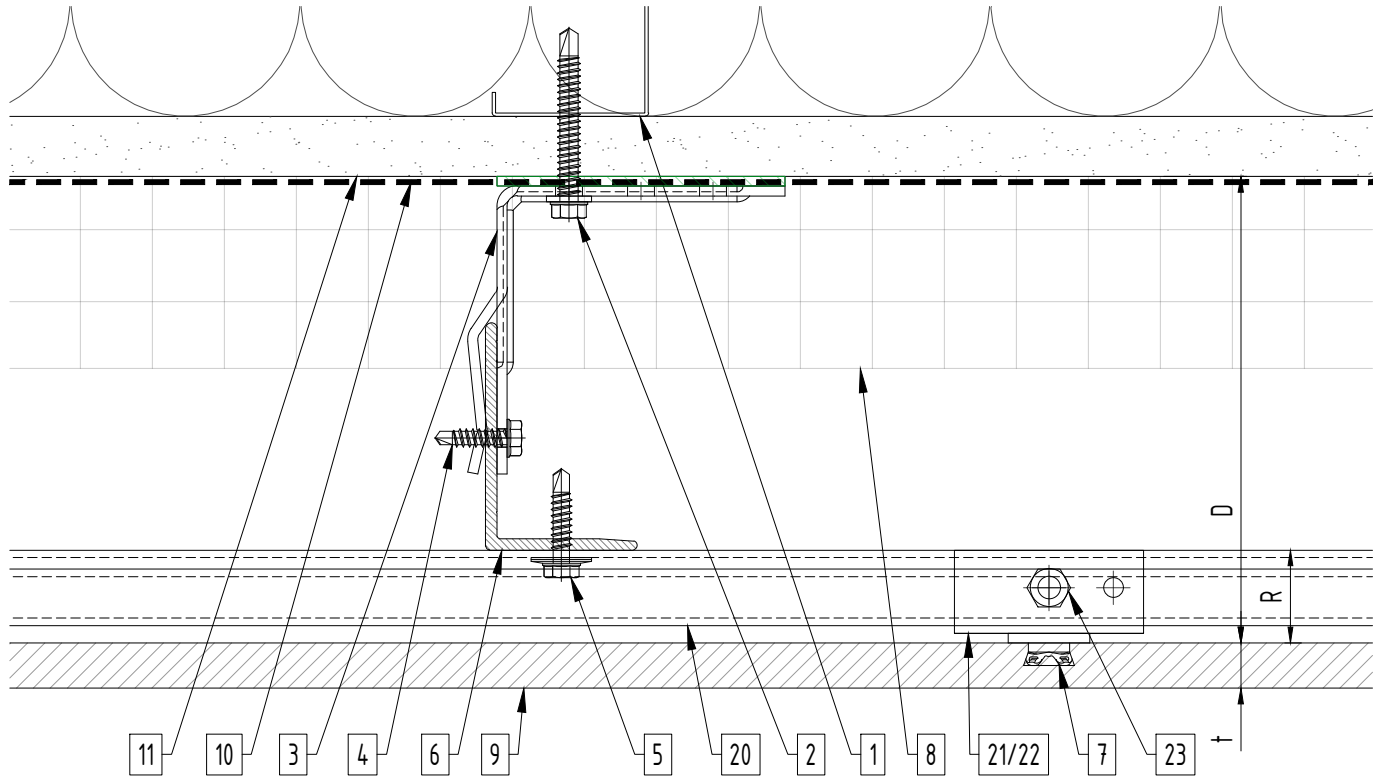


System depth



System depth

Bracket	nominal D System depth	min. D system depth	max. D system depth	R	t panel thickness
Sigma U.02	4"	3 ³ / ₈ "	4 ⁵ / ₈ "	7 ⁷ / ₈ "	varies
Sigma U.03	4 ⁷ / ₈ "	4 ¹ / ₈ "	5 ⁵ / ₈ "	7 ⁷ / ₈ "	varies
Sigma U.04	5 ⁷ / ₈ "	5 ¹ / ₈ "	6 ⁵ / ₈ "	7 ⁷ / ₈ "	varies
Sigma U.05	6 ⁷ / ₈ "	6 ¹ / ₈ "	7 ⁵ / ₈ "	7 ⁷ / ₈ "	varies
Sigma U.06	7 ⁷ / ₈ "	7 ¹ / ₈ "	8 ⁵ / ₈ "	7 ⁷ / ₈ "	varies
Sigma U.07	8 ⁷ / ₈ "	8 ¹ / ₈ "	9 ⁵ / ₈ "	7 ⁷ / ₈ "	varies
Sigma U.08	9 ⁷ / ₈ "	9 ¹ / ₈ "	10 ⁵ / ₈ "	7 ⁷ / ₈ "	varies
Sigma U.09	10 ⁷ / ₈ "	10 ¹ / ₈ "	11 ⁵ / ₈ "	7 ⁷ / ₈ "	varies
Sigma U.10	11 ⁷ / ₈ "	11 ¹ / ₈ "	12 ⁵ / ₈ "	7 ⁷ / ₈ "	varies
Sigma U.11	12 ⁷ / ₈ "	12 ¹ / ₈ "	13 ⁵ / ₈ "	7 ⁷ / ₈ "	varies
Sigma U.12	13 ⁷ / ₈ "	13 ¹ / ₈ "	14 ⁵ / ₈ "	7 ⁷ / ₈ "	varies

Legend

- 1. Steel stud (16 GA typical) (NBEC)
- 2. Perimeter anchor (NBEC)
- 3. Sigma wall bracket
- 4. st/st self-drilling screw $\frac{3}{16}'' \times \frac{3}{4}''$
- 5. st/st self-drilling screw $\frac{1}{4}'' \times 1''$
- 6. Vertical L-profile
- 7. Fischer anchor
- 8. Insulation (NBEC)
- 9. Panel
- 10. A/V barrier (NBEC)

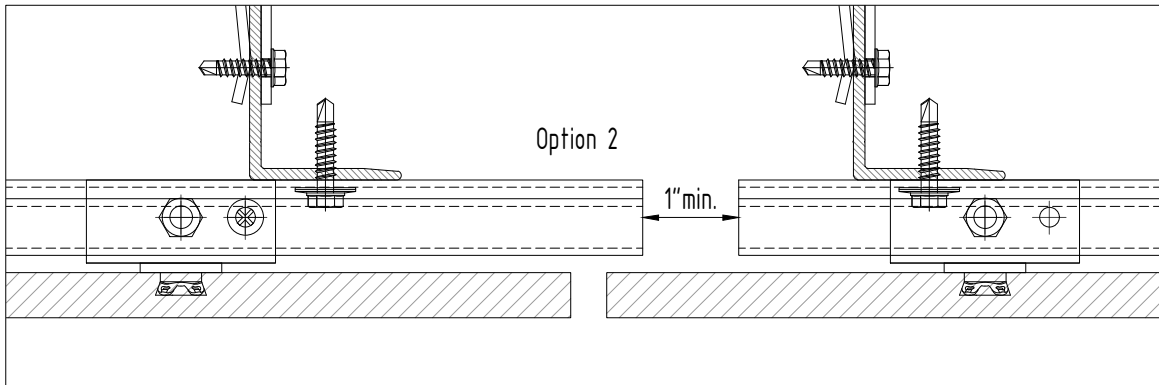
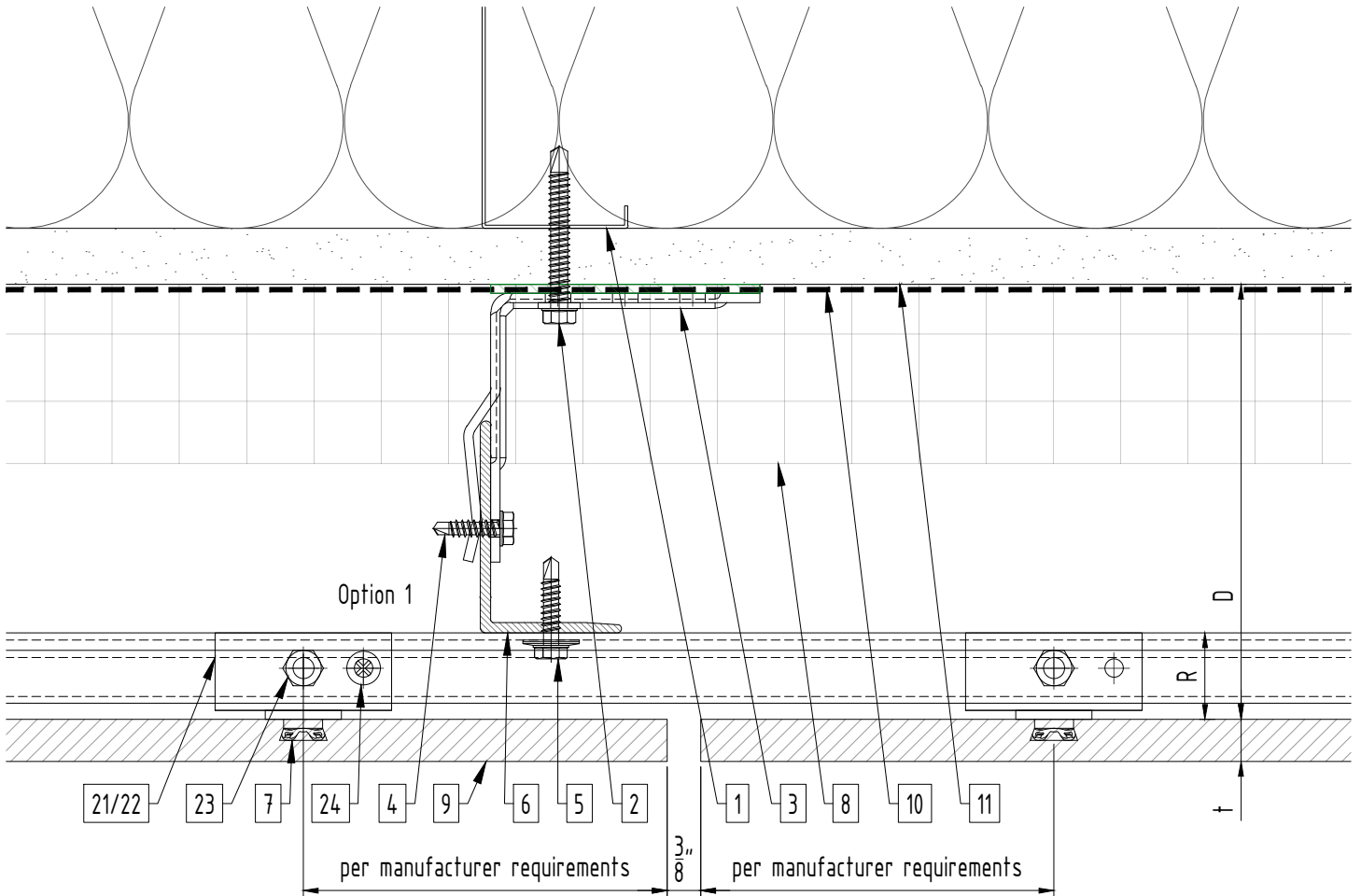
- 11. Exterior wall (NBEC)
- 12. Outer corner closure (NBEC)
- 13. Inner corner closure (NBEC)
- 14. Jamb closure (NBEC)
- 15. Horizontal L-profile
- 16. Coping (NBEC)
- 17. Perforated window head closure (NBEC)
- 18. Window sill (NBEC)
- 19. Perforated base closure (NBEC)
- 20. C-carrier rail

- 21. C-hanger, adjustable
- 22. C-hanger, non-adjustable
- 23. Leveling bolt M6
- 24. Fixing screw $\frac{3}{16}'' \times 1''$
- 25. Rivet
- 26. Perforated closure

D - System depth
 t - Panel thickness
 R - C-carrier rail and C-hanger

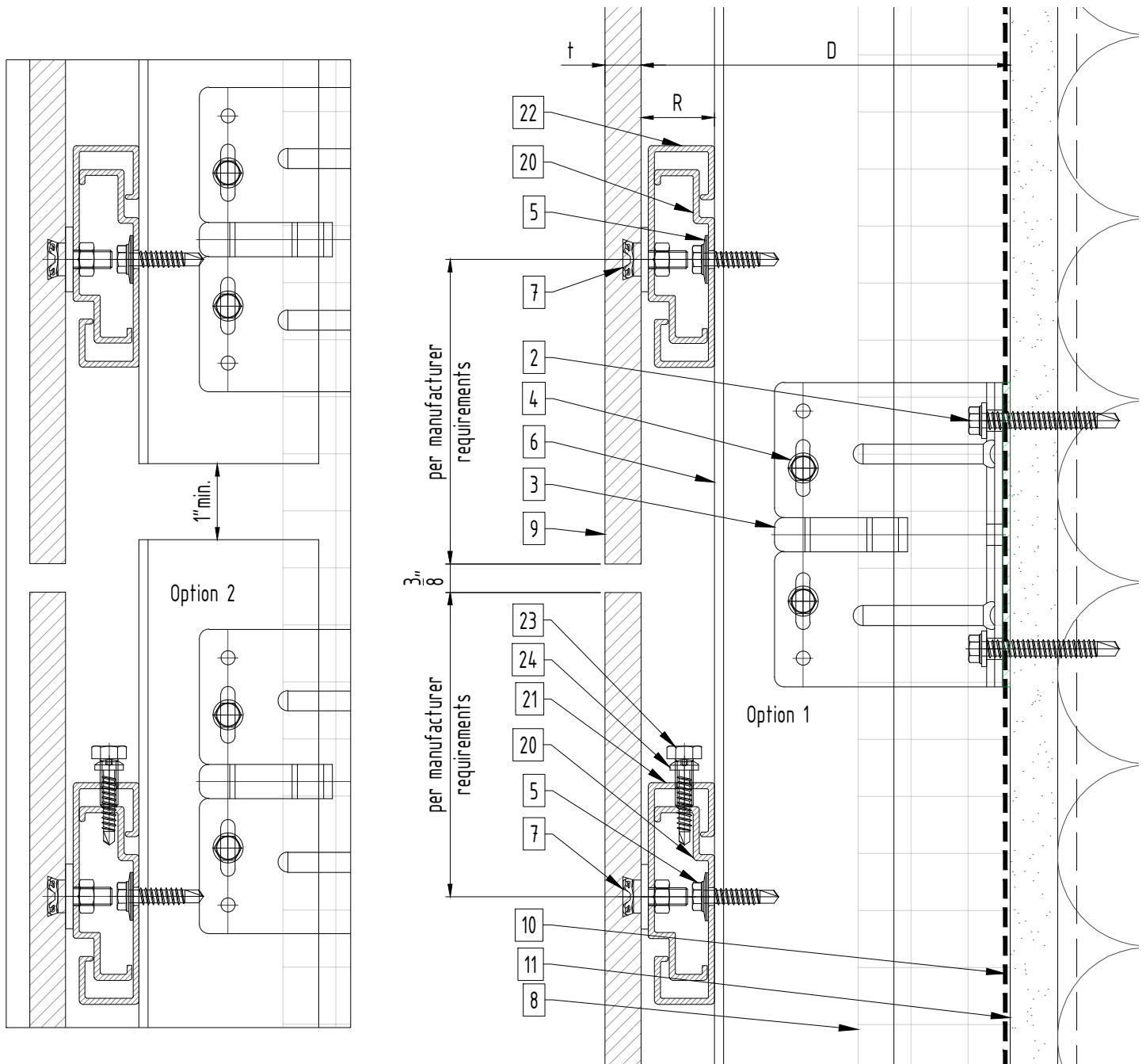
- * Ventilation will vary based on insulation depth.
- * Minimum ventilation requirement should be qualified by panel manufacturer.
- * System may be installed over steel studs, wood studs, CMU or concrete substrates (with use of appropriate perimeter anchors).
- * One of adjustable C-hangers per panel to be fixed fixing screw $\frac{3}{16}'' \times 1''$
- * NBEC - Not by EcoCladding.

Vertical joint



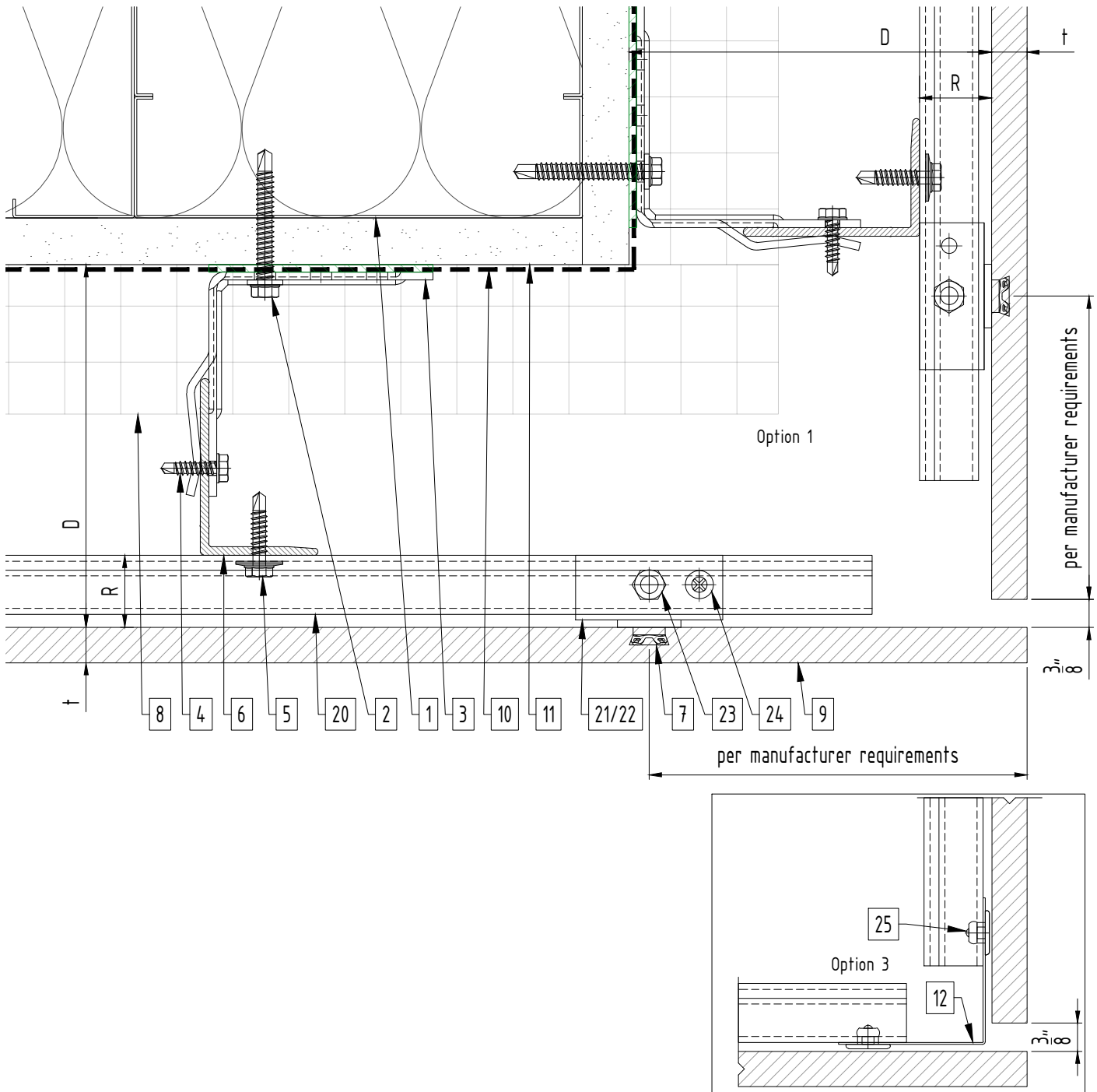
Legend			
1. Steel stud (16 GA typical) (NBEC)	11. Exterior wall (NBEC)	21. C-hanger, adjustable	* Ventilation will vary based on insulation depth. * Minimum ventilation requirement should be qualified by panel manufacturer. * System may be installed over steel studs, wood studs, CMU or concrete substrates (with use of appropriate perimeter anchors). * One of adjustable C-hangers per panel to be fixed fixing screw 3/16" x 1" * NBEC - Not by EcoCladding.
2. Perimeter anchor (NBEC)	12. Outer corner closure (NBEC)	22. C-hanger, non-adjustable	
3. Sigma wall bracket	13. Inner corner closure (NBEC)	23. Leveling bolt M6	
4. st/st self-drilling screw $\frac{3}{16} \times \frac{3}{4}$ "	14. Jamb closure (NBEC)	24. Fixing screw $\frac{3}{16} \times 1$ "	
5. st/st self-drilling screw $\frac{1}{4} \times 1$ "	15. Horizontal L-profile	25. Rivet	
6. Vertical L-profile	16. Coping (NBEC)	26. Perforated closure	
7. Fischer anchor	17. Perforated window head closure (NBEC)		
8. Insulation (NBEC)	18. Window sill (NBEC)		
9. Panel	19. Perforated base closure (NBEC)		
10. A/V barrier (NBEC)	20. C-carrier rail		
		D - System depth	
		t - Panel thickness	
		R - C-carrier rail and C-hanger	

Horizontal joint



Legend			
1. Steel stud (16 GA typical) (NBEC)	11. Exterior wall (NBEC)	21. C-hanger, adjustable	* Ventilation will vary based on insulation depth. * Minimum ventilation requirement should be qualified by panel manufacturer. * System may be installed over steel studs, wood studs, CMU or concrete substrates (with use of appropriate perimeter anchors). * One of adjustable C-hangers per panel to be fixed fixing screw 3/16" x 1" * NBEC - Not by EcoCladding.
2. Perimeter anchor (NBEC)	12. Outer corner closure (NBEC)	22. C-hanger, non-adjustable	
3. Sigma wall bracket	13. Inner corner closure (NBEC)	23. Leveling bolt M6	
4. st/st self-drilling screw $\frac{3}{16} \times \frac{3}{4}$ "	14. Jamb closure (NBEC)	24. Fixing screw $\frac{3}{16} \times 1"$	
5. st/st self-drilling screw $\frac{1}{4} \times 1"$	15. Horizontal L-profile	25. Rivet	
6. Vertical L-profile	16. Coping (NBEC)	26. Perforated closure	
7. Fischer anchor	17. Perforated window head closure (NBEC)		
8. Insulation (NBEC)	18. Window sill (NBEC)		
9. Panel	19. Perforated base closure (NBEC)		
10. A/V barrier (NBEC)	20. C-carrier rail		
		D - System depth	
		t - Panel thickness	
		R - C-carrier rail and C-hanger	

Outer corner



Legend

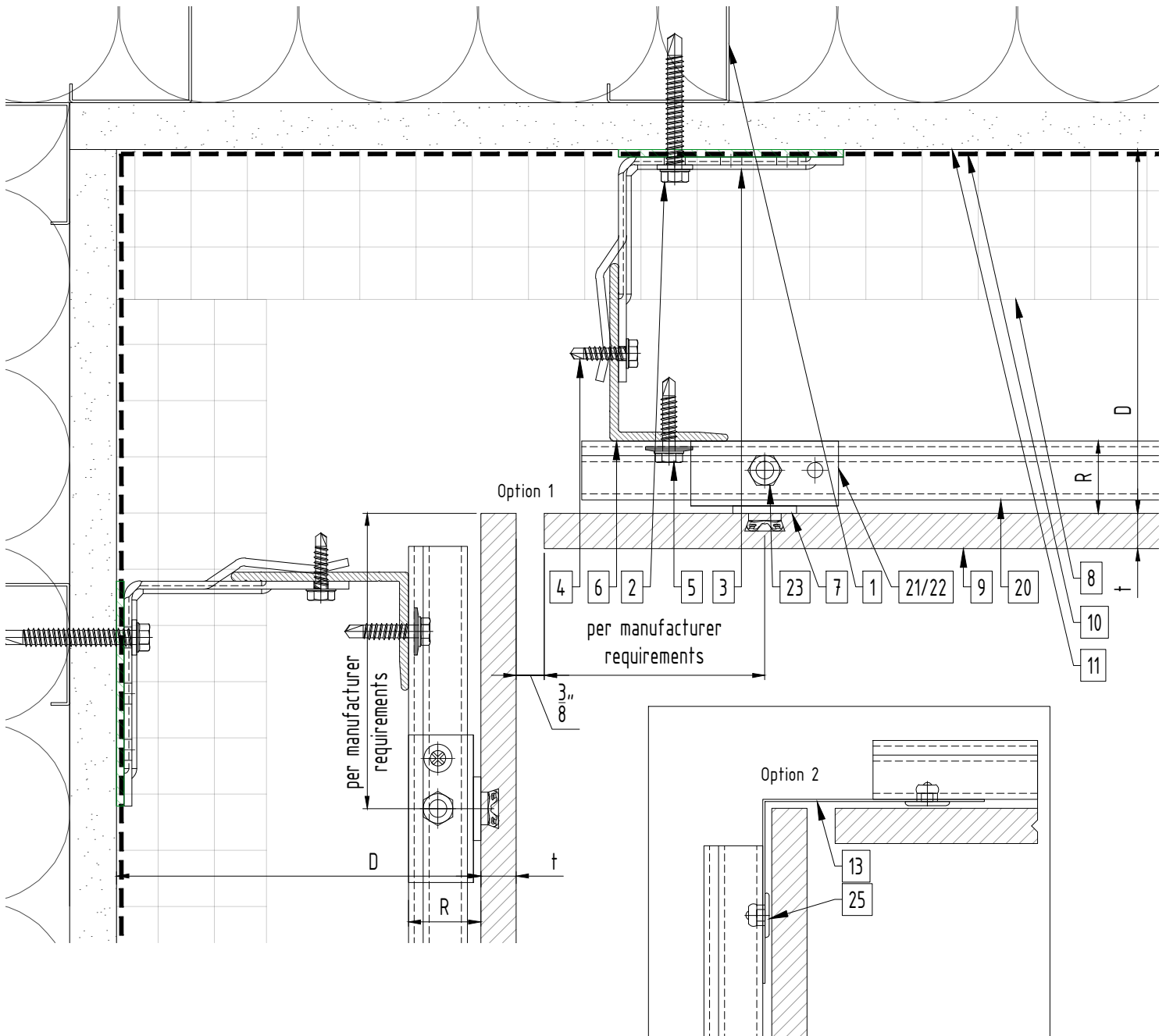
- 1. Steel stud (16 GA typical) (NBEC)
- 2. Perimeter anchor (NBEC)
- 3. Sigma wall bracket
- 4. st/st self-drilling screw $\frac{3}{16} \times \frac{3}{4}$ "
- 5. st/st self-drilling screw $\frac{1}{4} \times 1$ "
- 6. Vertical L-profile
- 7. Fischer anchor
- 8. Insulation (NBEC)
- 9. Panel
- 10. A/V barrier (NBEC)

- 11. Exterior wall (NBEC)
- 12. Outer corner closure (NBEC)
- 13. Inner corner closure (NBEC)
- 14. Jamb closure (NBEC)
- 15. Horizontal L-profile
- 16. Coping (NBEC)
- 17. Perforated window head closure (NBEC)
- 18. Window sill (NBEC)
- 19. Perforated base closure (NBEC)
- 20. C-carrier rail

- 21. C-hanger, adjustable
- 22. C-hanger, non-adjustable
- 23. Leveling bolt M6
- 24. Fixing screw $\frac{3}{16} \times 1$ "
- 25. Rivet
- 26. Perforated closure

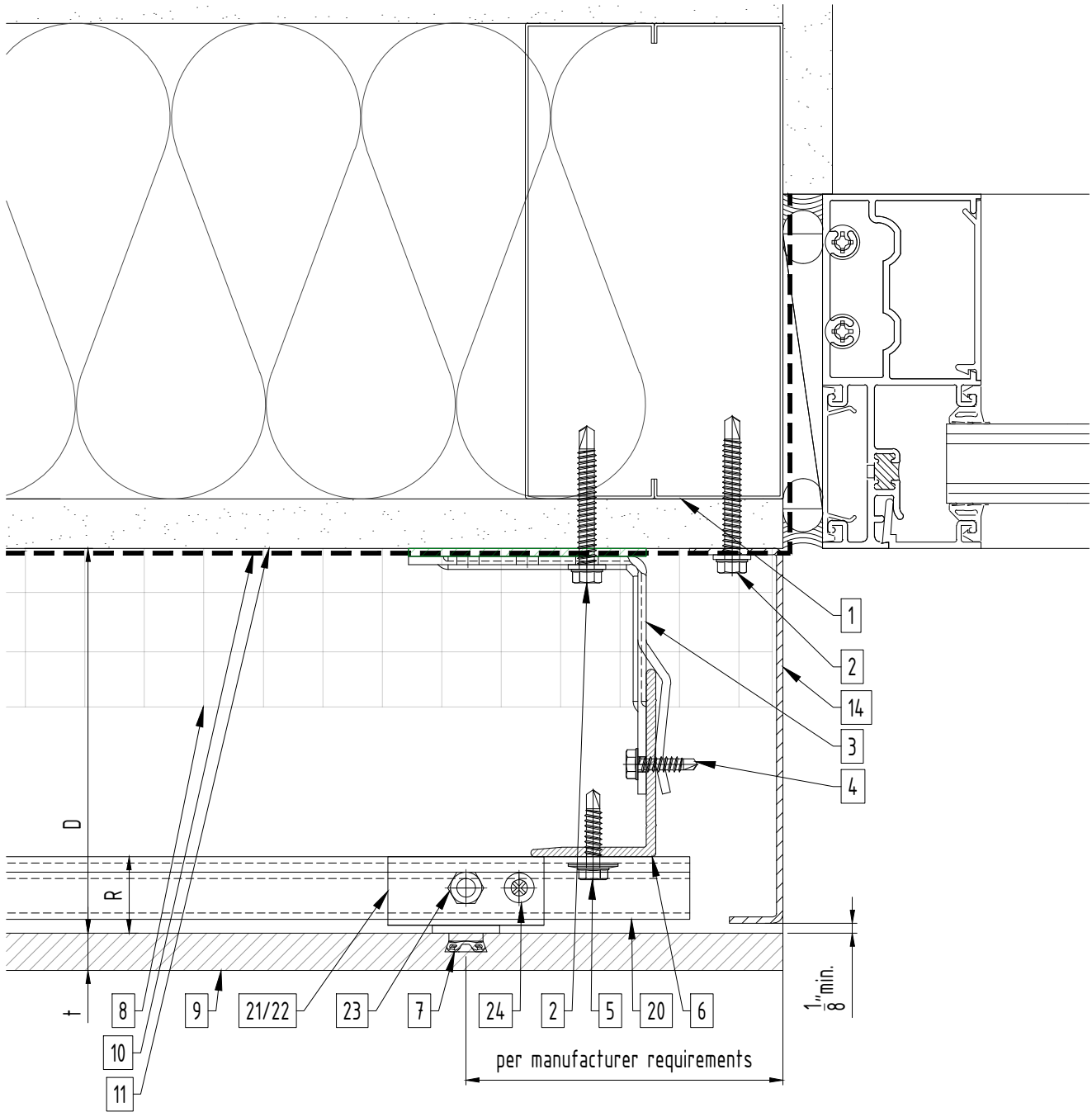
D - System depth
 t - Panel thickness
 R - C-carrier rail and C-hanger

- * Ventilation will vary based on insulation depth.
- * Minimum ventilation requirement should be qualified by panel manufacturer.
- * System may be installed over steel studs, wood studs, CMU or concrete substrates (with use of appropriate perimeter anchors).
- * One of adjustable C-hangers per panel to be fixed fixing screw $\frac{3}{16} \times 1$ "
- * NBEC - Not by EcoCladding.



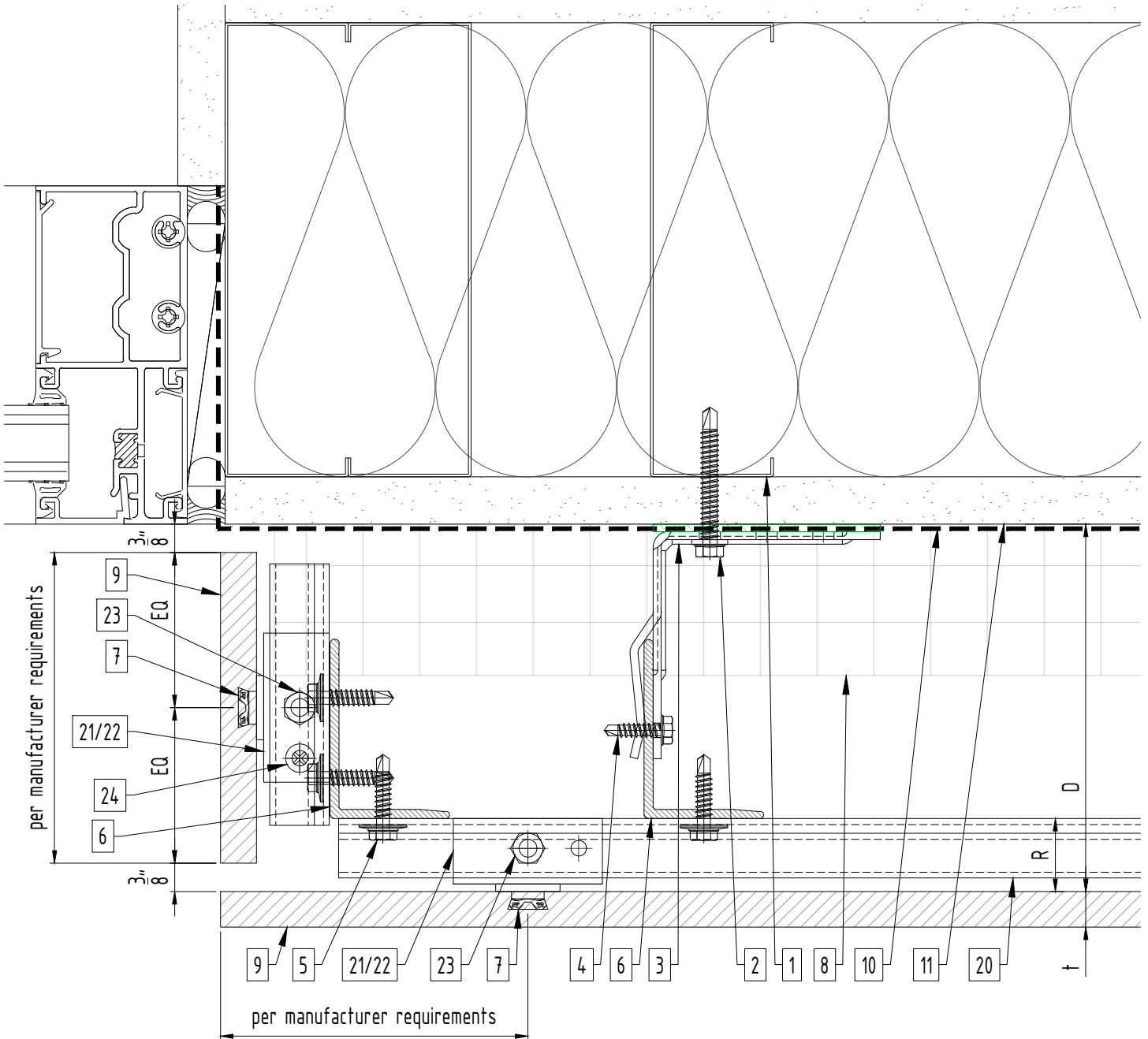
Legend			
1. Steel stud (16 GA typical) (NBEC)	11. Exterior wall (NBEC)	21. C-hanger, adjustable	* Ventilation will vary based on insulation depth. * Minimum ventilation requirement should be qualified by panel manufacturer. * System may be installed over steel studs, wood studs, CMU or concrete substrates (with use of appropriate perimeter anchors). * One of adjustable C-hangers per panel to be fixed fixing screw 3/16" x 1" * NBEC - Not by EcoCladding.
2. Perimeter anchor (NBEC)	12. Outer corner closure (NBEC)	22. C-hanger, non-adjustable	
3. Sigma wall bracket	13. Inner corner closure (NBEC)	23. Leveling bolt M6	
4. st/st self-drilling screw $\frac{3}{16} \times \frac{3}{4}$ "	14. Jamb closure (NBEC)	24. Fixing screw $\frac{3}{16} \times 1$ "	
5. st/st self-drilling screw $\frac{1}{4} \times 1$ "	15. Horizontal L-profile	25. Rivet	
6. Vertical L-profile	16. Coping (NBEC)	26. Perforated closure	
7. Fischer anchor	17. Perforated window head closure (NBEC)		
8. Insulation (NBEC)	18. Window sill (NBEC)		
9. Panel	19. Perforated base closure (NBEC)		
10. A/V barrier (NBEC)	20. C-carrier rail		
		D - System depth t - Panel thickness R - C-carrier rail and C-hanger	

Window jamb (option 1)



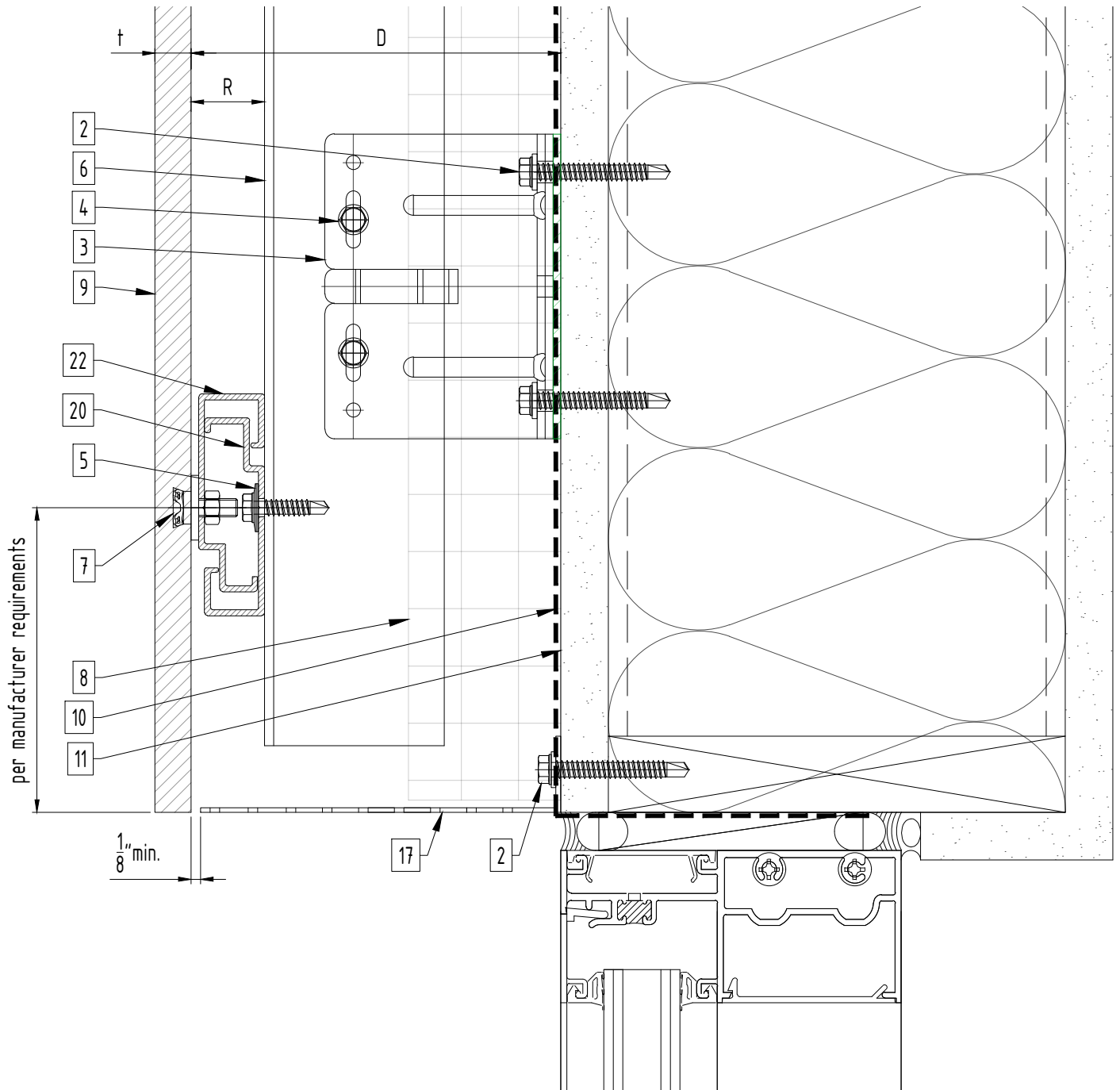
Legend			
1. Steel stud (16 GA typical) (NBEC)	11. Exterior wall (NBEC)	21. C-hanger, adjustable	* Ventilation will vary based on insulation depth. * Minimum ventilation requirement should be qualified by panel manufacturer. * System may be installed over steel studs, wood studs, CMU or concrete substrates (with use of appropriate perimeter anchors). * One of adjustable C-hangers per panel to be fixed fixing screw 3/16" x 1" * NBEC - Not by EcoCladding.
2. Perimeter anchor (NBEC)	12. Outer corner closure (NBEC)	22. C-hanger, non-adjustable	
3. Sigma wall bracket	13. Inner corner closure (NBEC)	23. Leveling bolt M6	
4. st/st self-drilling screw $\frac{3}{16} \times \frac{3}{4}$ "	14. Jamb closure (NBEC)	24. Fixing screw $\frac{3}{16} \times 1$ "	
5. st/st self-drilling screw $\frac{1}{4} \times 1$ "	15. Horizontal L-profile	25. Rivet	
6. Vertical L-profile	16. Coping (NBEC)	26. Perforated closure	
7. Fischer anchor	17. Perforated window head closure (NBEC)		
8. Insulation (NBEC)	18. Window sill (NBEC)	D - System depth	
9. Panel	19. Perforated base closure (NBEC)	t - Panel thickness	
10. A/V barrier (NBEC)	20. C-carrier rail	R - C-carrier rail and C-hanger	

Window jamb (option 2)

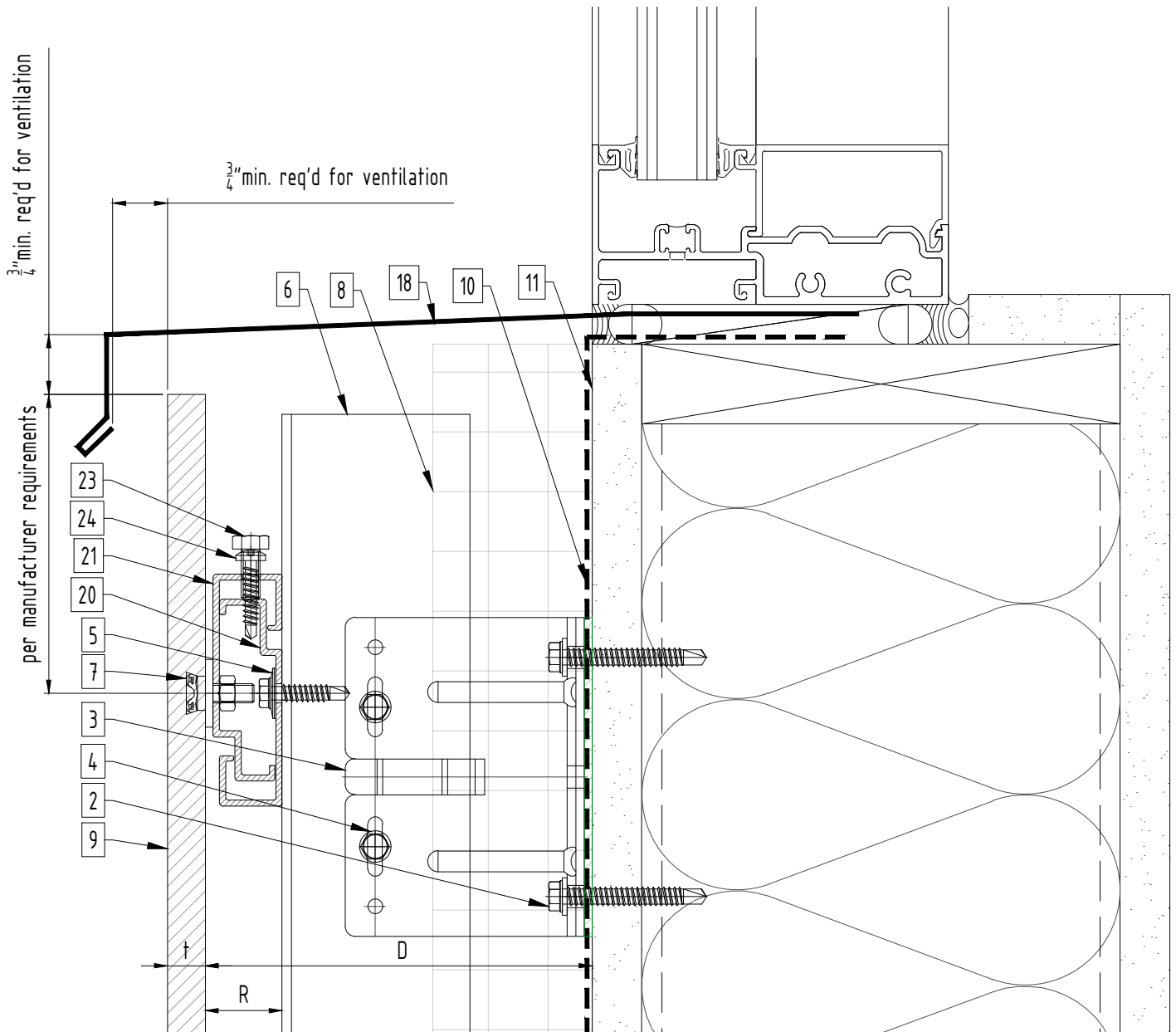


Legend			
1. Steel stud (16 GA typical) (NBEC)	11. Exterior wall (NBEC)	21. C-hanger, adjustable	* Ventilation will vary based on insulation depth. * Minimum ventilation requirement should be qualified by panel manufacturer. * System may be installed over steel studs, wood studs, CMU or concrete substrates (with use of appropriate perimeter anchors). * One of adjustable C-hangers per panel to be fixed fixing screw 3/16" x 1" * NBEC - Not by EcoCladding.
2. Perimeter anchor (NBEC)	12. Outer corner closure (NBEC)	22. C-hanger, non-adjustable	
3. Sigma wall bracket	13. Inner corner closure (NBEC)	23. Leveling bolt M6	
4. st/st self-drilling screw $\frac{3}{16} \times \frac{3}{4}$ "	14. Jamb closure (NBEC)	24. Fixing screw $\frac{3}{16} \times 1"$	
5. st/st self-drilling screw $\frac{1}{4} \times 1"$	15. Horizontal L-profile	25. Rivet	
6. Vertical L-profile	16. Coping (NBEC)	26. Perforated closure	
7. Fischer anchor	17. Perforated window head closure (NBEC)		
8. Insulation (NBEC)	18. Window sill (NBEC)		
9. Panel	19. Perforated base closure (NBEC)		
10. A/V barrier (NBEC)	20. C-carrier rail		
		D - System depth	
		t - Panel thickness	
		R - C-carrier rail and C-hanger	

Window head (option 1)

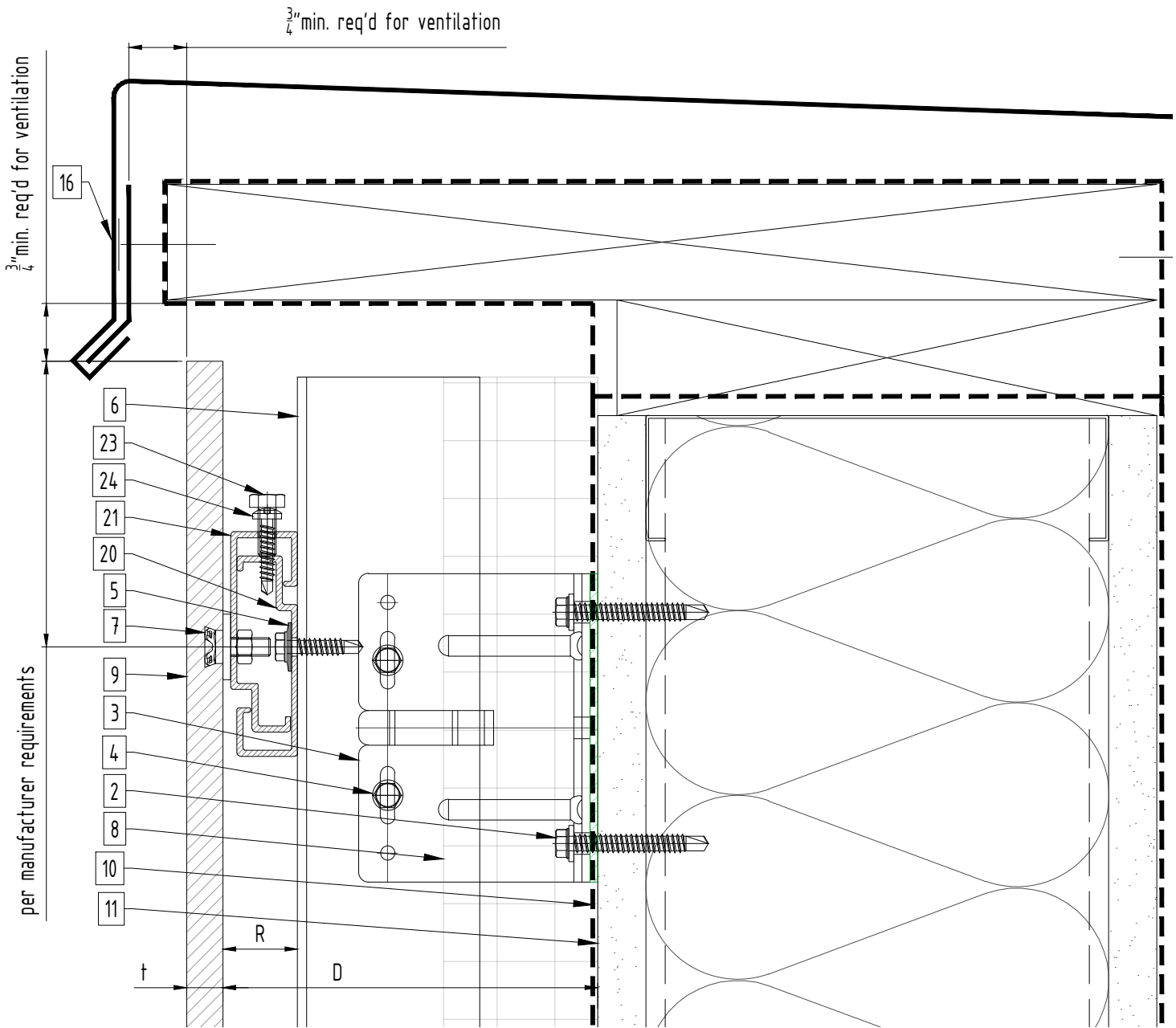


Legend			
1. Steel stud (16 GA typical) (NBEC)	11. Exterior wall (NBEC)	21. C-hanger, adjustable	* Ventilation will vary based on insulation depth. * Minimum ventilation requirement should be qualified by panel manufacturer. * System may be installed over steel studs, wood studs, CMU or concrete substrates (with use of appropriate perimeter anchors). * One of adjustable C-hangers per panel to be fixed fixing screw 3/16"x1" * NBEC - Not by EcoCladding.
2. Perimeter anchor (NBEC)	12. Outer corner closure (NBEC)	22. C-hanger, non-adjustable	
3. Sigma wall bracket	13. Inner corner closure (NBEC)	23. Leveling bolt M6	
4. st/st self-drilling screw $\frac{3}{16} \times \frac{3}{4}$ "	14. Jamb closure (NBEC)	24. Fixing screw $\frac{3}{16} \times 1$ "	
5. st/st self-drilling screw $\frac{1}{4} \times 1$ "	15. Horizontal L-profile	25. Rivet	
6. Vertical L-profile	16. Coping (NBEC)	26. Perforated closure	
7. Fischer anchor	17. Perforated window head closure (NBEC)		
8. Insulation (NBEC)	18. Window sill (NBEC)		
9. Panel	19. Perforated base closure (NBEC)		
10. A/V barrier (NBEC)	20. C-carrier rail		
		D - System depth t - Panel thickness R - C-carrier rail and C-hanger	



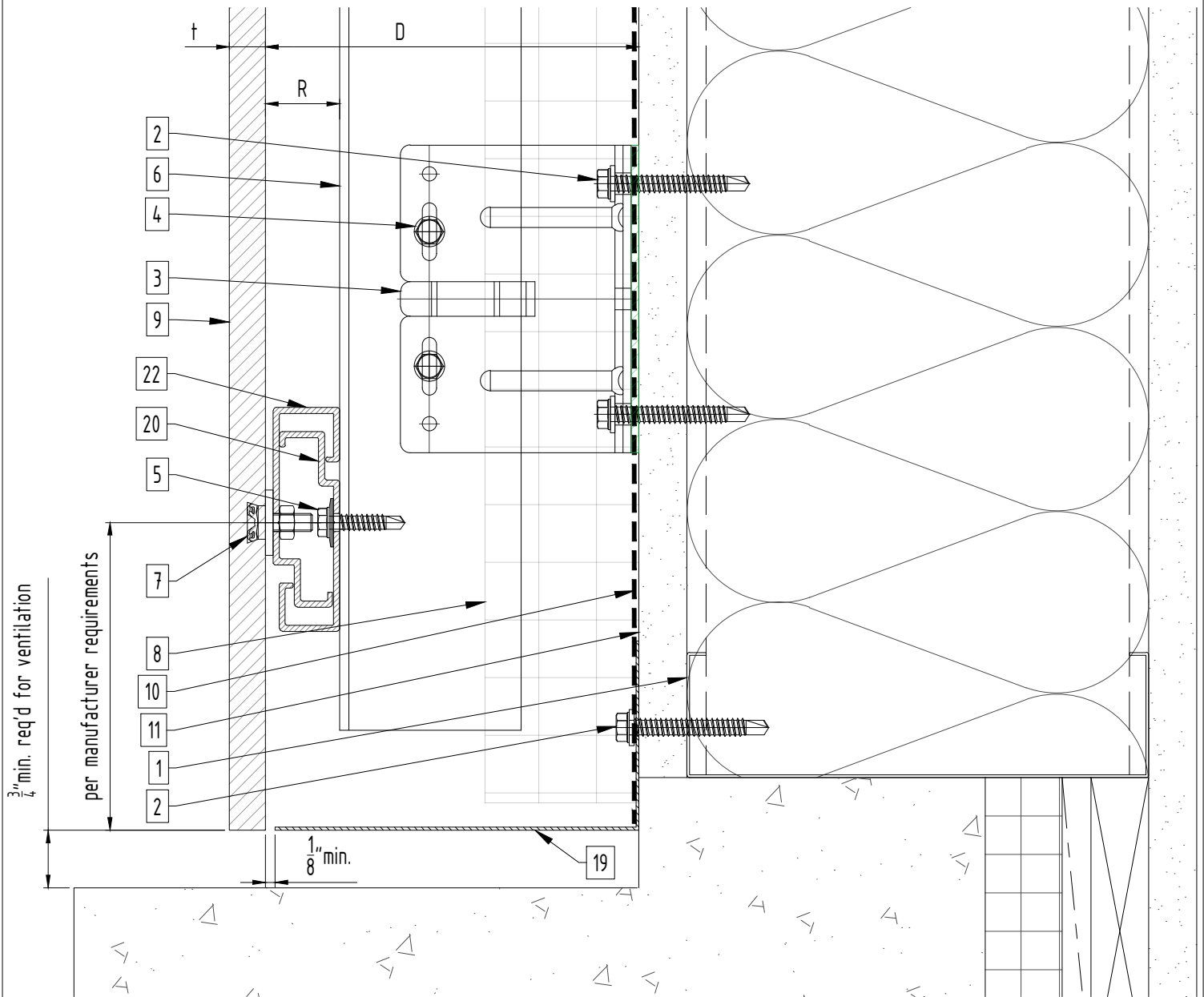
Legend			
1. Steel stud (16 GA typical) (NBEC)	11. Exterior wall (NBEC)	21. C-hanger, adjustable	* Ventilation will vary based on insulation depth. * Minimum ventilation requirement should be qualified by panel manufacturer. * System may be installed over steel studs, wood studs, CMU or concrete substrates (with use of appropriate perimeter anchors). * One of adjustable C-hangers per panel to be fixed fixing screw 3/16" x 1" * NBEC - Not by EcoCladding.
2. Perimeter anchor (NBEC)	12. Outer corner closure (NBEC)	22. C-hanger, non-adjustable	
3. Sigma wall bracket	13. Inner corner closure (NBEC)	23. Leveling bolt M6	
4. st/st self-drilling screw $\frac{3}{16} \times \frac{3}{4}$ "	14. Jamb closure (NBEC)	24. Fixing screw $\frac{3}{16} \times 1$ "	
5. st/st self-drilling screw $\frac{1}{4} \times 1$ "	15. Horizontal L-profile	25. Rivet	
6. Vertical L-profile	16. Coping (NBEC)	26. Perforated closure	
7. Fischer anchor	17. Perforated window head closure (NBEC)		
8. Insulation (NBEC)	18. Window sill (NBEC)		
9. Panel	19. Perforated base closure (NBEC)		
10. A/V barrier (NBEC)	20. C-carrier rail		
		D - System depth	
		t - Panel thickness	
		R - C-carrier rail and C-hanger	

Coping detail



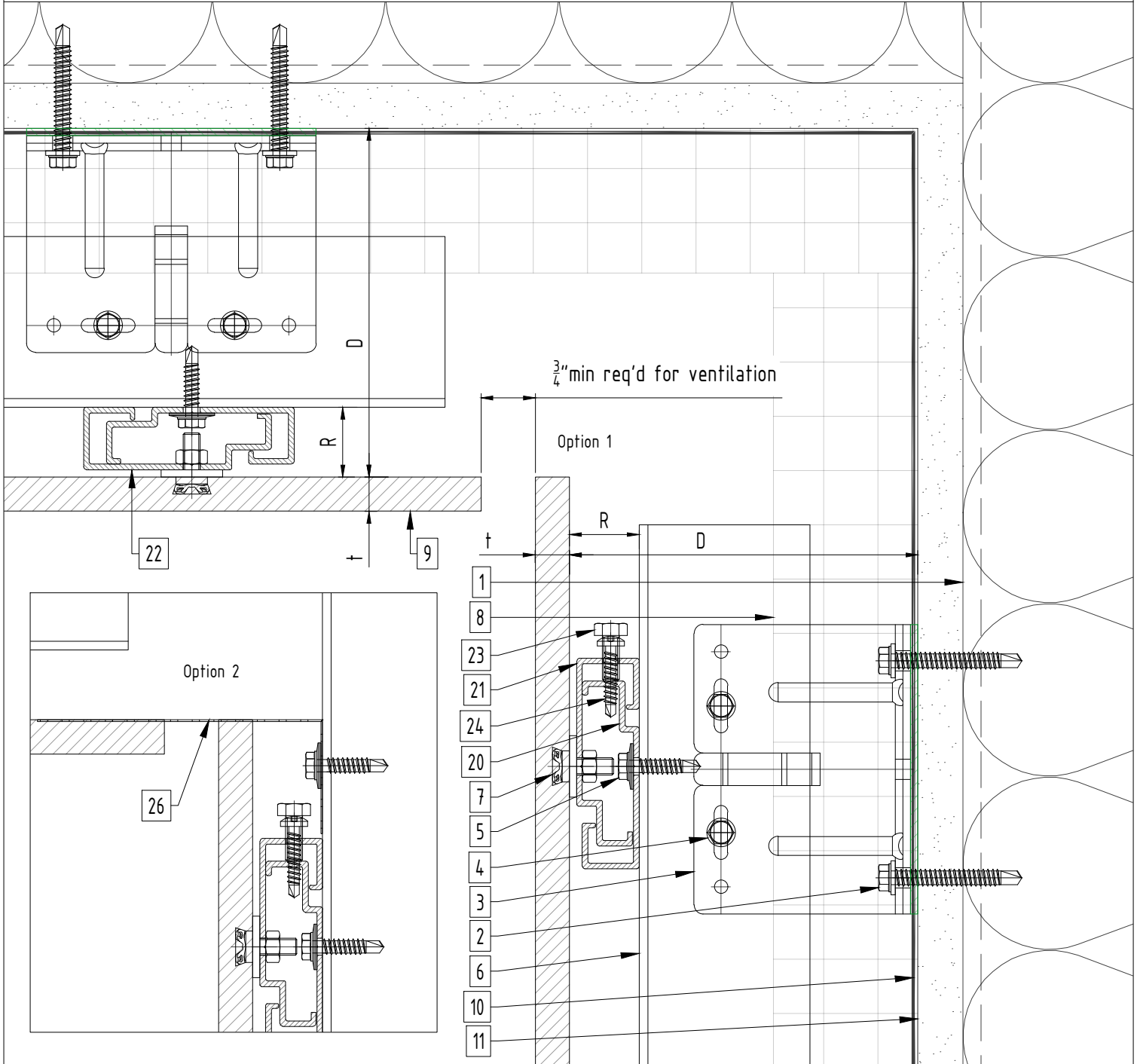
Legend			
1. Steel stud (16 GA typical) (NBEC)	11. Exterior wall (NBEC)	21. C-hanger, adjustable	* Ventilation will vary based on insulation depth. * Minimum ventilation requirement should be qualified by panel manufacturer. * System may be installed over steel studs, wood studs, CMU or concrete substrates (with use of appropriate perimeter anchors). * One of adjustable C-hangers per panel to be fixed fixing screw 3/16" x 1" * NBEC - Not by EcoCladding.
2. Perimeter anchor (NBEC)	12. Outer corner closure (NBEC)	22. C-hanger, non-adjustable	
3. Sigma wall bracket	13. Inner corner closure (NBEC)	23. Leveling bolt M6	
4. st/st self-drilling screw $\frac{3}{16} \times \frac{3}{4}$ "	14. Jamb closure (NBEC)	24. Fixing screw $\frac{3}{16} \times 1"$	
5. st/st self-drilling screw $\frac{1}{4} \times 1"$	15. Horizontal L-profile	25. Rivet	
6. Vertical L-profile	16. Coping (NBEC)	26. Perforated closure	
7. Fischer anchor	17. Perforated window head closure (NBEC)		
8. Insulation (NBEC)	18. Window sill (NBEC)		
9. Panel	19. Perforated base closure (NBEC)		
10. A/V barrier (NBEC)	20. C-carrier rail		
		D - System depth	
		t - Panel thickness	
		R - C-carrier rail and C-hanger	

Base detail



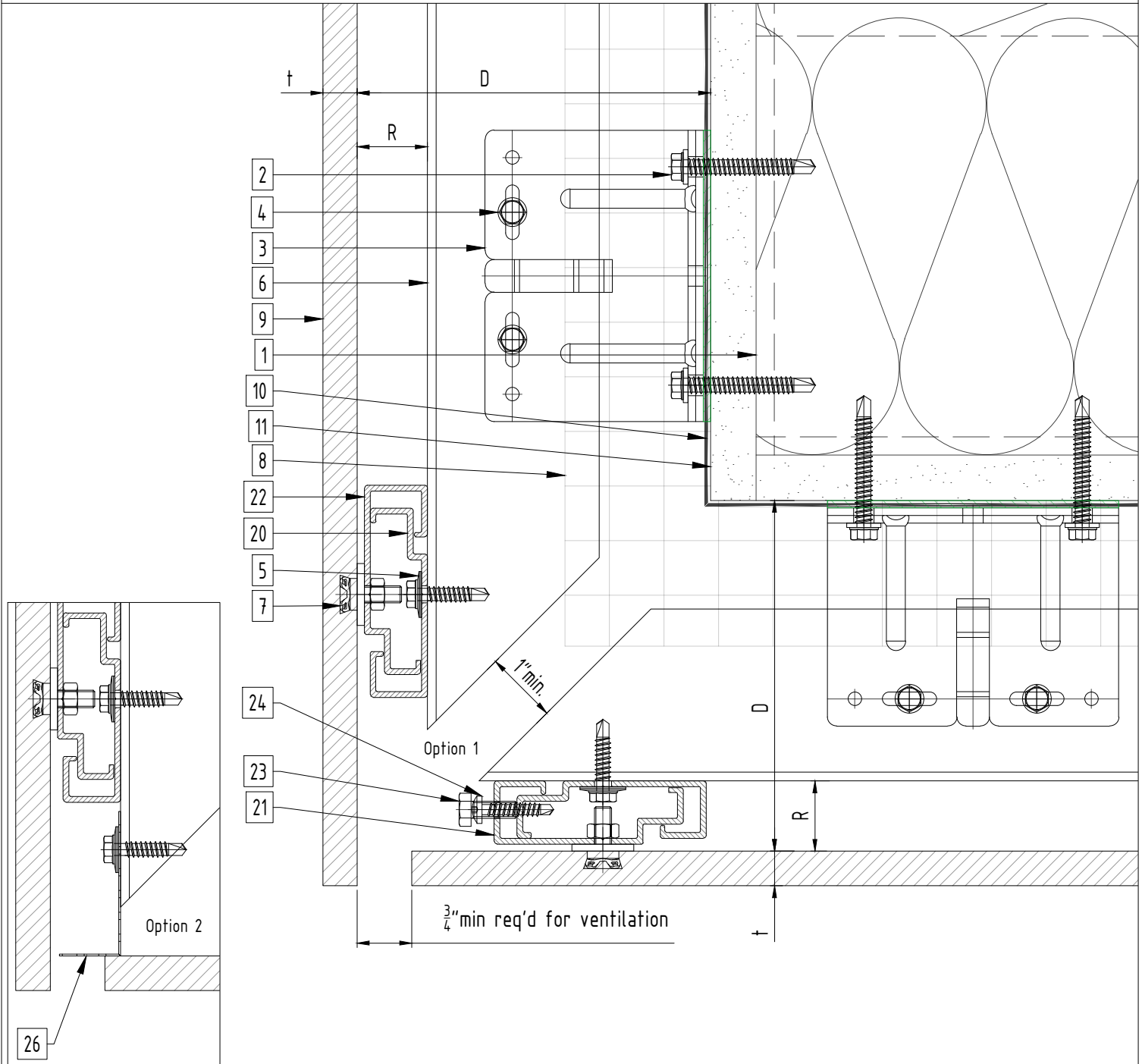
Legend			
1. Steel stud (16 GA typical) (NBEC)	11. Exterior wall (NBEC)	21. C-hanger, adjustable	* Ventilation will vary based on insulation depth. * Minimum ventilation requirement should be qualified by panel manufacturer. * System may be installed over steel studs, wood studs, CMU or concrete substrates (with use of appropriate perimeter anchors). * One of adjustable C-hangers per panel to be fixed fixing screw 3/16" x 1" * NBEC - Not by EcoCladding.
2. Perimeter anchor (NBEC)	12. Outer corner closure (NBEC)	22. C-hanger, non-adjustable	
3. Sigma wall bracket	13. Inner corner closure (NBEC)	23. Leveling bolt M6	
4. st/st self-drilling screw $\frac{3}{16} \times \frac{3}{4}$ "	14. Jamb closure (NBEC)	24. Fixing screw $\frac{3}{16} \times 1$ "	
5. st/st self-drilling screw $\frac{1}{4} \times 1$ "	15. Horizontal L-profile	25. Rivet	
6. Vertical L-profile	16. Coping (NBEC)	26. Perforated closure	
7. Fischer anchor	17. Perforated window head closure (NBEC)		
8. Insulation (NBEC)	18. Window sill (NBEC)		
9. Panel	19. Perforated base closure (NBEC)		
10. A/V barrier (NBEC)	20. C-carrier rail		
		D - System depth t - Panel thickness R - C-carrier rail and C-hanger	

Soffit detail



Legend			
1. Steel stud (16 GA typical) (NBEC)	11. Exterior wall (NBEC)	21. C-hanger, adjustable	* Ventilation will vary based on insulation depth. * Minimum ventilation requirement should be qualified by panel manufacturer. * System may be installed over steel studs, wood studs, CMU or concrete substrates (with use of appropriate perimeter anchors). * One of adjustable C-hangers per panel to be fixed fixing screw 3/16"x1" * NBEC - Not by EcoCladding.
2. Perimeter anchor (NBEC)	12. Outer corner closure (NBEC)	22. C-hanger, non-adjustable	
3. Sigma wall bracket	13. Inner corner closure (NBEC)	23. Leveling bolt M6	
4. st/st self-drilling screw $\frac{3}{16} \times \frac{3}{4}$ "	14. Jamb closure (NBEC)	24. Fixing screw $\frac{3}{16} \times 1"$	
5. st/st self-drilling screw $\frac{1}{4} \times 1"$	15. Horizontal L-profile	25. Rivet	
6. Vertical L-profile	16. Coping (NBEC)	26. Perforated closure	
7. Fischer anchor	17. Perforated window head closure (NBEC)		
8. Insulation (NBEC)	18. Window sill (NBEC)		
9. Panel	19. Perforated base closure (NBEC)		
10. A/V barrier (NBEC)	20. C-carrier rail		
		D - System depth	
		t - Panel thickness	
		R - C-carrier rail and C-hanger	

Soffit detail 2



Legend			
1. Steel stud (16 GA typical) (NBEC)	11. Exterior wall (NBEC)	21. C-hanger, adjustable	* Ventilation will vary based on insulation depth. * Minimum ventilation requirement should be qualified by panel manufacturer. * System may be installed over steel studs, wood studs, CMU or concrete substrates (with use of appropriate perimeter anchors). * One of adjustable C-hangers per panel to be fixed fixing screw 3/16"x1" * NBEC - Not by EcoCladding.
2. Perimeter anchor (NBEC)	12. Outer corner closure (NBEC)	22. C-hanger, non-adjustable	
3. Sigma wall bracket	13. Inner corner closure (NBEC)	23. Leveling bolt M6	
4. st/st self-drilling screw $\frac{3}{16} \times \frac{3}{4}$ "	14. Jamb closure (NBEC)	24. Fixing screw $\frac{3}{16} \times 1"$	
5. st/st self-drilling screw $\frac{1}{4} \times 1"$	15. Horizontal L-profile	25. Rivet	
6. Vertical L-profile	16. Coping (NBEC)	26. Perforated closure	
7. Fischer anchor	17. Perforated window head closure (NBEC)		
8. Insulation (NBEC)	18. Window sill (NBEC)		
9. Panel	19. Perforated base closure (NBEC)		
10. A/V barrier (NBEC)	20. C-carrier rail		
		D - System depth t - Panel thickness R - C-carrier rail and C-hanger	