

System depth

Bracket	nominal D System depth	min. D system depth	max. D system depth	R	t panel thickness
Sigma U.02	4 ¹ / ₄ "	3 ⁵ / ₈ "	4 ⁷ / ₈ "	1 ³ / ₁₆ "	varies
Sigma U.03	5 ¹ / ₈ "	4 ¹ / ₂ "	5 ⁷ / ₈ "	1 ³ / ₁₆ "	varies
Sigma U.04	6 ¹ / ₈ "	5 ³ / ₈ "	6 ⁷ / ₈ "	1 ³ / ₁₆ "	varies
Sigma U.05	7 ¹ / ₈ "	6 ³ / ₈ "	7 ⁷ / ₈ "	1 ³ / ₁₆ "	varies
Sigma U.06	8 ¹ / ₈ "	7 ³ / ₈ "	8 ⁷ / ₈ "	1 ³ / ₁₆ "	varies
Sigma U.07	9 ¹ / ₈ "	8 ³ / ₈ "	9 ⁷ / ₈ "	1 ³ / ₁₆ "	varies
Sigma U.08	10 ¹ / ₈ "	9 ³ / ₈ "	10 ⁷ / ₈ "	1 ³ / ₁₆ "	varies
Sigma U.09	11 ¹ / ₈ "	10 ³ / ₈ "	11 ⁷ / ₈ "	1 ³ / ₁₆ "	varies
Sigma U.10	12 ¹ / ₈ "	11 ³ / ₈ "	12 ⁷ / ₈ "	1 ³ / ₁₆ "	varies
Sigma U.11	13 ¹ / ₈ "	12 ³ / ₈ "	13 ⁷ / ₈ "	1 ³ / ₁₆ "	varies
Sigma U.12	14 ¹ / ₈ "	13 ³ / ₈ "	14 ⁷ / ₈ "	1 ³ / ₁₆ "	varies

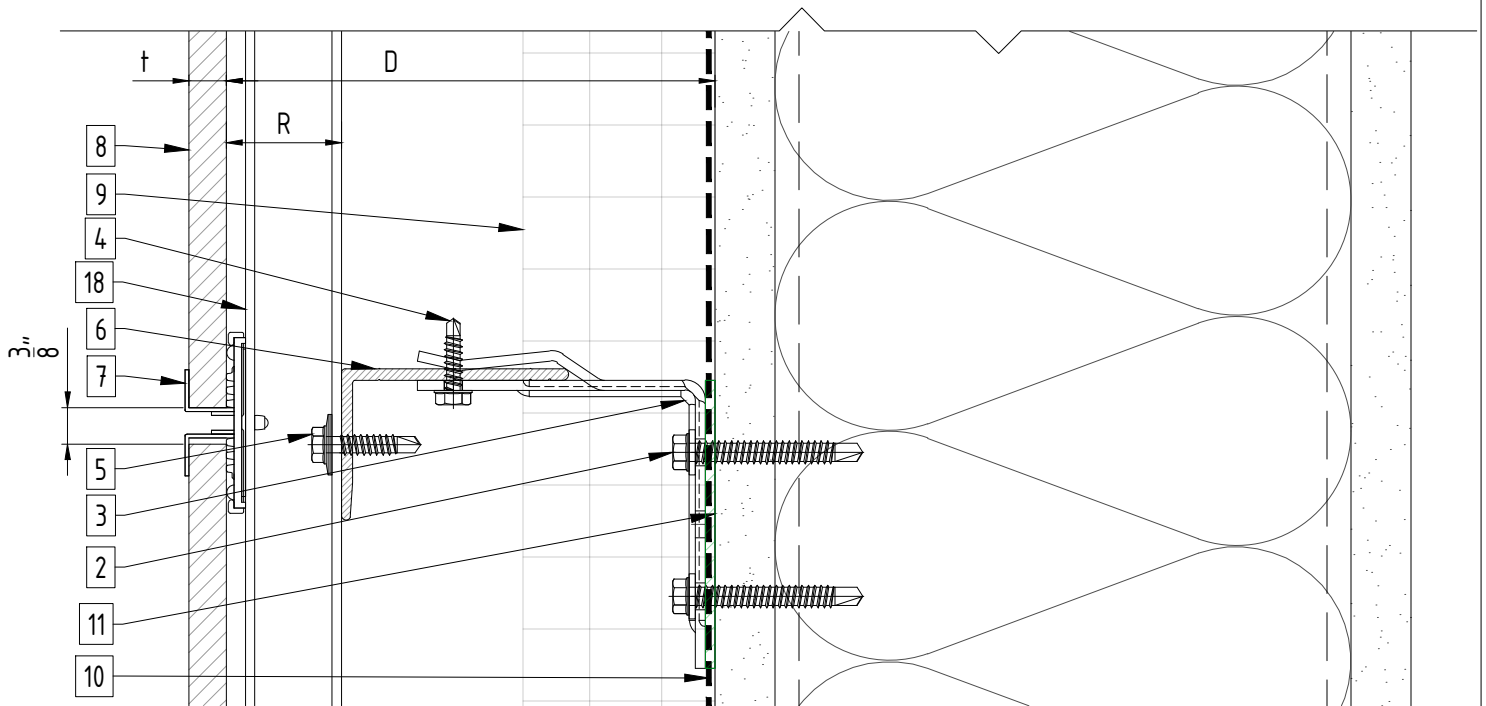
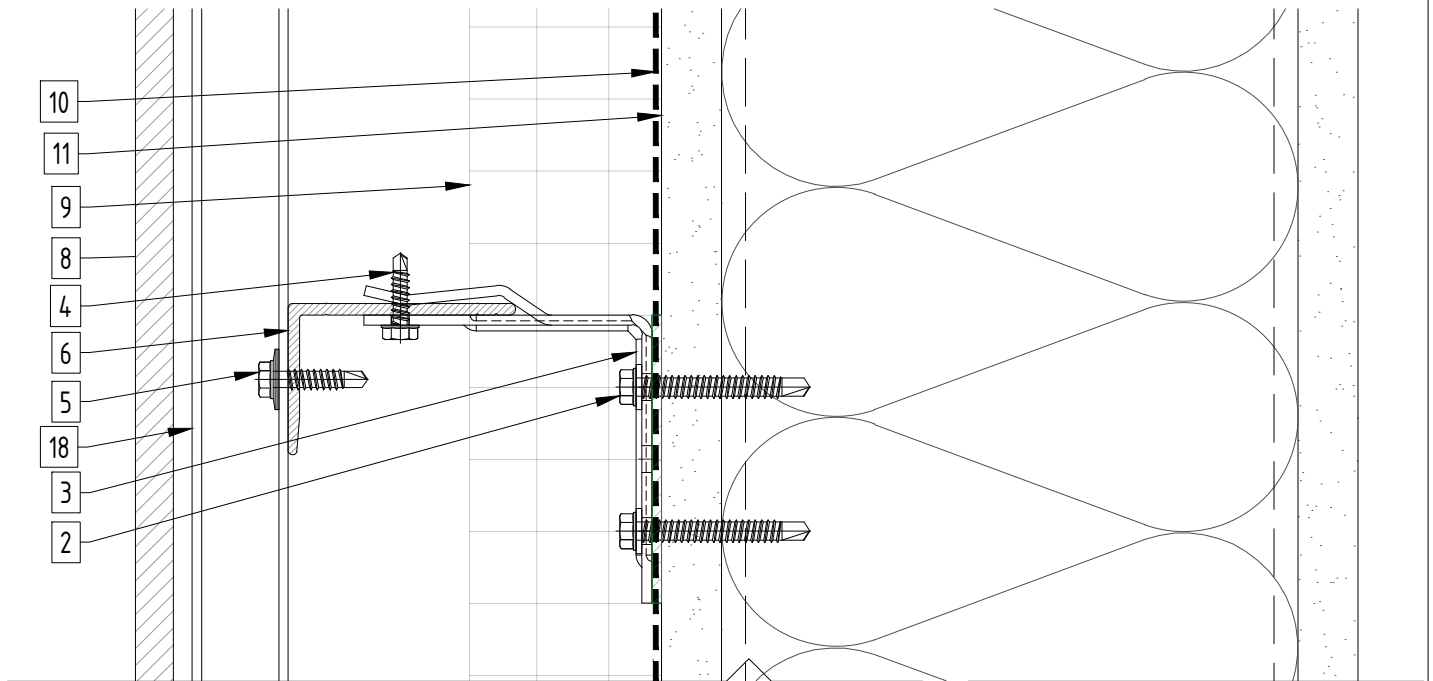
Legend

- 1. Steel stud (16 GA typical) (NBEC)
- 2. Perimeter anchor (NBEC)
- 3. Sigma wall bracket
- 4. st/st self-drilling screw $\frac{3}{16}'' \times \frac{3}{4}''$
- 5. st/st self-drilling screw $\frac{1}{4}'' \times 1''$
- 6. Horizontal L-profile
- 7. Ceramic tile clip
- 8. Ceramic tile
- 9. Insulation (NBEC)
- 10. A/V barrier (NBEC)

- 11. Exterior wall (NBEC)
- 12. Jamb closure (NBEC)
- 13. Vertical L-profile
- 14. Coping (NBEC)
- 15. Perforated window head closure (NBEC)
- 16. Window sill (NBEC)
- 17. Perforated base closure (NBEC)
- 18. Vertical Z-profile
- 19. Perforated closure

D - System depth
 t - Panel thickness
 R - Ceramic tile clip and Z-profile
 * Ventilation will vary based on insulation depth.
 * Minimum ventilation requirement should be qualified by panel manufacturer.
 * System may be installed over steel studs, wood studs, CMU or concrete substrates (with use of appropriate perimeter anchors).
 * NBEC - Not by EcoCladding.

Horizontal joint

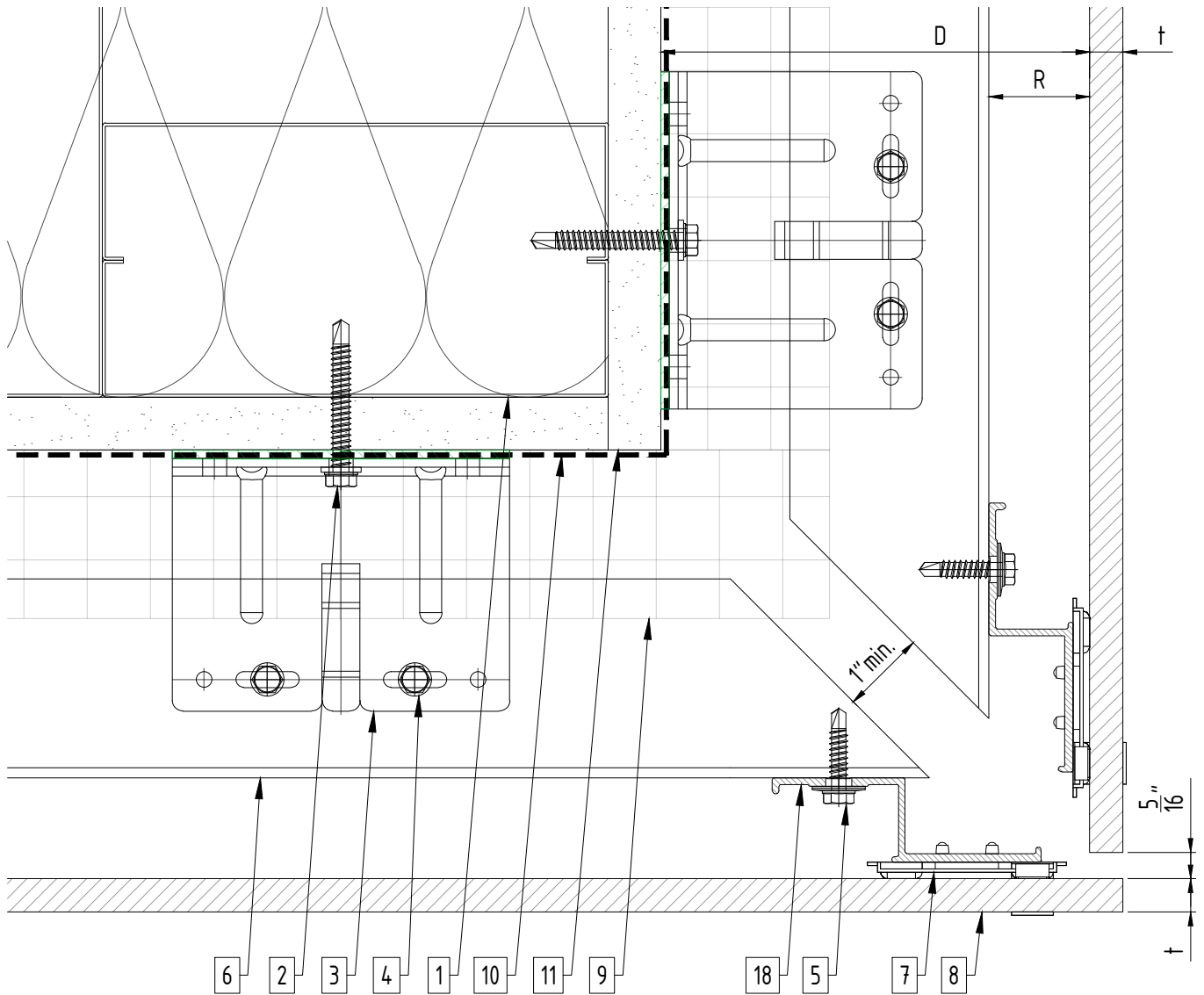


Legend

- 1. Steel stud (16 GA typical) (NBEC)
- 2. Perimeter anchor (NBEC)
- 3. Sigma wall bracket
- 4. st/st self-drilling screw $\frac{3}{16}'' \times \frac{3}{4}''$
- 5. st/st self-drilling screw $\frac{1}{4}'' \times 1''$
- 6. Horizontal L-profile
- 7. Ceramic tile clip
- 8. Ceramic tile
- 9. Insulation (NBEC)
- 10. A/V barrier (NBEC)

- 11. Exterior wall (NBEC)
- 12. Jamb closure (NBEC)
- 13. Vertical L-profile
- 14. Coping (NBEC)
- 15. Perforated window head closure (NBEC)
- 16. Window sill (NBEC)
- 17. Perforated base closure (NBEC)
- 18. Vertical Z-profile
- 19. Perforated closure

- D - System depth
- t - Panel thickness
- R - Ceramic tile clip and Z-profile
- * Ventilation will vary based on insulation depth.
- * Minimum ventilation requirement should be qualified by panel manufacturer.
- * System may be installed over steel studs, wood studs, CMU or concrete substrates (with use of appropriate perimeter anchors).
- * NBEC - Not by EcoCladding.

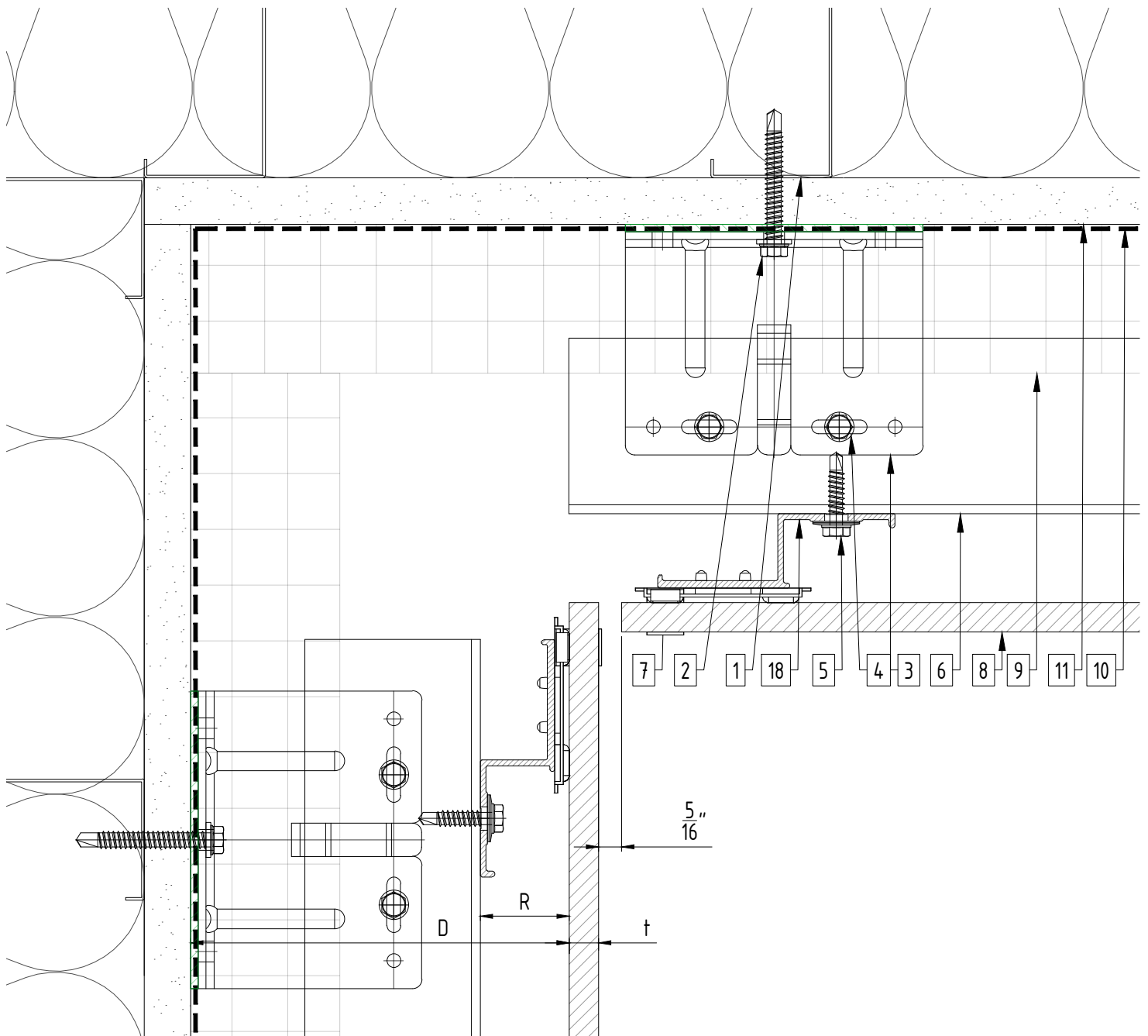


Legend

- 1. Steel stud (16 GA typical) (NBEC)
- 2. Perimeter anchor (NBEC)
- 3. Sigma wall bracket
- 4. st/st self-drilling screw $\frac{3}{16}'' \times \frac{3}{4}''$
- 5. st/st self-drilling screw $\frac{1}{4}'' \times 1''$
- 6. Horizontal L-profile
- 7. Ceramic tile clip
- 8. Ceramic tile
- 9. Insulation (NBEC)
- 10. A/V barrier (NBEC)

- 11. Exterior wall (NBEC)
- 12. Jamb closure (NBEC)
- 13. Vertical L-profile
- 14. Coping (NBEC)
- 15. Perforated window head closure (NBEC)
- 16. Window sill (NBEC)
- 17. Perforated base closure (NBEC)
- 18. Vertical Z-profile
- 19. Perforated closure

D - System depth
 t - Panel thickness
 R - Ceramic tile clip and Z-profile
 * Ventilation will vary based on insulation depth.
 * Minimum ventilation requirement should be qualified by panel manufacturer.
 * System may be installed over steel studs, wood studs, CMU or concrete substrates (with use of appropriate perimeter anchors).
 * NBEC - Not by EcoCladding.



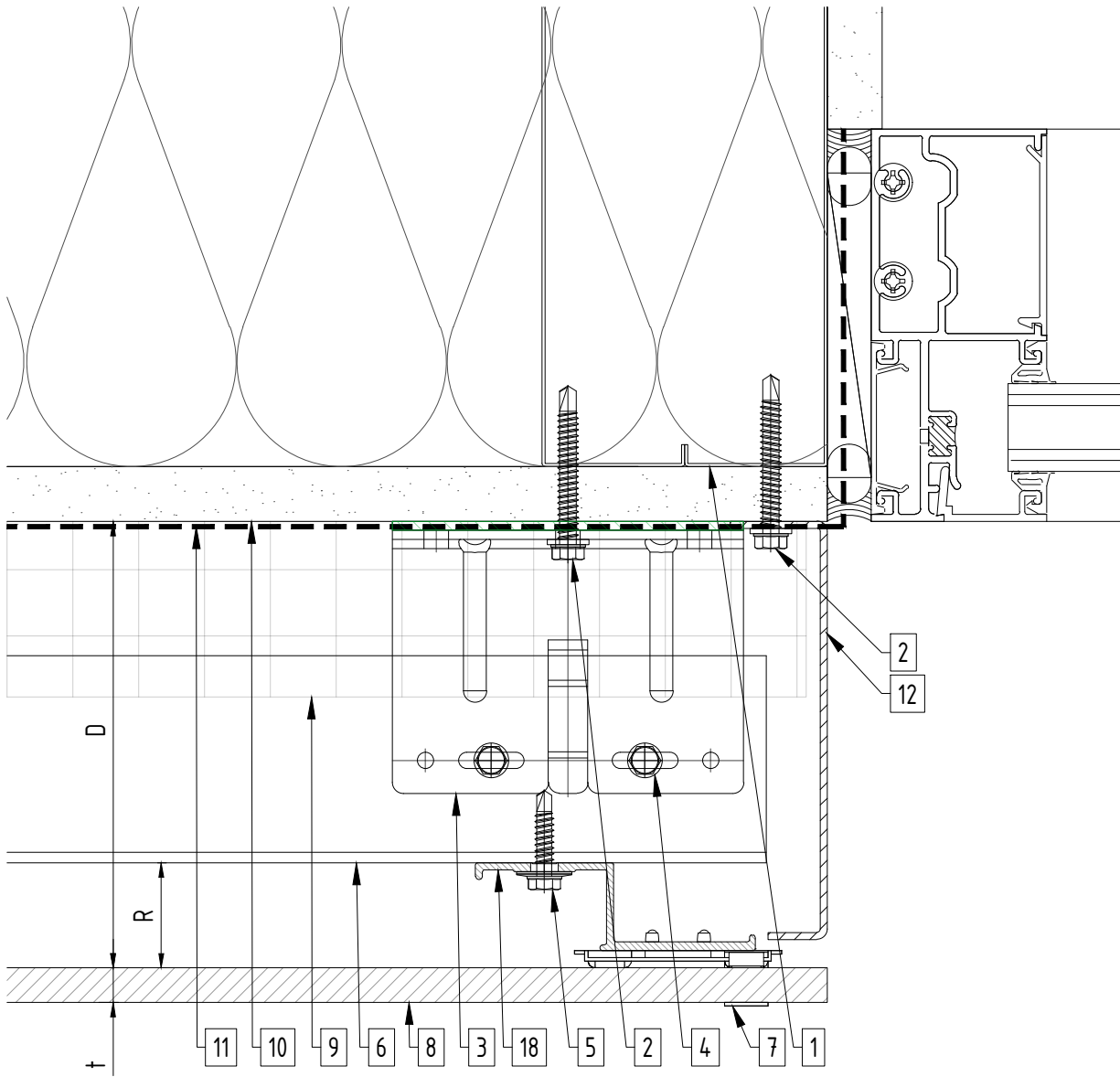
Legend

- 1. Steel stud (16 GA typical) (NBEC)
- 2. Perimeter anchor (NBEC)
- 3. Sigma wall bracket
- 4. st/st self-drilling screw $\frac{3}{16} \times \frac{3}{4}$ "
- 5. st/st self-drilling screw $\frac{1}{4} \times 1$ "
- 6. Horizontal L-profile
- 7. Ceramic tile clip
- 8. Ceramic tile
- 9. Insulation (NBEC)
- 10. A/V barrier (NBEC)

- 11. Exterior wall (NBEC)
- 12. Jamb closure (NBEC)
- 13. Vertical L-profile
- 14. Coping (NBEC)
- 15. Perforated window head closure (NBEC)
- 16. Window sill (NBEC)
- 17. Perforated base closure (NBEC)
- 18. Vertical Z-profile
- 19. Perforated closure

D - System depth
 t - Panel thickness
 R - Ceramic tile clip and Z-profile
 * Ventilation will vary based on insulation depth.
 * Minimum ventilation requirement should be qualified by panel manufacturer.
 * System may be installed over steel studs, wood studs, CMU or concrete substrates (with use of appropriate perimeter anchors).
 * NBEC - Not by EcoCladding.

Window jamb (option 1)

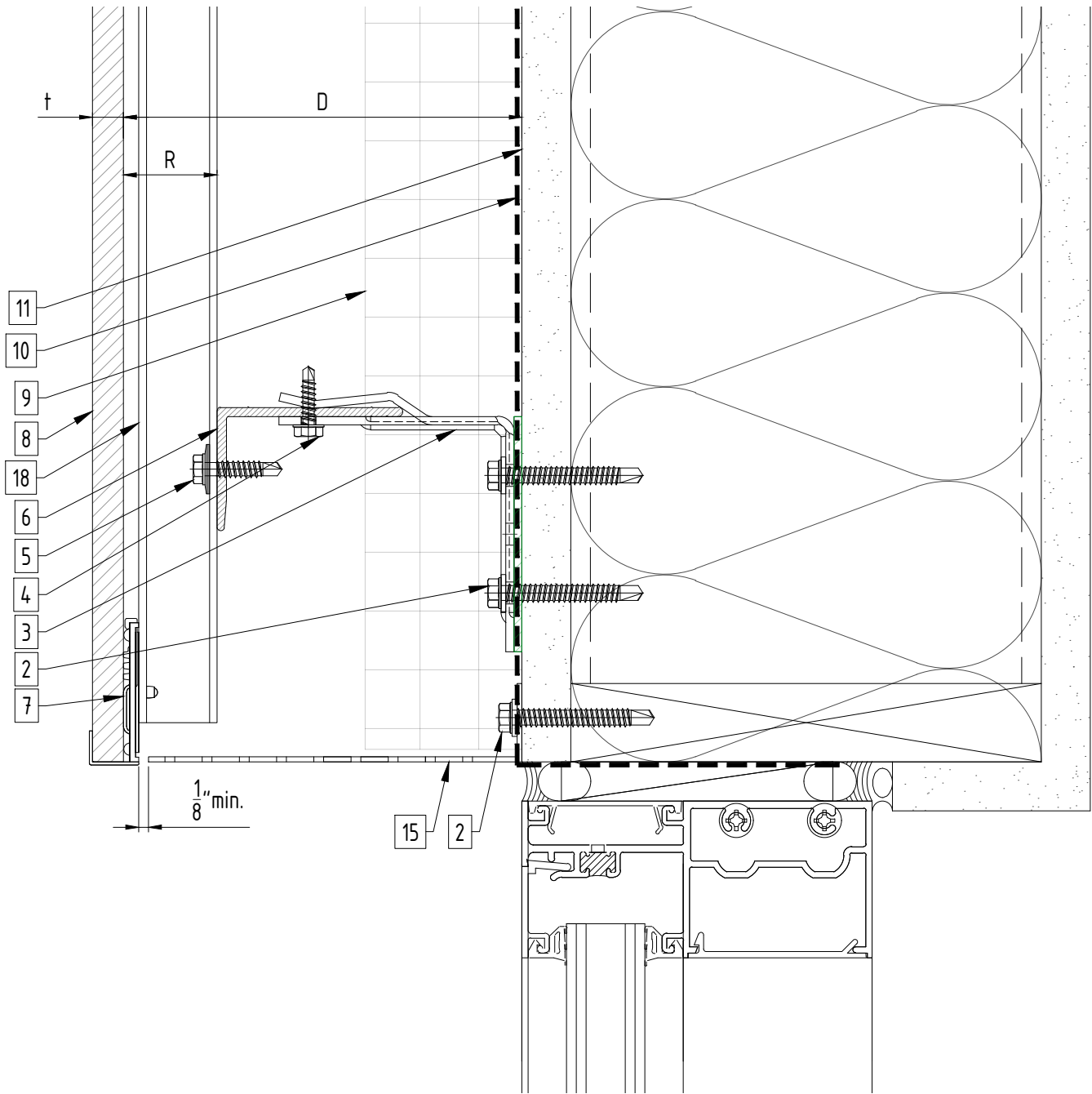


Legend

- 1. Steel stud (16 GA typical) (NBEC)
- 2. Perimeter anchor (NBEC)
- 3. Sigma wall bracket
- 4. st/st self-drilling screw $\frac{3}{16} \times \frac{3}{4}$ "
- 5. st/st self-drilling screw $\frac{1}{4} \times 1$ "
- 6. Horizontal L-profile
- 7. Ceramic tile clip
- 8. Ceramic tile
- 9. Insulation (NBEC)
- 10. A/V barrier (NBEC)

- 11. Exterior wall (NBEC)
- 12. Jamb closure (NBEC)
- 13. Vertical L-profile
- 14. Coping (NBEC)
- 15. Perforated window head closure (NBEC)
- 16. Window sill (NBEC)
- 17. Perforated base closure (NBEC)
- 18. Vertical Z-profile
- 19. Perforated closure

- D - System depth
- t - Panel thickness
- R - Ceramic tile clip and Z-profile
- * Ventilation will vary based on insulation depth.
- * Minimum ventilation requirement should be qualified by panel manufacturer.
- * System may be installed over steel studs, wood studs, CMU or concrete substrates (with use of appropriate perimeter anchors).
- * NBEC - Not by EcoCladding.

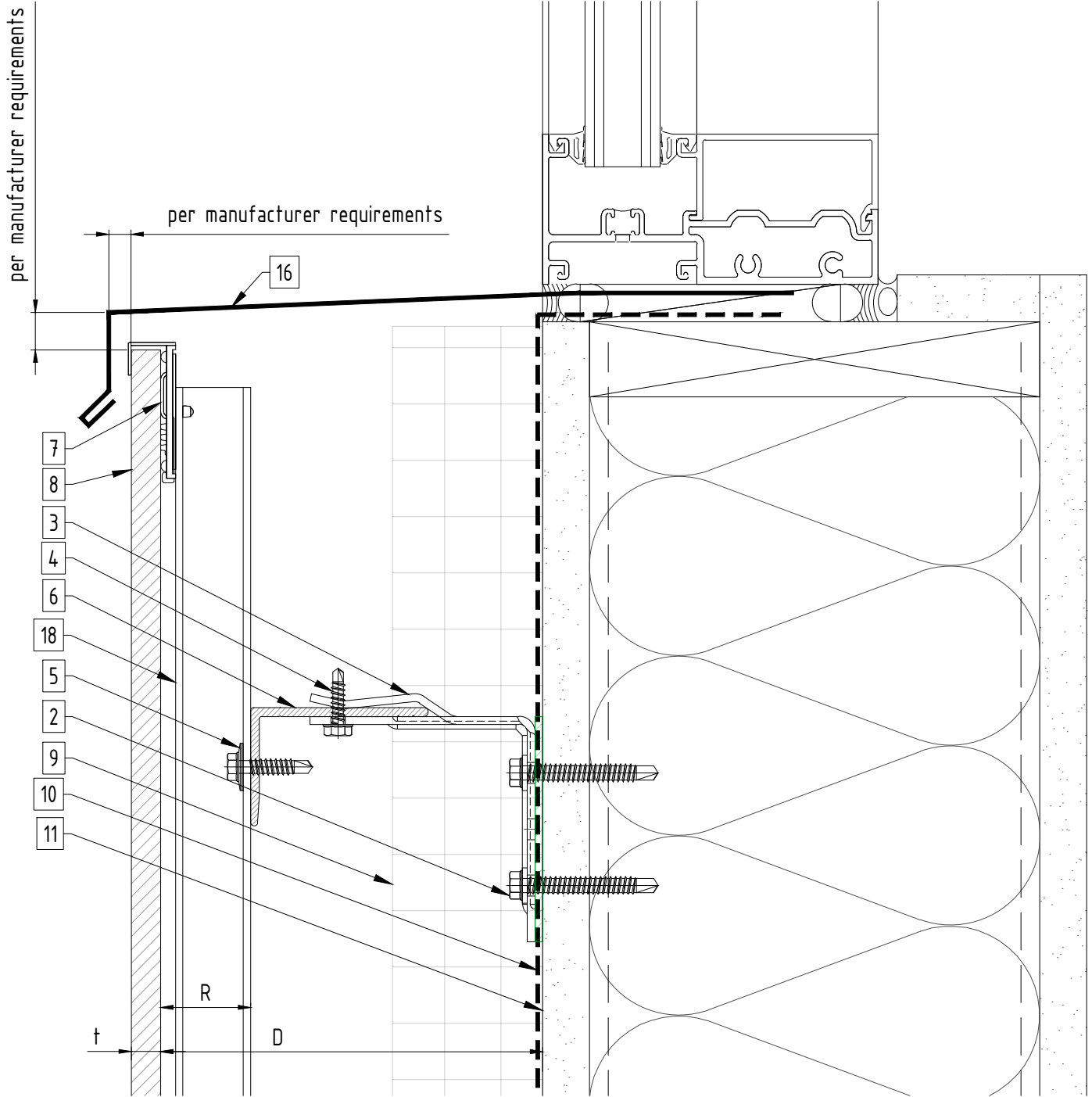


Legend

- 1. Steel stud (16 GA typical) (NBEC)
- 2. Perimeter anchor (NBEC)
- 3. Sigma wall bracket
- 4. st/st self-drilling screw $\frac{3}{16} \times \frac{3}{4}$ "
- 5. st/st self-drilling screw $\frac{1}{4} \times 1$ "
- 6. Horizontal L-profile
- 7. Ceramic tile clip
- 8. Ceramic tile
- 9. Insulation (NBEC)
- 10. A/V barrier (NBEC)

- 11. Exterior wall (NBEC)
- 12. Jamb closure (NBEC)
- 13. Vertical L-profile
- 14. Coping (NBEC)
- 15. Perforated window head closure (NBEC)
- 16. Window sill (NBEC)
- 17. Perforated base closure (NBEC)
- 18. Vertical Z-profile
- 19. Perforated closure

- D - System depth
- t - Panel thickness
- R - Ceramic tile clip and Z-profile
- * Ventilation will vary based on insulation depth.
- * Minimum ventilation requirement should be qualified by panel manufacturer.
- * System may be installed over steel studs, wood studs, CMU or concrete substrates (with use of appropriate perimeter anchors).
- * NBEC - Not by EcoCladding.



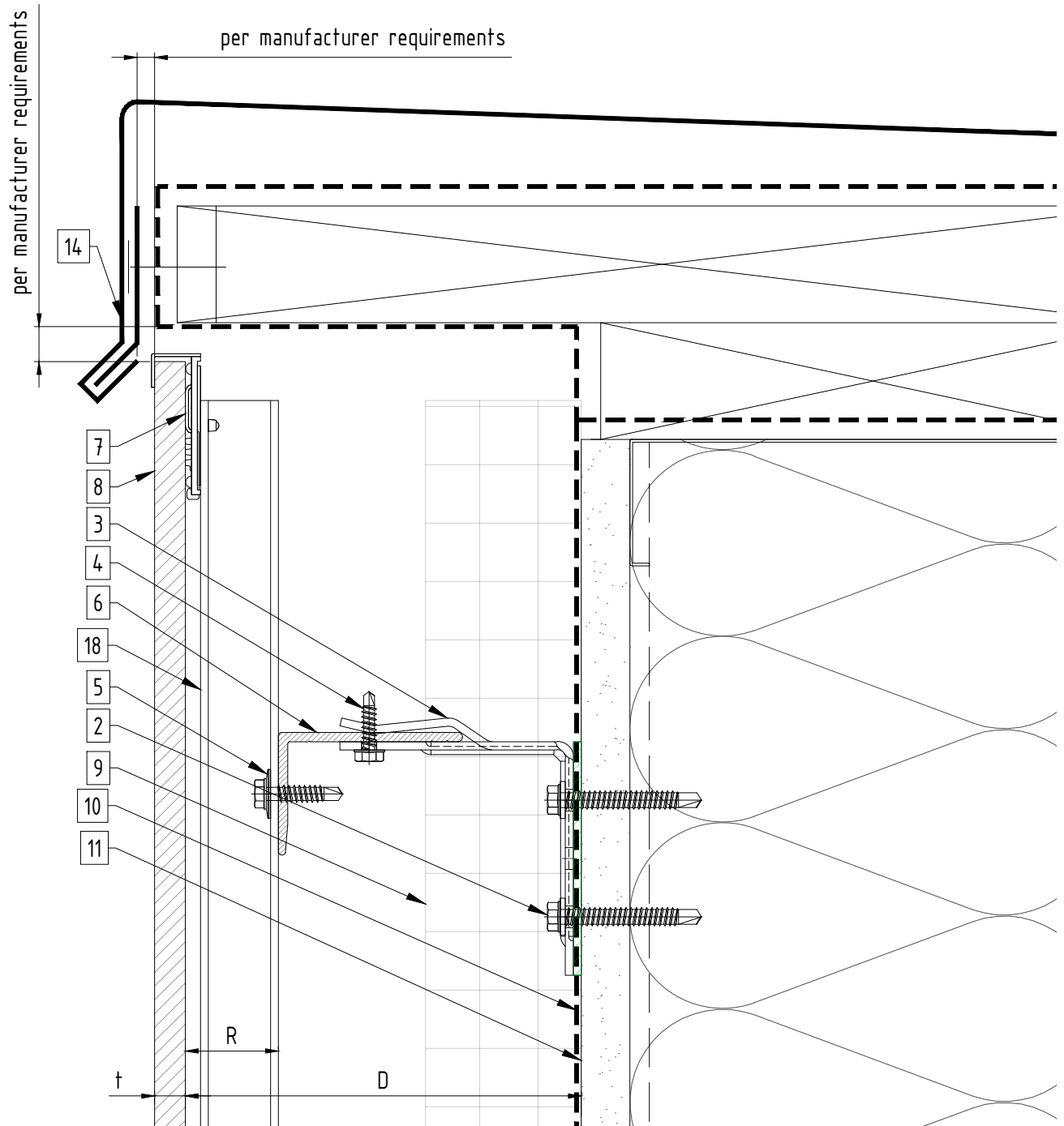
Legend

- 1. Steel stud (16 GA typical) (NBEC)
- 2. Perimeter anchor (NBEC)
- 3. Sigma wall bracket
- 4. st/st self-drilling screw $\frac{3}{16}'' \times \frac{3}{4}''$
- 5. st/st self-drilling screw $\frac{1}{4}'' \times 1''$
- 6. Horizontal L-profile
- 7. Ceramic tile clip
- 8. Ceramic tile
- 9. Insulation (NBEC)
- 10. A/V barrier (NBEC)

- 11. Exterior wall (NBEC)
- 12. Jamb closure (NBEC)
- 13. Vertical L-profile
- 14. Coping (NBEC)
- 15. Perforated window head closure (NBEC)
- 16. Window sill (NBEC)
- 17. Perforated base closure (NBEC)
- 18. Vertical Z-profile
- 19. Perforated closure

- D - System depth
- t - Panel thickness
- R - Ceramic tile clip and Z-profile
- * Ventilation will vary based on insulation depth.
- * Minimum ventilation requirement should be qualified by panel manufacturer.
- * System may be installed over steel studs, wood studs, CMU or concrete substrates (with use of appropriate perimeter anchors).
- * NBEC - Not by EcoCladding.

Coping detail

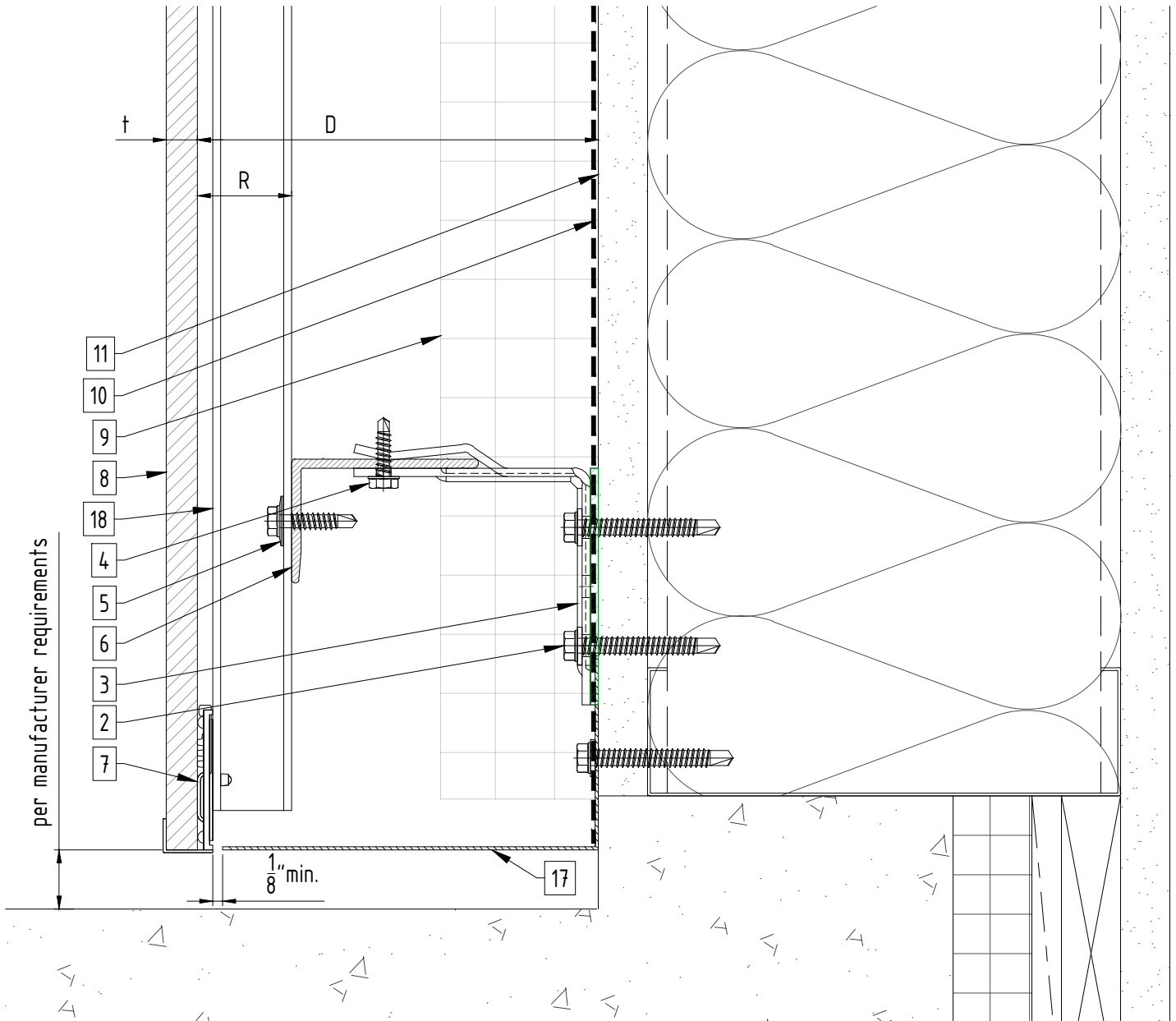


Legend

- 1. Steel stud (16 GA typical) (NBEC)
- 2. Perimeter anchor (NBEC)
- 3. Sigma wall bracket
- 4. st/st self-drilling screw $\frac{3}{16}'' \times \frac{3}{4}''$
- 5. st/st self-drilling screw $\frac{1}{4}'' \times 1''$
- 6. Horizontal L-profile
- 7. Ceramic tile clip
- 8. Ceramic tile
- 9. Insulation (NBEC)
- 10. A/V barrier (NBEC)

- 11. Exterior wall (NBEC)
- 12. Jamb closure (NBEC)
- 13. Vertical L-profile
- 14. Coping (NBEC)
- 15. Perforated window head closure (NBEC)
- 16. Window sill (NBEC)
- 17. Perforated base closure (NBEC)
- 18. Vertical Z-profile
- 19. Perforated closure

- D - System depth
- t - Panel thickness
- R - Ceramic tile clip and Z-profile
- * Ventilation will vary based on insulation depth.
- * Minimum ventilation requirement should be qualified by panel manufacturer.
- * System may be installed over steel studs, wood studs, CMU or concrete substrates (with use of appropriate perimeter anchors).
- * NBEC - Not by EcoCladding.



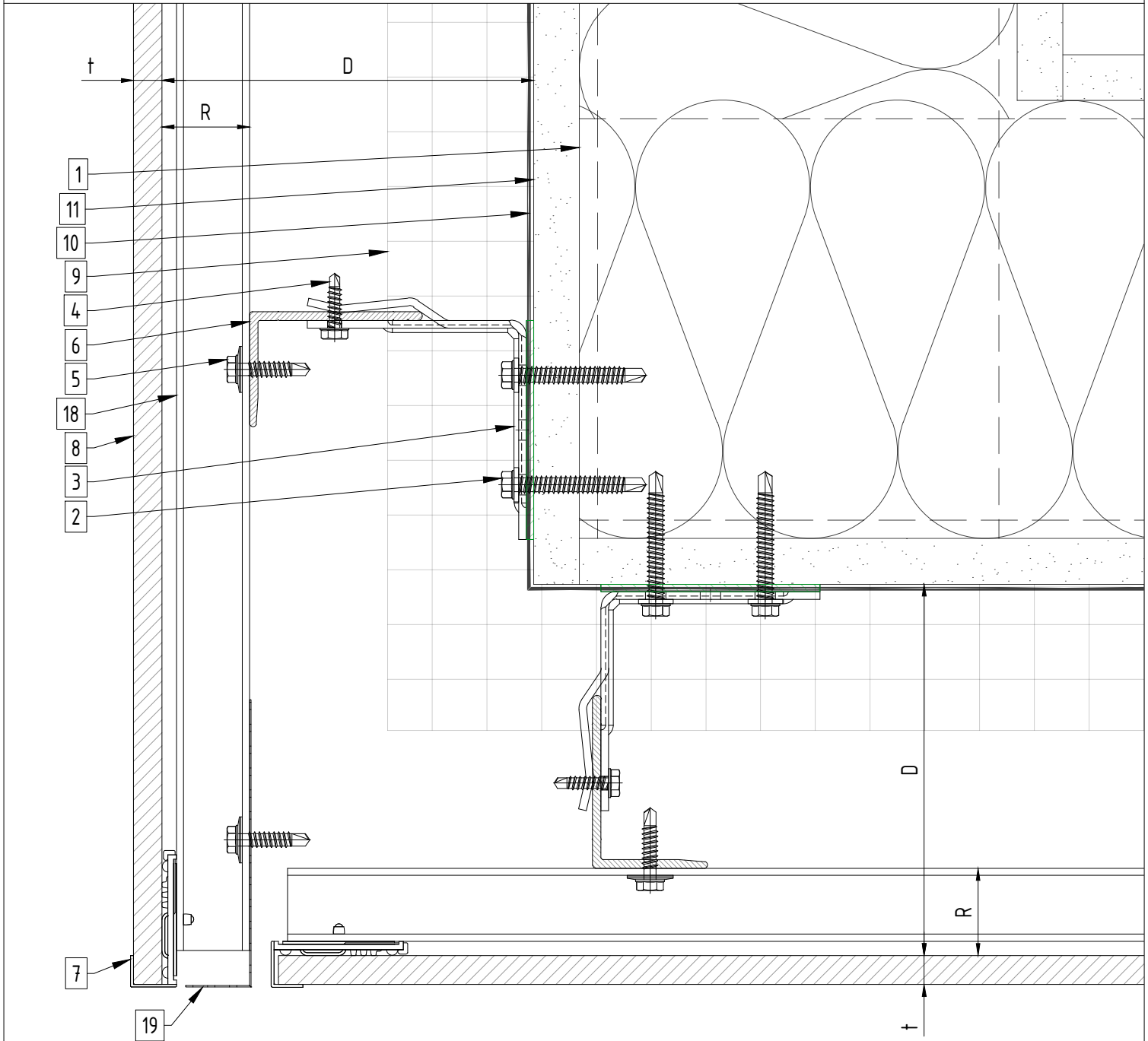
Legend

- 1. Steel stud (16 GA typical) (NBEC)
- 2. Perimeter anchor (NBEC)
- 3. Sigma wall bracket
- 4. st/st self-drilling screw $\frac{3}{16} \times \frac{3}{4}$ "
- 5. st/st self-drilling screw $\frac{1}{4} \times 1$ "
- 6. Horizontal L-profile
- 7. Ceramic tile clip
- 8. Ceramic tile
- 9. Insulation (NBEC)
- 10. A/V barrier (NBEC)

- 11. Exterior wall (NBEC)
- 12. Jamb closure (NBEC)
- 13. Vertical L-profile
- 14. Coping (NBEC)
- 15. Perforated window head closure (NBEC)
- 16. Window sill (NBEC)
- 17. Perforated base closure (NBEC)
- 18. Vertical Z-profile
- 19. Perforated closure

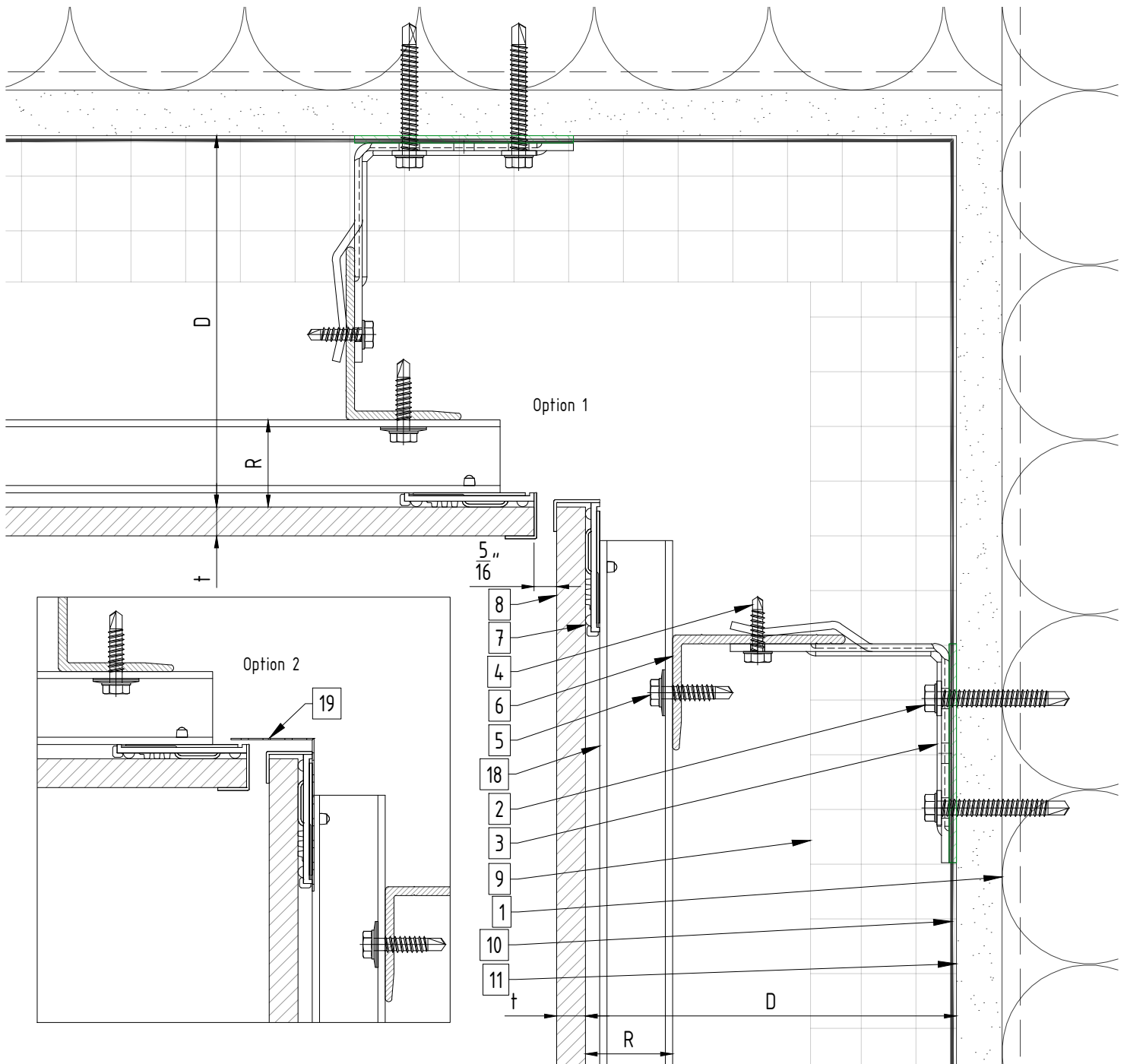
- D - System depth
- t - Panel thickness
- R - Ceramic tile clip and Z-profile
- * Ventilation will vary based on insulation depth.
- * Minimum ventilation requirement should be qualified by panel manufacturer.
- * System may be installed over steel studs, wood studs, CMU or concrete substrates (with use of appropriate perimeter anchors).
- * NBEC - Not by EcoCladding.

Soffit detail



Legend		
1. Steel stud (16 GA typical) (NBEC)	11. Exterior wall (NBEC)	D - System depth t - Panel thickness R - Ceramic tile clip and Z-profile * Ventilation will vary based on insulation depth. * Minimum ventilation requirement should be qualified by panel manufacturer. * System may be installed over steel studs, wood studs, CMU or concrete substrates (with use of appropriate perimeter anchors). * NBEC - Not by EcoCladding.
2. Perimeter anchor (NBEC)	12. Jamb closure (NBEC)	
3. Sigma wall bracket	13. Vertical L-profile	
4. st/st self-drilling screw $\frac{3}{16} \times \frac{3}{4}$ "	14. Coping (NBEC)	
5. st/st self-drilling screw $\frac{1}{4} \times 1$ "	15. Perforated window head closure (NBEC)	
6. Horizontal L-profile	16. Window sill (NBEC)	
7. Ceramic tile clip	17. Perforated base closure (NBEC)	
8. Ceramic tile	18. Vertical Z-profile	
9. Insulation (NBEC)	19. Perforated closure	
10. A/V barrier (NBEC)		

Soffit detail 2



Legend		
1. Steel stud (16 GA typical) (NBEC)	11. Exterior wall (NBEC)	D - System depth t - Panel thickness R - Ceramic tile clip and Z-profile * Ventilation will vary based on insulation depth. * Minimum ventilation requirement should be qualified by panel manufacturer. * System may be installed over steel studs, wood studs, CMU or concrete substrates (with use of appropriate perimeter anchors). * NBEC - Not by EcoCladding.
2. Perimeter anchor (NBEC)	12. Jamb closure (NBEC)	
3. Sigma wall bracket	13. Vertical L-profile	
4. st/st self-drilling screw $\frac{3}{16} \times \frac{3}{4}$ "	14. Coping (NBEC)	
5. st/st self-drilling screw $\frac{1}{4} \times 1$ "	15. Perforated window head closure (NBEC)	
6. Horizontal L-profile	16. Window sill (NBEC)	
7. Ceramic tile clip	17. Perforated base closure (NBEC)	
8. Ceramic tile	18. Vertical Z-profile	
9. Insulation (NBEC)	19. Perforated closure	
10. A/V barrier (NBEC)		