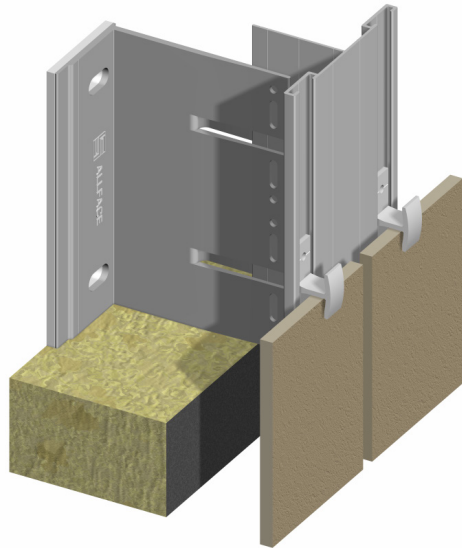


F1.20 Visible Clip



Attachment method with visible clips. Cost-effective visible clip attachment system used for anchoring ceramic or natural stone panels for cladding applications. Clips are color matched to the panels and are discreet, especially for multiple story construction. For use with either stud or concrete back-up conditions.

ADVANTAGES



Shim Free System



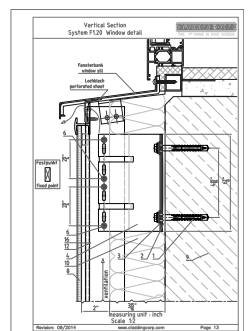
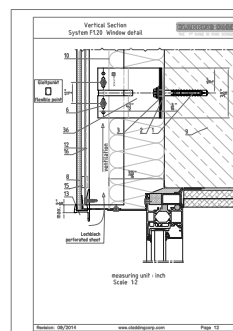
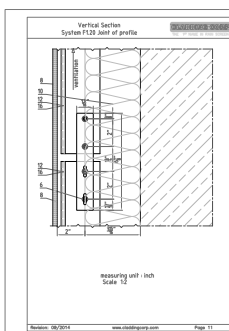
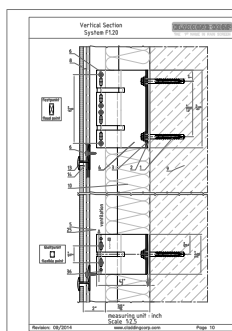
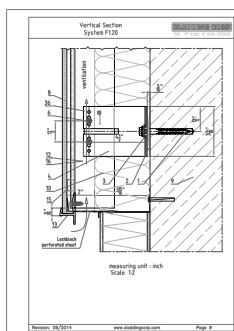
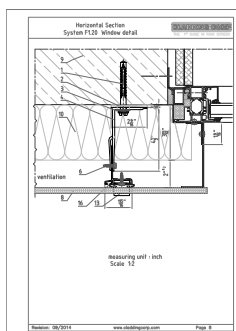
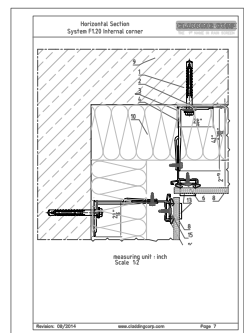
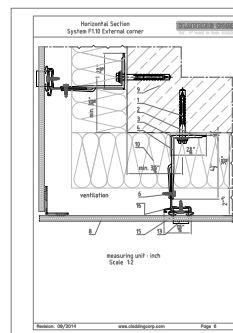
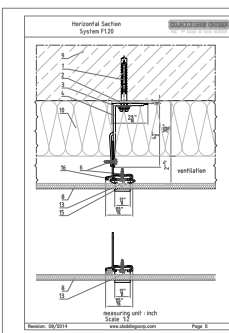
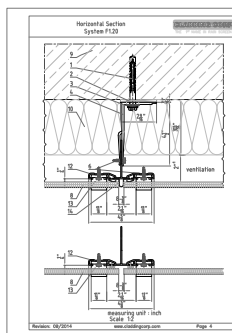
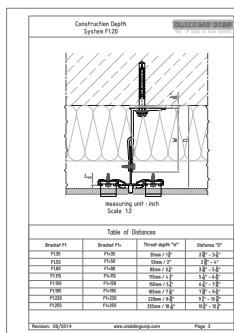
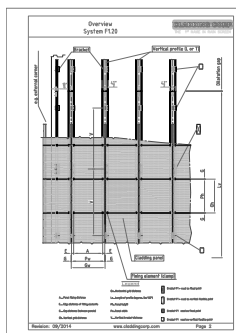
ASHRAE Compliant Wall



Continuous Insulation



Architectural Aluminum Grade



CLADDING CORP

THE 1ST NAME IN RAINSCREEN

888.826.8453

info@claddingcorp.com
www.claddingcorp.com

Details available in CAD or PDF version
at <http://claddingcorp.com/downloads>