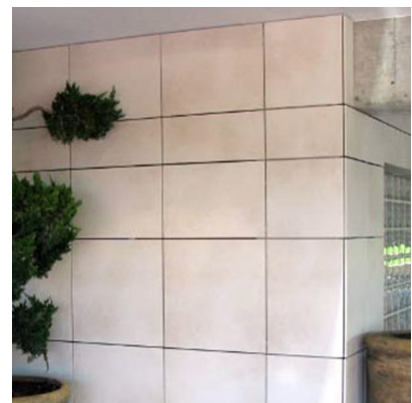


CERAMIC RAINSCREEN

Southeast Missouri Hospital

Cape Girardeau, MO



Ceramic5 porcelain stone panels with concealed F1.40 attachment were selected for the feature cladding on this hospital's parking garage entrance.

System Type: F1.40
Panel Type: Ceramic5
Architect: Pansing Nolan Architects
Installer: Drury Company
Completed: 2008

888.826.8453

www.claddingcorp.com

CLADDING CORP

THE 1ST NAME IN RAINSCREEN

