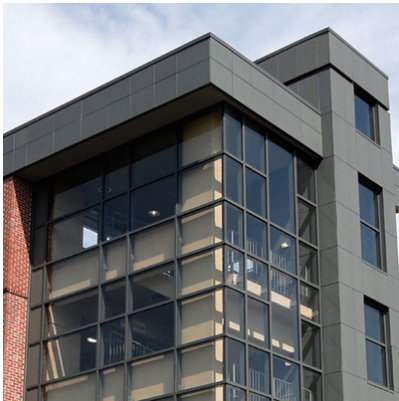


CERAMIC RAINSCREEN

Purdue Parking Garage

West Lafayette, IN



Ceramic5 porcelain panels with a concealed F1.40 fastening system were selected as the featured cladding on this addition to an existing parking garage at Purdue University.

System Type: F1.40
Panel Type: Ceramic5
Architect: Ratio / Moody Nolan
Installer: Spohn Associates
Completed: 2007

888.826.8453

www.claddingcorp.com

CLADDING CORP

THE 1ST NAME IN RAINSCREEN

